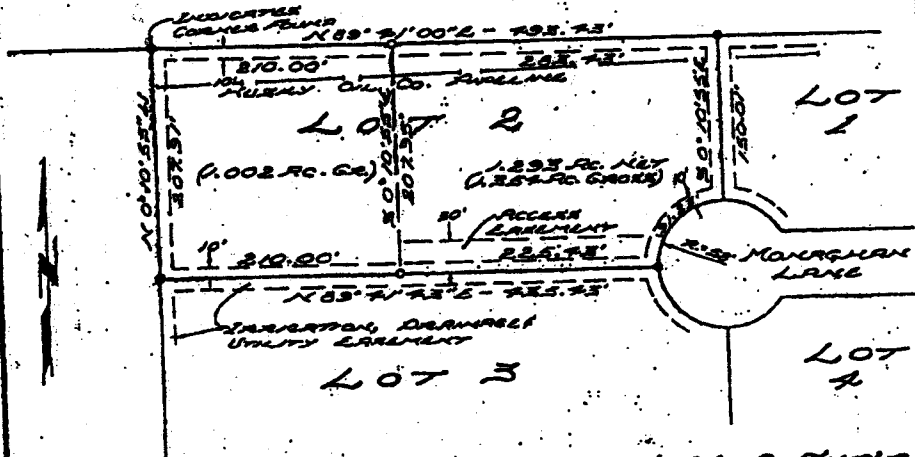




117 883

SEVEN MOUNTAIN SUB'D.



CANYON ORK RANCHETTES NO. 2 SUB'D.

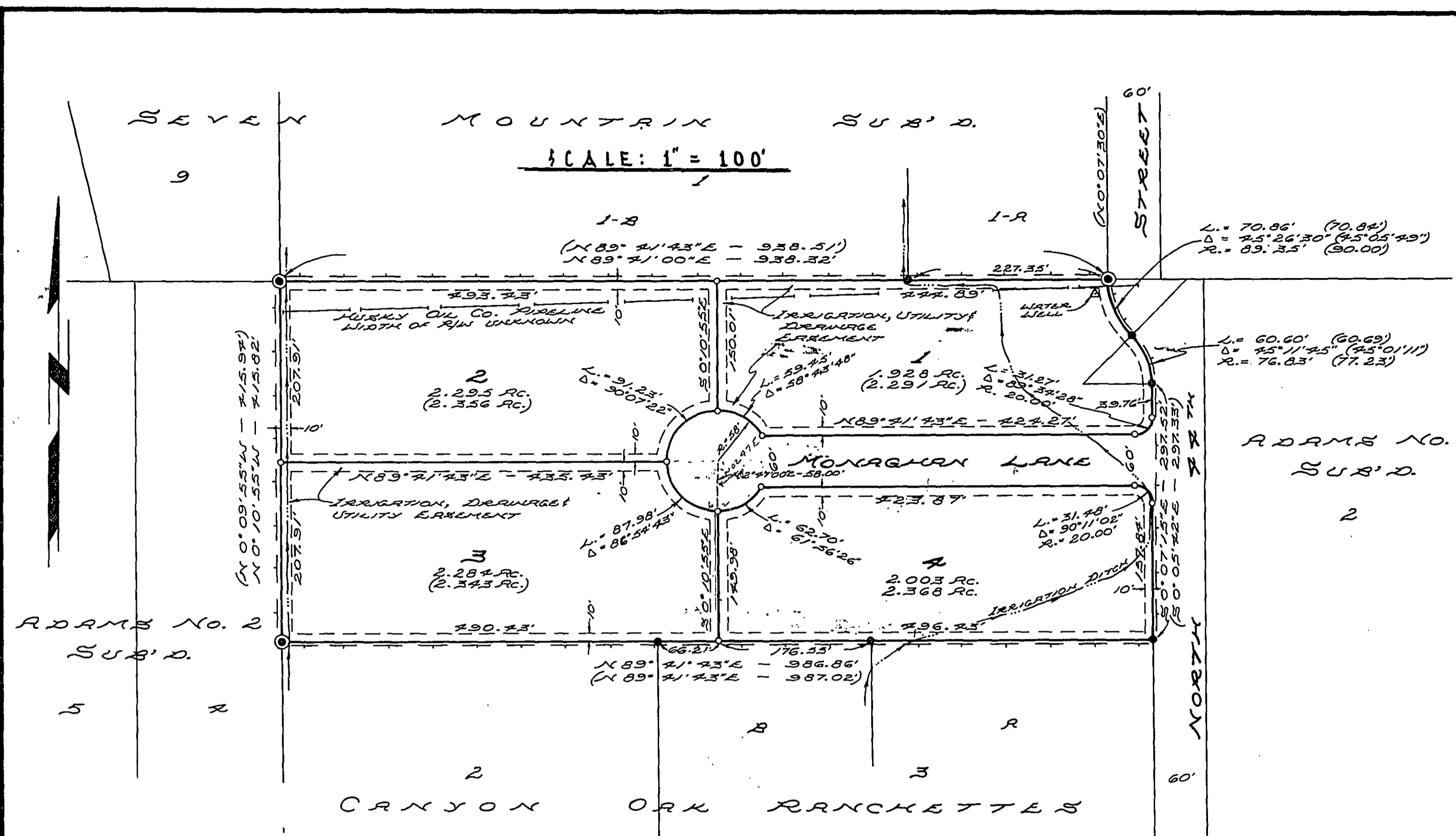
SCALE: 1" = 100'

EXHIBIT A

TOM QUICK  
 CADY, ARCHITECT  
 PLAT ENGINEER  
 DIVISION OF LOT 2  
 CANYON ORK RANCHETTES NO. 2 SUB'D.  
 PARK COUNTY, COLORADO  
 HENRY, BURDEN & CO. CONSULTING ENGINEERS  
 CADY, ARCHITECT  
 JULY 1968

BOOK 175  
PAGE 55-171





**CERTIFICATE OF SURVEYOR**

I, PAUL A. BLOUGH, A LAND SURVEYOR, REGISTERED IN THE STATE OF WYOMING BY REGISTRATION NUMBER 2132 L.I. HEREBY CERTIFY THAT ON THE 24<sup>th</sup> DAY OF JULY, 1985 THE AMENDED CANYON OAK RANCHETTES NO. 2 SUBDIVISION AROUND HEREON WAS SURVEYED BY ME, AND CERTIFY THAT THE LAND SURVEYED IS CORRECTLY INCLUDED IN THE ORIGINAL OWNERS CERTIFICATE OF DEDICATION AND THAT THE ADJUSTMENT TO THE ORIGINAL SUBDIVISION THEREOF IS CORRECTLY SHOWN ON THIS PLAT, AND WAS MADE FROM AN ACCURATE SURVEY OF SAID PROPERTY BY ME OR UNDER MY SUPERVISION, CORRECTLY SHOWING THE LOCATION AND DIMENSIONS OF THE ADDITIONS TO LOT 1 AND LOT 4 OF SAID SUBDIVISION IN COMPLIANCE WITH THE PARK COUNTY SUBDIVISION REGULATIONS, AND LOT OR OBLITERATED GOVERNMENT LAND CORNER MONUMENTS WERE RESTORED AS REQUIRED, AND THE REQUIREMENTS OF W.S. 36-11-10 THROUGH 36-11-11 WERE COMPLIED WITH, AND THAT MONUMENTS AND LOT CORNERS MAKING THIS SURVEY WERE ACTUALLY SET AND THE MONUMENTS WERE AS DESCRIBED HEREON, AND THAT ALL ELEMENTS OF THE SURVEY CLOSE TO AN ACCURACY OF ONE PART IN FIVE THOUSAND OR BETTER.

IN WITNESS WHEREOF I HAVE SET MY HAND AND SEAL THIS 18<sup>th</sup> DAY OF AUGUST 1985 A.D.

Paul A. Blough  
PAUL A. BLOUGH  
L.I. 2132

STATE OF WYOMING }  
COUNTY OF PARK } ss  
THE FOREGOING CERTIFICATE WAS ACKNOWLEDGED BEFORE ME BY PAUL A. BLOUGH THIS 18<sup>th</sup> DAY OF AUGUST 1985 A.D.

WITNESS MY HAND AND OFFICIAL SEAL

Mary C. Oney  
NOTARY PUBLIC  
Sept. 26, 1988

MY COMMISSION EXPIRES: \_\_\_\_\_

**LEGEND**

TOTAL NUMBER OF LOTS WITHIN THIS SUB'D.	7
TOTAL ACREAGE WITHIN THIS SUB'D.	9.358 AC.
BEARS CAP FOUND IN PLACE	0
BEARS W/ALUM. CAP FOUND IN PLACE	0
16" X 18" BEARS W/ALUM. CAP SET	0
NET LOT ACREAGE	1.928 AC.
GROSS LOT ACREAGE	(2.231 AC.)
DIMENSIONS OF RECORD	(939.5')
MEASUREMENTS OBTAINED THIS SURVEY	939.32'
BOUNDARY OF "CANYON OAK RANCHETTES NO. 2"	
IRRIGATION DITCH	

**CERTIFICATE OF SURVEYOR**

I, PAUL A. BLOUGH, A LAND SURVEYOR, REGISTERED IN THE STATE OF WYOMING BY REGISTRATION NUMBER 2132 L.I. HEREBY CERTIFY THAT ON THE 24<sup>th</sup> DAY OF JULY, 1985 THE AMENDED CANYON OAK RANCHETTES NO. 2 SUBDIVISION AROUND HEREON WAS SURVEYED BY ME, AND CERTIFY THAT THE LAND SURVEYED IS CORRECTLY INCLUDED IN THE ORIGINAL OWNERS CERTIFICATE OF DEDICATION AND THAT THE ADJUSTMENT TO THE ORIGINAL SUBDIVISION THEREOF IS CORRECTLY SHOWN ON THIS PLAT, AND WAS MADE FROM AN ACCURATE SURVEY OF SAID PROPERTY BY ME OR UNDER MY SUPERVISION, CORRECTLY SHOWING THE LOCATION AND DIMENSIONS OF THE ADDITIONS TO LOT 1 AND LOT 4 OF SAID SUBDIVISION IN COMPLIANCE WITH THE PARK COUNTY SUBDIVISION REGULATIONS, AND LOT OR OBLITERATED GOVERNMENT LAND CORNER MONUMENTS WERE RESTORED AS REQUIRED, AND THE REQUIREMENTS OF W.S. 36-11-10 THROUGH 36-11-11 WERE COMPLIED WITH, AND THAT MONUMENTS AND LOT CORNERS MAKING THIS SURVEY WERE ACTUALLY SET AND THE MONUMENTS WERE AS DESCRIBED HEREON, AND THAT ALL ELEMENTS OF THE SURVEY CLOSE TO AN ACCURACY OF ONE PART IN FIVE THOUSAND OR BETTER.

IN WITNESS WHEREOF I HAVE SET MY HAND AND SEAL THIS 1<sup>st</sup> DAY OF OCTOBER, 1985 A.D.

Paul A. Blough  
PAUL A. BLOUGH  
2132 L.I.

STATE OF WYOMING }  
COUNTY OF PARK } ss  
THE FOREGOING CERTIFICATE WAS ACKNOWLEDGED BEFORE ME BY PAUL A. BLOUGH THIS 1<sup>st</sup> DAY OF OCTOBER, 1985 A.D.

WITNESS MY HAND AND OFFICIAL SEAL.

Mary C. Oney  
NOTARY PUBLIC  
Sept. 26, 1988

MY COMMISSION EXPIRES: \_\_\_\_\_

**CERTIFICATE OF DEDICATION**

THE UNDERSIGNED, DO HEREBY CERTIFY THAT THE ARE SHOWN ON THIS PLAT ARE THE REAL PROPERTY DESCRIBED AS FOLLOWS:

A TRACT OF LAND CONSISTING OF A PORTION OF THE NORTH 1/4 OF SECTION 26, T.53 N., R.101 W., PARK COUNTY, WYOMING, BEING MORE PARTICULARLY DESCRIBED AS FOLLOWS:

BEGINNING AT THE NW CORNER OF SAID LOT 3, SAID CORNER BEING AN EXISTING BARRA CRUIZ FENCE NORTH 89° 21' 43.5" EAST FOR A DISTANCE OF 338.51 FEET TO THE NE CORNER OF SAID TRACT; SAID CORNER BEING ON A 63.66' BEARING CURVE; THENCE SOUTH 74° 03' 25" WEST FOR A DISTANCE OF 70.87 FEET TO A POINT; THENCE SOUTHERLY AND EAST SOUTHERLY TO THE SE CORNER OF SAID TRACT; THENCE SOUTH 89° 21' 43.5" WEST FOR A DISTANCE OF 337.02 FEET TO THE NE CORNER OF SAID TRACT; THENCE NORTH 00° 03' 55" WEST FOR A DISTANCE OF 315.94 FEET TO THE POINT OF BEGINNING.

BEARING BEING NORTH 00° 03' 55" EAST BETWEEN THE NE CORNER OF TRACT 38 AND CORNER NO. 2, BEARING T.53 N., R.101 W., 6<sup>th</sup> 2<sup>d</sup> Q.M., PARK COUNTY, WYOMING.

AND CONTAINING 9.358 TOTAL ACRES OF LAND 6.510 ACRES BEING IN PARCELS, TRACTS, OR LOTS AND APPROXIMATELY 0.898 ACRES ARE IN PUBLIC OR PRIVATE STREET RIGHT-OF-WAY, EASEMENTS AND RITES; AND HAVE LAID OUT, PLATTED AND SUBDIVIDED INTO LOTS AND BLOCKS THE CANYON OAK RANCHETTES NO. 2 SUBDIVISION, IN THE COUNTY OF PARK, WYOMING, WITH THE RESERVE OF THE UNDERSIGNED OWNERS; AND DO HEREBY GRANT TO THE PUBLIC COUNTY, WYOMING, AND THE PUBLIC OF THE COUNTY OF PARK, WYOMING, AND THE PUBLIC LANDS AGENCY, AND OTHER AGENTS AND OFFICERS OF SAID COUNTY AND OTHER AGENCIES SO NOTED HEREON AND DO HEREBY STATE THAT I HEREBY RELEASE AND RELINQUISH ALL MY RIGHTS AND INTERESTS IN SAID TRACT AND SUBDIVISION TO THE COUNTY OF PARK AND RECORD FOR THE COUNTY OF PARK, WYOMING, THE OFFICE OF THE CLERK OF PARK COUNTY, WYOMING.

EXECUTED THIS 1<sup>st</sup> DAY OF OCTOBER, 1985 A.D.

Tom Quick  
TOM QUICK

Ricky Quick  
RICKY QUICK

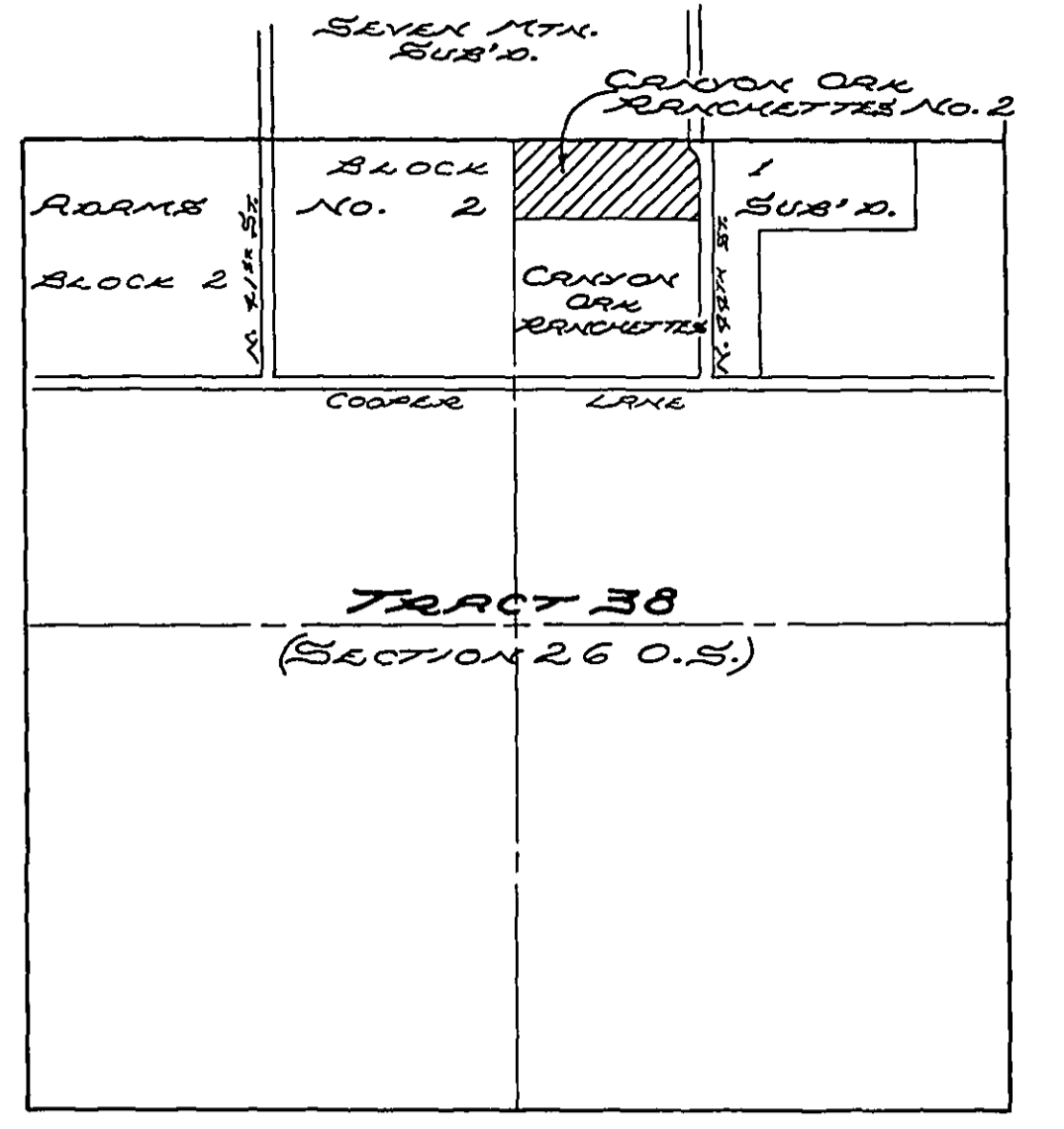
STATE OF WYOMING }  
COUNTY OF PARK } ss  
THE FOREGOING DEDICATION WAS ACKNOWLEDGED BEFORE ME BY TOM QUICK AND RICKY QUICK AND SAID LIVES) THIS 1<sup>st</sup> DAY OF OCTOBER, 1985 A.D.

WITNESS MY HAND AND OFFICIAL SEAL.

Mary C. Oney  
NOTARY PUBLIC  
Sept. 26, 1988

MY COMMISSION EXPIRES: Sept. 26, 1988

T. 53 N., R. 101 W.  
(REBURY)  
SEVEN 1/4<sup>th</sup> SUB'D.



**COUNTY COMMISSIONERS CERTIFICATE & SUBDIVISION PERMIT**

THIS AMENDED PLAT IS HEREBY APPROVED AND A SUBDIVISION PERMIT ISSUED BY THE BOARD OF COUNTY COMMISSIONERS OF PARK COUNTY, WYOMING, THIS 29<sup>th</sup> DAY OF OCTOBER, 1985 A.D. FOR FILING AND RECORDING WITH THE CLERK OF PARK COUNTY, WYOMING, SUBJECT TO THE PROVISION THAT SUCH APPROVAL IN NO WAY OBLIGATES THE COUNTY OF PARK FOR THE FINANCING, CONSTRUCTION, OR MAINTENANCE OF ANY ROADS, OR OTHER IMPROVEMENT OR FACILITY WITHIN OR TO BE MADE A PART OF "CANYON OAK RANCHETTES NO. 2" SUBDIVISION, DATED THIS 29<sup>th</sup> DAY OF OCTOBER, 1985 A.D.

M. J. Soren  
CHAIRMAN: PARK COUNTY COMMISSIONERS

WITNESS MY HAND AND OFFICIAL SEAL OF THE COUNTY OF PARK THIS 29<sup>th</sup> DAY OF OCTOBER, 1985 A.D.

ATTEST: M. Marie Fontaine  
PARK COUNTY CLERK

**COUNTY CLERK'S CERTIFICATE**

THIS PLAT WAS FILED FOR THE PUBLIC RECORD IN THE OFFICE OF THE CLERK, PARK COUNTY, WYOMING, AT 10:00 O'CLOCK P.M. ON THE 29<sup>th</sup> DAY OF OCTOBER, 1985 A.D. AND IS FULLY RECORDED IN BOOK F, PAGE NUMBER 21.

RECEPTION No. 225232

Marie Fontaine  
PARK COUNTY CLERK

BY: William Gates  
DEPUTY

**COUNTY COMMISSIONERS CERTIFICATE AND SUBDIVISION PERMIT**

THIS PLAT IS HEREBY APPROVED AND SUBDIVISION PERMIT ISSUED BY THE BOARD OF COUNTY COMMISSIONERS OF PARK COUNTY, WYOMING, THIS 29<sup>th</sup> DAY OF OCTOBER, 1985 A.D. FOR FILING AND RECORDING WITH THE CLERK OF PARK COUNTY, WYOMING, AND FOR THE CONVEYANCE OF THE COUNTY OF PARK THE PUBLIC LANDS AGENCY, SUBJECT TO THE PROVISION THAT SUCH APPROVAL IN NO WAY OBLIGATES THE COUNTY OF PARK FOR THE FINANCING, CONSTRUCTION, OR MAINTENANCE OF ANY ROADS, OR OTHER IMPROVEMENT OR FACILITY WITHIN OR TO BE MADE A PART OF "CANYON OAK RANCHETTES NO. 2" SUBDIVISION, DATED THIS 29<sup>th</sup> DAY OF OCTOBER, 1985 A.D.

Frank Banning  
PARK COUNTY COMMISSIONERS

WITNESS MY HAND AND OFFICIAL SEAL OF THE COUNTY OF PARK THIS 29<sup>th</sup> DAY OF OCTOBER, 1985 A.D.

ATTEST: M. Marie Fontaine  
PARK COUNTY CLERK

**PLANNING AND ZONING COMMISSION CERTIFICATE**

THIS PLAT IS RECOMMENDED FOR APPROVAL BY THE BOARD OF COUNTY COMMISSIONERS, PARK COUNTY, WYOMING, ON THIS 16<sup>th</sup> DAY OF OCTOBER, 1985 A.D.

John L. Hancock  
CHAIRMAN

ATTEST: Janet Hadden  
SECRETARY

15<sup>th</sup> November 85 10140  
A F  
Noelce Woodfield  
218732

**AMENDED PLAT SHOWING CANYON OAK RANCHETTES NO. 2 BEING PART OF LOT 3, BLOCK 1 OF RDMS NO. 2 SUBDIVISION IN TRACT 38, T.53 N., R.101 W., 6<sup>th</sup> 2<sup>d</sup> Q.M. (REBURY) PARK COUNTY, WYOMING**

PAUL A. BLOUGH & CO. ENGINEERS & SURVEYORS  
CODY, WYOMING

FORM NO. 84-163 BOOK NO. 163

**NO PUBLIC OR CENTRAL SEWAGE DISPOSAL SYSTEM PROPOSED**