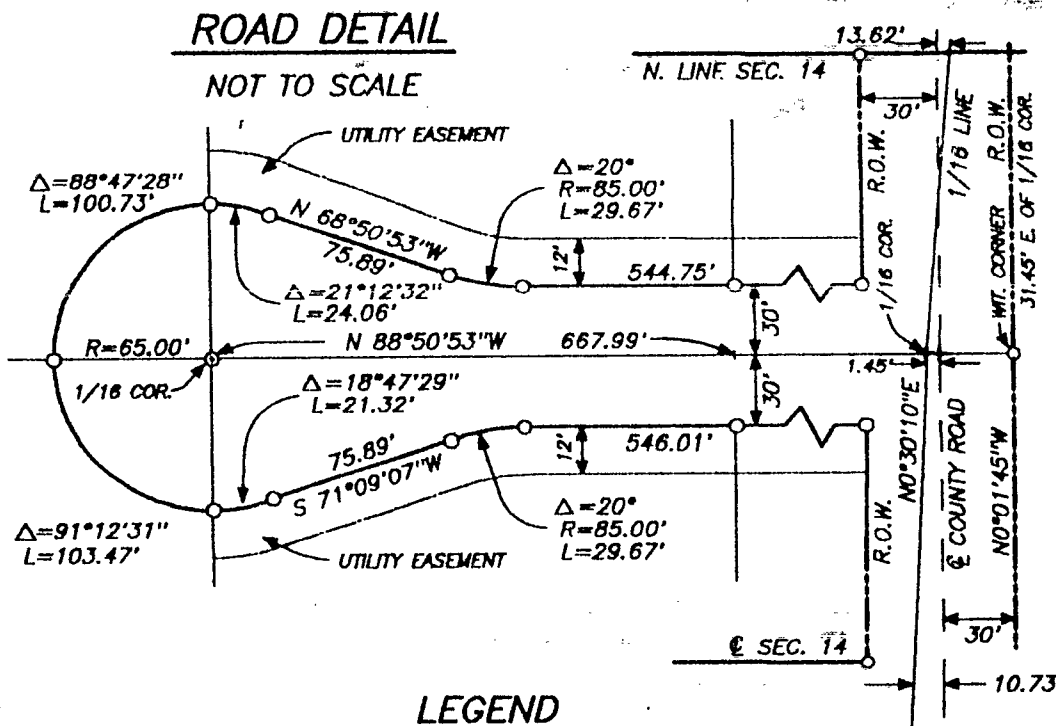


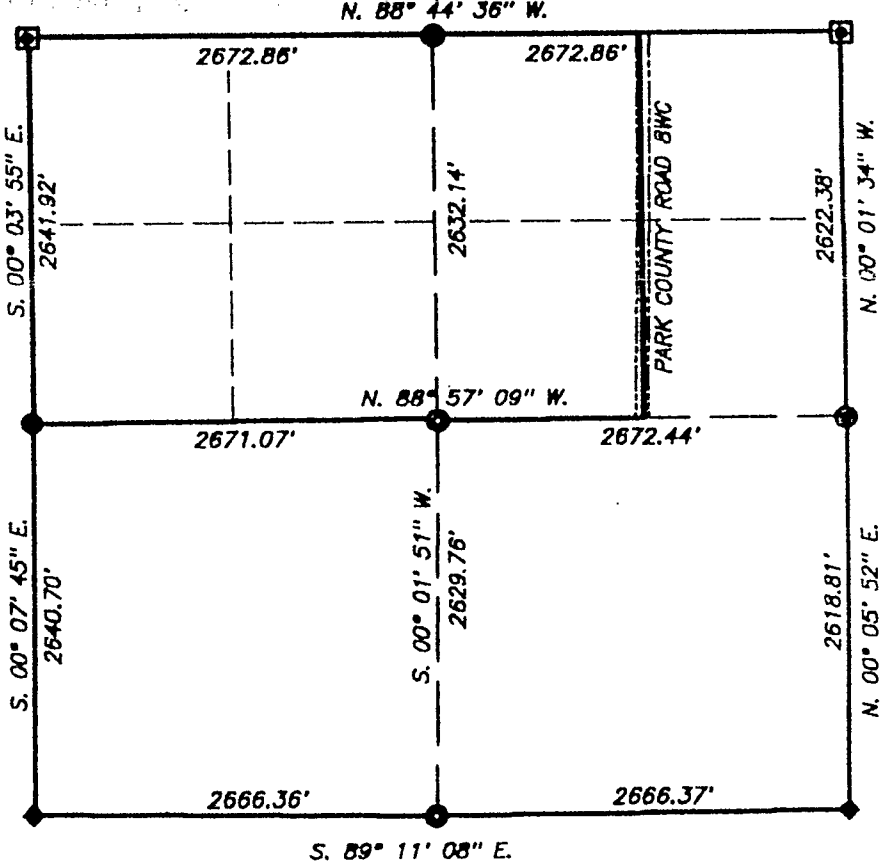
DETAIL MAP
SCALE: 1" = 600'

* CANYON PARK ADDITION



LEGEND

- - 2-1/2" X 30" ALUMINUM PIPE W/CAP SET
- - 2-1/2" X 30" ALUMINUM PIPE W/CAP FOUND
- - 5/8" REBAR W/ALUMINUM CAP FOUND
- ◆ - STONE MONUMENT FOUND
- - 5/8" X 30" REBAR W/ALUMINUM CAP SET
- - 2-1/2" IRON PIPE W/BRASS CAP FOUND



LOCATION MAP
NOT TO SCALE

CERTIFICATE OF SURVEYOR

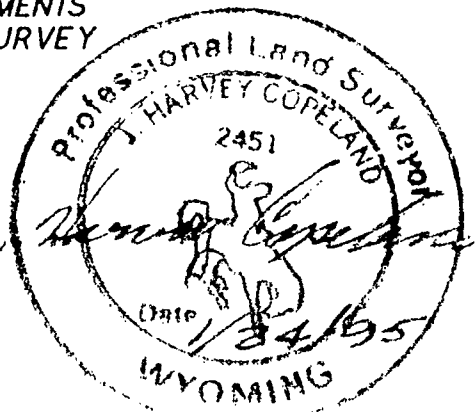
STATE OF WYOMING }
COUNTY OF PARK } S.S.

I, J. HARVEY COPELAND, OF CODY, WYOMING, HEREBY CERTIFY THAT THIS PLAT WAS PREPARED FROM NOTES TAKEN DURING AN ACTUAL SURVEY MADE BY ME AND THAT SAID SURVEY IS ACCURATELY REPRESENTED ON THIS PLAT, AND ALL MONUMENTS FOUND AND SET ARE AS INDICATED. SAID SURVEY WAS PERFORMED 12 JANUARY 1995.

RECORD OF SURVEY PLAT

SUBMISSION OF
SECTION 14
T. 57 N., R. 102 W. 6TH P.M.
PARK COUNTY, WYOMING

State of Wyoming } SS
County of Park }
This instrument was filed for record on this 24 day of January 19 95 at 2:05 o'clock P m. and duly recorded in Microfilm book _____ records on page _____
MARIE FONTAINE, Register of Deeds
By MARY LOU LIVESAY, Deputy



PREPARED BY:
COPELAND SURVEYING
CODY, WYOMING
94-01-044
23 JANUARY 1995