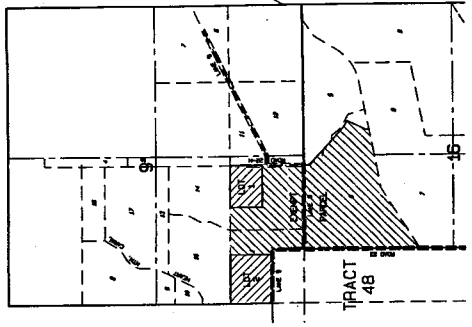


T. 55 N., R. 101 W.
(RESURVEY)

NO PUBLIC SEWAGE DISPOSAL SYSTEM PROPOSED.
NO PROPOSED PUBLIC DOMESTIC WATER SOURCE.
THERE ARE NO ROADS PROPOSED AS A PART OF THIS SUBDIVISION.

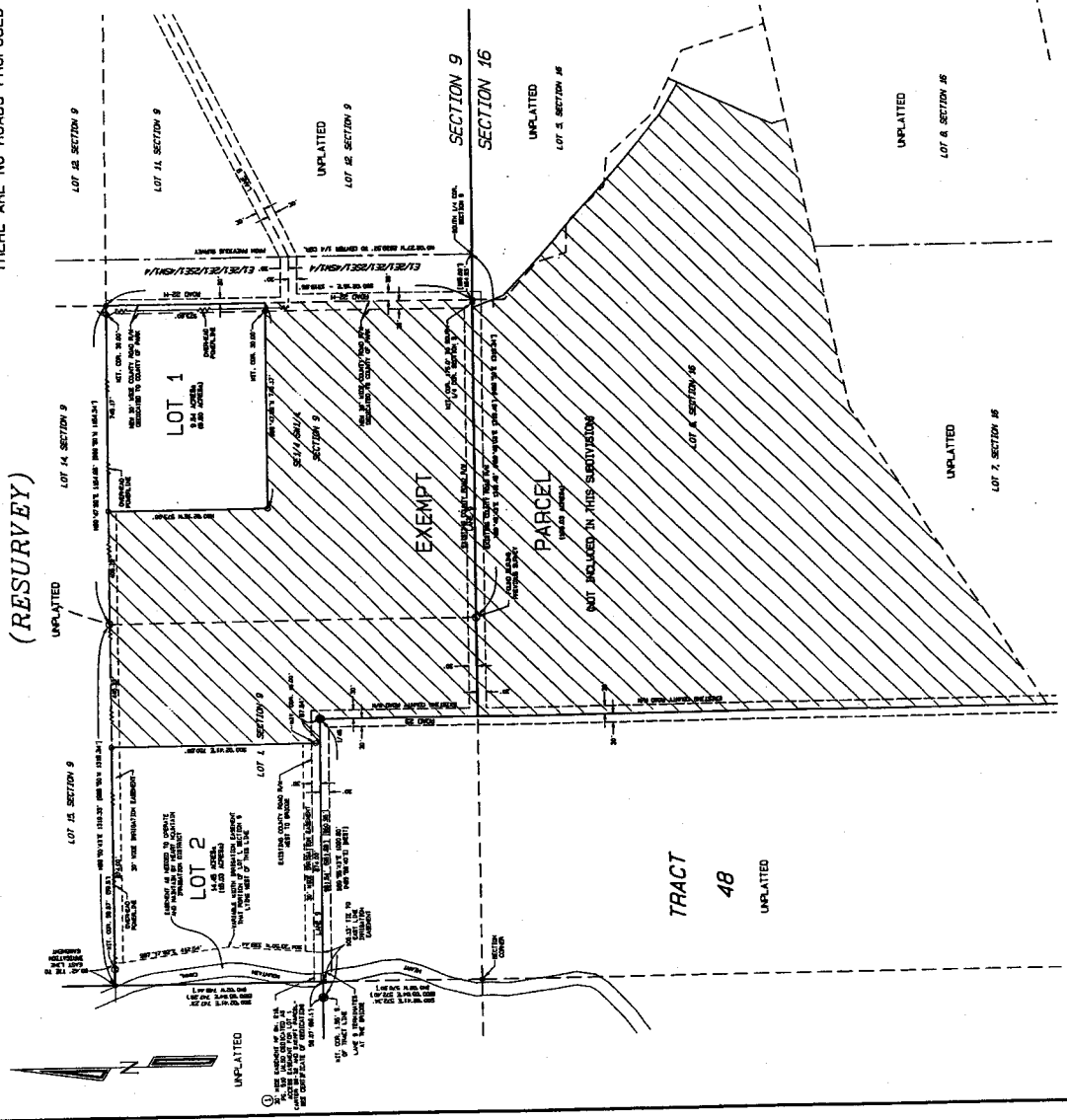
T. 55 N., R. 101 W.
(RESURVEY)



VICINITY MAP
SCALE 1" = 500'

① THIS AREA HAS BEEN RECONSIDERED FOR RECONSTRUCTION BY THE STATE OF WYOMING. RECONSTRUCTION WILL BE COMPLETED BY THE STATE OF WYOMING.

- LEGEND
- 1/4 SECTION 9
 - 1/4 SECTION 16
 - 1/4 SECTION 36
 - 1/4 SECTION 48
 - 1/4 SECTION 9
 - 1/4 SECTION 16
 - 1/4 SECTION 36
 - 1/4 SECTION 48
 - 1/4 SECTION 9
 - 1/4 SECTION 16
 - 1/4 SECTION 36
 - 1/4 SECTION 48
 - 1/4 SECTION 9
 - 1/4 SECTION 16
 - 1/4 SECTION 36
 - 1/4 SECTION 48



JON CARTER
POWELL, WYOMING
-PLAT SHOWING-
CARTER SS-32
WITHIN
LOT 1 AND THE SE1/4SW1/4 OF SECTION 9
T. 55 N., R. 101 W., 6th P.M.
(RESURVEY) PARK COUNTY, WYOMING

WYOMING REGISTERED PROFESSIONAL SURVEYOR
NO. 12345
JANUARY 1, 2004

