

1/4" SCALE MAP INSTRUMENT FROM PLAT SHOWING THIS
 1/4" SCALE MAP INSTRUMENT SET SHOWING THIS
 1/4" SCALE MAP INSTRUMENT FROM TYPE SET SHOWING THIS
 BOUNDARY OF SURVEYING INSTRUMENT THIS
 ACCESSIBLE TO EACH LOT UNDER THIS 5.00 ACRES

STATE OF VT.)
COUNTY OF PLAZA) ss.

I, WALTER W. REED, of said Vermont, hereby certify that between May 15, 1973 and February 10, 1974, the above plat was duly filed in the office of the Register of Deeds for the County of Plazas, Vermont, and that the same is correctly drawn and the plat was duly filed in the office of the Register of Deeds for the County of Plazas, Vermont, and that the same is a true and correct copy of the original plat as the same appears on file in the office of the Register of Deeds for the County of Plazas, Vermont, and that the same is a true and correct copy of the original plat as the same appears on file in the office of the Register of Deeds for the County of Plazas, Vermont, and that the same is a true and correct copy of the original plat as the same appears on file in the office of the Register of Deeds for the County of Plazas, Vermont.

WALTER W. REED
 REGISTER OF DEEDS
 VERMONT DEPARTMENT OF STATE, LAND & FORESTRY

APPROVED THIS 5 DAY OF JANUARY, 1974, OF THE SUPERVISORS OF PLAZA COUNTY, VERMONT, SUBJECT TO THE PROVISIONS OF SECTION 10 OF THE PLAZA COUNTY CHARTER AND THE APPROVAL OF THE SUPERVISORS OF PLAZA COUNTY, VERMONT.

JAMES E. BLACKBURN
 CHAIRMAN OF SUPERVISORS
 JOHN E. LEASON
 COUNTY CLERK

STATE OF VT.)
 COUNTY OF PLAZA) ss.
 WE, THE UNDERSIGNED, do hereby certify that we are the owners of lots 1, 2, 3, 4, 5, 6, 7, 8, 9, 10, 11, 12, 13, 14 and 15 of the above plat, and that the same are correctly drawn and the plat was duly filed in the office of the Register of Deeds for the County of Plazas, Vermont, and that the same is a true and correct copy of the original plat as the same appears on file in the office of the Register of Deeds for the County of Plazas, Vermont, and that the same is a true and correct copy of the original plat as the same appears on file in the office of the Register of Deeds for the County of Plazas, Vermont, and that the same is a true and correct copy of the original plat as the same appears on file in the office of the Register of Deeds for the County of Plazas, Vermont.

MICHAEL R. WOODS
 LISA E. WOODS
 EDWARD J. WOODS
 DONALD R. WOODS

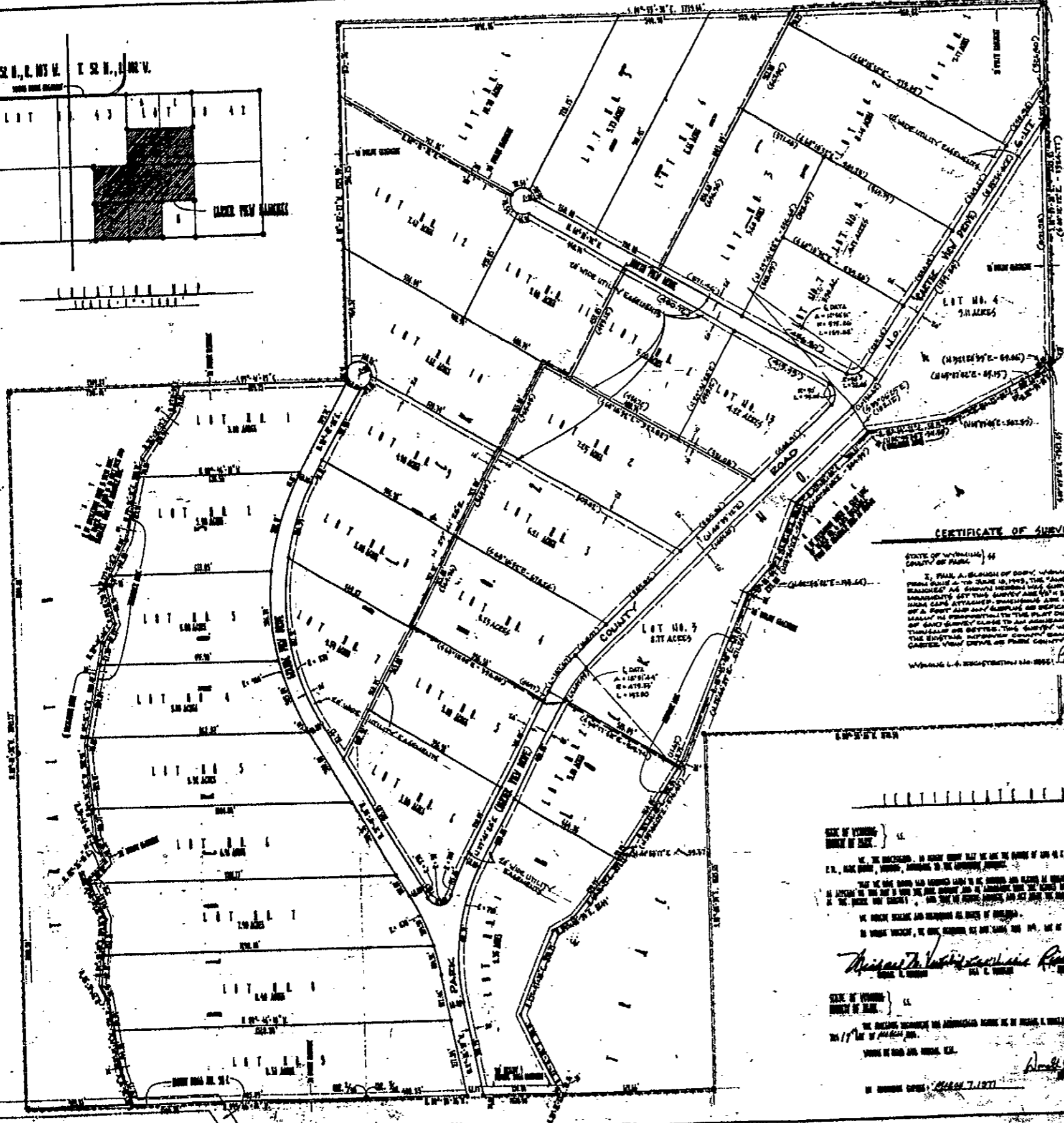
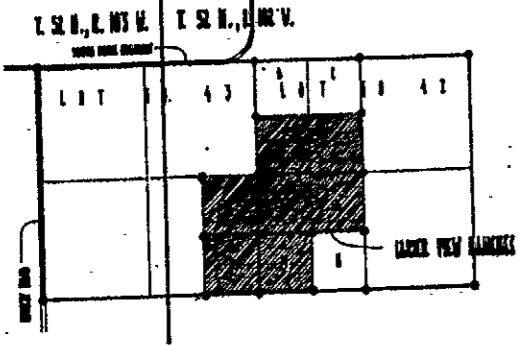
STATE OF VT.)
 COUNTY OF PLAZA) ss.
 WE, THE UNDERSIGNED, do hereby certify that we are the owners of lots 1, 2, 3, 4, 5, 6, 7, 8, 9, 10, 11, 12, 13, 14 and 15 of the above plat, and that the same are correctly drawn and the plat was duly filed in the office of the Register of Deeds for the County of Plazas, Vermont, and that the same is a true and correct copy of the original plat as the same appears on file in the office of the Register of Deeds for the County of Plazas, Vermont, and that the same is a true and correct copy of the original plat as the same appears on file in the office of the Register of Deeds for the County of Plazas, Vermont, and that the same is a true and correct copy of the original plat as the same appears on file in the office of the Register of Deeds for the County of Plazas, Vermont.

MICHIGAN T. WOODS
 JANUARY 7, 1974

74 3:45
 JAMES E. BLACKBURN
 JOHN E. LEASON
 EDWARD J. WOODS
 DONALD R. WOODS

FILED IN
CARTER VIEW RANCHES
 BOOKED IN
 LOT 42 & LOT 43 OF T. 52 N., R. 102 W.
 PLAZA COUNTY, VERMONT
 PREPARED BY
 ENGINEERING ASSOCIATES - CRAW, VYTIKING,
 ENGINEERING ARCHITECTS & LAND SURVEYORS





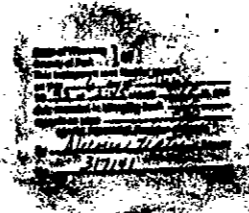
UTIL. VARIOUS UTILITY EASEMENTS WERE ADDED BY THIS AMENDMENT AS SHOWN UPON THIS PLAN.

- UTILITY EASEMENTS BY THIS PLAN INDICATED THAT:
 - 1. 12" WATER MAIN WITH ALUMINUM CAP SET TO 5 FEET
 - 2. 12" GAS MAIN WITH ALUMINUM CAP SET TO 5 FEET
 - 3. 12" SANITARY SEWER WITH ALUMINUM CAP SET TO 5 FEET
 - 4. 12" TELEPHONE WITH ALUMINUM CAP SET TO 5 FEET
 - 5. 12" CABLE TV WITH ALUMINUM CAP SET TO 5 FEET

THIS AMENDED PLAN IS HEREBY APPROVED AND A SUBDIVISION PERMITS IS ISSUED BY THE BOARD OF COUNTY COMMISSIONERS OF PARK COUNTY, WYOMING, SUBJECT TO THE PROVISIONS THAT SUCH APPROVAL IS CONDITIONAL UPON THE SUBMITTER'S COMPLETION OF ALL NECESSARY RECORDS AND PAYMENT OF ALL FEES AND CHARGES DUE TO THE COUNTY OF PARK FOR THE PREPARATION, REVISIONS AND REVISIONS OF ANY INSTRUMENTS AND THE SUBMITTER'S AGREEMENT TO THE PROVISIONS OF THE PLAT WHICH ARE TO BE MADE A PART OF THIS CARTER VIEW RANCHES SUBDIVISION.

DATED THIS 5th DAY OF JULY 1994 A.D.

WITNESS MY HAND AND OFFICIAL SEAL OF THE COUNTY OF PARK THIS 5th DAY OF JULY 1994.



STATE OF WYOMING }
 COUNTY OF PARK }
 I, JAMES E. CLARK, County Clerk of Park County, Wyoming, do hereby certify that the above and foregoing plat was filed for record in the office of the County Clerk of Park County, Wyoming, on the 5th day of July, 1994 A.D., and is duly recorded as Book 31744, Page 42.

CERTIFICATE OF SURVEYOR

STATE OF WYOMING }
 COUNTY OF PARK }
 I, PAUL A. BROWN, of Park County, Wyoming, being duly sworn, depose and say that I am a duly licensed and qualified surveyor in the State of Wyoming, and that I have personally surveyed and located the above and foregoing plat, and that the same is a true and correct representation of the actual survey made by me, and that I have not been furnished with any false or incorrect information by any person, and that I have not been influenced by any person in the making of this certificate, and that I have not been influenced by any person in the making of this certificate, and that I have not been influenced by any person in the making of this certificate.



THE FOREGOING CERTIFICATE WAS PREPARED BY ME ON THE 5th DAY OF JULY 1994 A.D. WITNESS MY HAND AND OFFICIAL SEAL.

PAUL A. BROWN
 SURVEYOR

MY COMMISSION EXPIRES: April 26, 1996

CERTIFICATE OF DEDICATION

WE, THE UNDERSIGNED OF PARK COUNTY, WYOMING, HEREBY CERTIFY THAT WE ARE THE OWNERS OF LOTS 1, 2, 3, 4, 5, 6, 7, 8, 9, 10, 11, 12, 13, 14, 15, 16, 17, 18, 19, 20, 21, 22, 23, 24, 25, 26, 27, 28, 29, 30, 31, 32, 33, 34, 35, 36, 37, 38, 39, 40, 41, 42, 43, 44, 45, 46, 47, 48, 49, 50, 51, 52, 53, 54, 55, 56, 57, 58, 59, 60, 61, 62, 63, 64, 65, 66, 67, 68, 69, 70, 71, 72, 73, 74, 75, 76, 77, 78, 79, 80, 81, 82, 83, 84, 85, 86, 87, 88, 89, 90, 91, 92, 93, 94, 95, 96, 97, 98, 99, 100, 101, 102, 103, 104, 105, 106, 107, 108, 109, 110, 111, 112, 113, 114, 115, 116, 117, 118, 119, 120, 121, 122, 123, 124, 125, 126, 127, 128, 129, 130, 131, 132, 133, 134, 135, 136, 137, 138, 139, 140, 141, 142, 143, 144, 145, 146, 147, 148, 149, 150, 151, 152, 153, 154, 155, 156, 157, 158, 159, 160, 161, 162, 163, 164, 165, 166, 167, 168, 169, 170, 171, 172, 173, 174, 175, 176, 177, 178, 179, 180, 181, 182, 183, 184, 185, 186, 187, 188, 189, 190, 191, 192, 193, 194, 195, 196, 197, 198, 199, 200, 201, 202, 203, 204, 205, 206, 207, 208, 209, 210, 211, 212, 213, 214, 215, 216, 217, 218, 219, 220, 221, 222, 223, 224, 225, 226, 227, 228, 229, 230, 231, 232, 233, 234, 235, 236, 237, 238, 239, 240, 241, 242, 243, 244, 245, 246, 247, 248, 249, 250, 251, 252, 253, 254, 255, 256, 257, 258, 259, 260, 261, 262, 263, 264, 265, 266, 267, 268, 269, 270, 271, 272, 273, 274, 275, 276, 277, 278, 279, 280, 281, 282, 283, 284, 285, 286, 287, 288, 289, 290, 291, 292, 293, 294, 295, 296, 297, 298, 299, 300, 301, 302, 303, 304, 305, 306, 307, 308, 309, 310, 311, 312, 313, 314, 315, 316, 317, 318, 319, 320, 321, 322, 323, 324, 325, 326, 327, 328, 329, 330, 331, 332, 333, 334, 335, 336, 337, 338, 339, 340, 341, 342, 343, 344, 345, 346, 347, 348, 349, 350, 351, 352, 353, 354, 355, 356, 357, 358, 359, 360, 361, 362, 363, 364, 365, 366, 367, 368, 369, 370, 371, 372, 373, 374, 375, 376, 377, 378, 379, 380, 381, 382, 383, 384, 385, 386, 387, 388, 389, 390, 391, 392, 393, 394, 395, 396, 397, 398, 399, 400, 401, 402, 403, 404, 405, 406, 407, 408, 409, 410, 411, 412, 413, 414, 415, 416, 417, 418, 419, 420, 421, 422, 423, 424, 425, 426, 427, 428, 429, 430, 431, 432, 433, 434, 435, 436, 437, 438, 439, 440, 441, 442, 443, 444, 445, 446, 447, 448, 449, 450, 451, 452, 453, 454, 455, 456, 457, 458, 459, 460, 461, 462, 463, 464, 465, 466, 467, 468, 469, 470, 471, 472, 473, 474, 475, 476, 477, 478, 479, 480, 481, 482, 483, 484, 485, 486, 487, 488, 489, 490, 491, 492, 493, 494, 495, 496, 497, 498, 499, 500, 501, 502, 503, 504, 505, 506, 507, 508, 509, 510, 511, 512, 513, 514, 515, 516, 517, 518, 519, 520, 521, 522, 523, 524, 525, 526, 527, 528, 529, 530, 531, 532, 533, 534, 535, 536, 537, 538, 539, 540, 541, 542, 543, 544, 545, 546, 547, 548, 549, 550, 551, 552, 553, 554, 555, 556, 557, 558, 559, 560, 561, 562, 563, 564, 565, 566, 567, 568, 569, 570, 571, 572, 573, 574, 575, 576, 577, 578, 579, 580, 581, 582, 583, 584, 585, 586, 587, 588, 589, 590, 591, 592, 593, 594, 595, 596, 597, 598, 599, 600, 601, 602, 603, 604, 605, 606, 607, 608, 609, 610, 611, 612, 613, 614, 615, 616, 617, 618, 619, 620, 621, 622, 623, 624, 625, 626, 627, 628, 629, 630, 631, 632, 633, 634, 635, 636, 637, 638, 639, 640, 641, 642, 643, 644, 645, 646, 647, 648, 649, 650, 651, 652, 653, 654, 655, 656, 657, 658, 659, 660, 661, 662, 663, 664, 665, 666, 667, 668, 669, 670, 671, 672, 673, 674, 675, 676, 677, 678, 679, 680, 681, 682, 683, 684, 685, 686, 687, 688, 689, 690, 691, 692, 693, 694, 695, 696, 697, 698, 699, 700, 701, 702, 703, 704, 705, 706, 707, 708, 709, 710, 711, 712, 713, 714, 715, 716, 717, 718, 719, 720, 721, 722, 723, 724, 725, 726, 727, 728, 729, 730, 731, 732, 733, 734, 735, 736, 737, 738, 739, 740, 741, 742, 743, 744, 745, 746, 747, 748, 749, 750, 751, 752, 753, 754, 755, 756, 757, 758, 759, 760, 761, 762, 763, 764, 765, 766, 767, 768, 769, 770, 771, 772, 773, 774, 775, 776, 777, 778, 779, 780, 781, 782, 783, 784, 785, 786, 787, 788, 789, 790, 791, 792, 793, 794, 795, 796, 797, 798, 799, 800, 801, 802, 803, 804, 805, 806, 807, 808, 809, 810, 811, 812, 813, 814, 815, 816, 817, 818, 819, 820, 821, 822, 823, 824, 825, 826, 827, 828, 829, 830, 831, 832, 833, 834, 835, 836, 837, 838, 839, 840, 841, 842, 843, 844, 845, 846, 847, 848, 849, 850, 851, 852, 853, 854, 855, 856, 857, 858, 859, 860, 861, 862, 863, 864, 865, 866, 867, 868, 869, 870, 871, 872, 873, 874, 875, 876, 877, 878, 879, 880, 881, 882, 883, 884, 885, 886, 887, 888, 889, 890, 891, 892, 893, 894, 895, 896, 897, 898, 899, 900, 901, 902, 903, 904, 905, 906, 907, 908, 909, 910, 911, 912, 913, 914, 915, 916, 917, 918, 919, 920, 921, 922, 923, 924, 925, 926, 927, 928, 929, 930, 931, 932, 933, 934, 935, 936, 937, 938, 939, 940, 941, 942, 943, 944, 945, 946, 947, 948, 949, 950, 951, 952, 953, 954, 955, 956, 957, 958, 959, 960, 961, 962, 963, 964, 965, 966, 967, 968, 969, 970, 971, 972, 973, 974, 975, 976, 977, 978, 979, 980, 981, 982, 983, 984, 985, 986, 987, 988, 989, 990, 991, 992, 993, 994, 995, 996, 997, 998, 999, 1000.

STATE OF WYOMING }
 COUNTY OF PARK }
 I, JAMES E. CLARK, County Clerk of Park County, Wyoming, do hereby certify that the above and foregoing certificate of dedication was filed for record in the office of the County Clerk of Park County, Wyoming, on the 5th day of July, 1994 A.D., and is duly recorded as Book 31744, Page 42.

AMENDED
 PLAT OF
CARTER VIEW RANCHES
 LOCATED IN
 PARK COUNTY, WYOMING