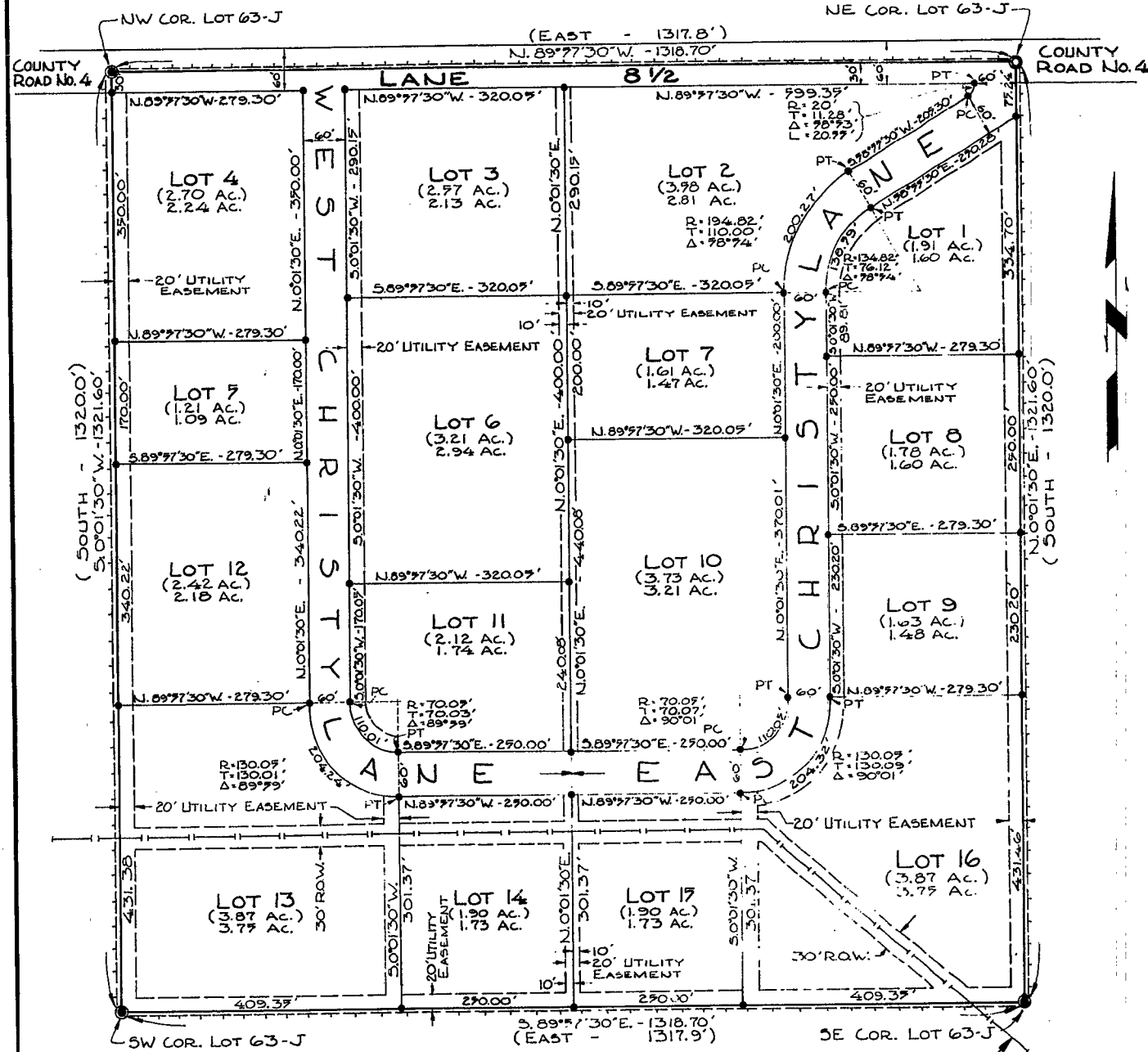


T. 77 N., R. 98 W.

T. 77 N., R. 98 W.



PLAN
SCALE: 1" = 100'

LEGEND

BOUNDARY OF SUBDIVISION SHOWN THIS ---
 EXTERIOR LINE OF SUBDIVISION SHOWN THIS ---
 INTERIOR LOT LINE SHOWN THIS ---
 TOTAL NUMBER OF LOTS WITHIN SUBDIVISION THIS ---
 GROSS AREA OF LOTS TO ROAD CENTERLINES SHOWN THIS ---
 NET AREA OF LOTS SHOWN THIS ---
 ALUMINUM CAP ON 7/8" X 1/8" RE-BAR SET AS LOT CORNERS THIS SURVEY SHOWN THIS ---
 STANDARD REGULATION POST WITH BRASS CAP SET THIS SURVEY SHOWN THIS ---
 1/2" BUREAU OF RECLAMATION PIPE SURVEY CORNER FOUND IN PLACE, REPLACED BY STANDARD REGULATION POST WITH BRASS CAP THIS SURVEY TO COMPLY WITH PARK COUNTY SUBDIVISION REGULATIONS SHOWN THIS ---
 20' UTILITY EASEMENTS SHOWN THIS ---
 BEARINGS & DISTANCES OF RECORD (OBTAINED BY COMPUTING BREAKDOWN OF Q.L.O. PLAT DATA) --- (EAST - 1317.9')

APPROXIMATE LOCATION OF SHOPHONE IRRIGATION DISTRICT UNDERGROUND DRAIN TILE. THERE IS NO SPECIFIC ROW WIDTH GIVEN FOR THE LINE. HOWEVER THE IRRIGATION DISTRICT SAID TO USE A 30 FOOT TOTAL R.O.W. WIDTH, 15 FEET ON EACH SIDE OF THE PIPELINE CENTERLINE. THE CHRISTIANSEN'S HIRED A BACKHOE AND SEARCHED FOR THE DRAIN LINE WITH THE IRRIGATION DISTRICT'S HELP FOR TWO WEEKS, TO NO AVAIL. THE MAN FROM THE IRRIGATION DISTRICT (EVERETT STOUT) THAT WAS ACTUALLY THERE WHEN THE LINE WAS PUT IN, WAS THERE HELPING SEARCH FOR IT HIMSELF, BUT IT STILL COULDN'T BE FOUND. THE LINE AS DRAWN HEREON IS A RESULT OF THE COMBINATION OF MR. STOUT'S MEMORY AND IRRIGATION DISTRICT'S RECORDS.



TYPICAL BRASS CAP (NORTHEAST CORNER SHOWN) TYPICAL ALUMINUM CAP

MONUMENT & LOT CORNER MARKINGS
 NOTE THAT STEEL FENCE POSTS WERE NOT SET BY THE EXTERIOR MONUMENTS AS NORMALLY REQUIRED BY THE PARK COUNTY SUBDIVISION REGULATIONS BECAUSE TWO OF THESE CORNERS ARE IN A COUNTY ROAD AND THE OTHER TWO ARE IN FIELD ROADS. SEE THE CORNER RECORDATION CERTIFICATES FOR DETAILS.

NOTE

No Proposed Public Sewage Disposal System

LAND AREA SUMMARY

TOTAL AREA OF SUBDIVISION PERIMETER	4001 ACRES
TOTAL GROSS AREA OF 16 LOTS	4001 ACRES
TOTAL NET AREA OF 16 LOTS	3945 ACRES
TOTAL ROAD AREA WITHIN SUBDIVISION	476 ACRES

CERTIFICATE OF DEDICATION

THE UNDERSIGNED, DO HEREBY CERTIFY AS FOLLOWS. WE ARE THE OWNERS OF LOT 63-J WITHIN LOT 63, T. 77 N., R. 98 W. OF THE 10TH 1/2 N., PARK COUNTY, WYOMING. WE HAVE CAUSED SAID LOTS TO BE SURVEYED AND PLATTED AS SHOWN HEREON. THE SUBDIVISION OF SAID LANDS AS APPEARS ON THIS PLAT, IS WITH THE FREE CONSENT AND IN ACCORDANCE WITH THE DESIRES OF THE UNDERSIGNED OWNERS AND PROPRIETORS. THE SUBDIVISION SHALL BE KNOWN HEREINAFTER AS "CHRISTYLAKE SUBDIVISION". WE HEREBY DEDICATE AND SET APART THE ROADS AS SHOWN HEREON TO THE USE OF THE GENERAL PUBLIC. WE HEREBY RELEASE AND RELINQUISH ALL RIGHTS OF HOMESTEAD.

IN WITNESS WHEREOF WE HAVE HEREUNTO SET OUR HANDS THIS 21 DAY OF APRIL, 1980.

STEVEN K. CHRISTIANSEN AND DEBORAH A. CHRISTIANSEN
 HUSBAND AND WIFE

STATE OF WYOMING } 55
 COUNTY OF PARK }

THE FOREGOING CERTIFICATE WAS ACKNOWLEDGED BEFORE ME BY STEVEN K. CHRISTIANSEN AND DEBORAH A. CHRISTIANSEN, HUSBAND AND WIFE THIS 22 DAY OF APRIL, 1980.

WITNESS MY HAND AND OFFICIAL SEAL.

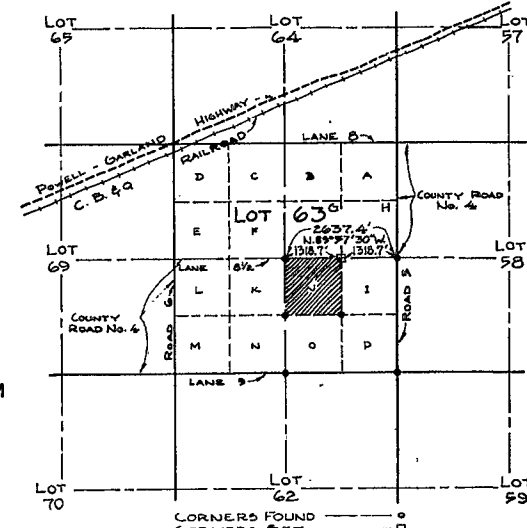
Notary Public

MY COMMISSION EXPIRES: June 21, 1982

SUBDIVISION PERMIT

A SUBDIVISION PERMIT IS HEREBY GRANTED FOR THE SUBDIVISION SHOWN HEREON THIS 21 DAY OF APRIL, 1980, BY THE COMMISSIONERS OF PARK COUNTY, WYOMING AND THIS PLAT IS HEREBY APPROVED.

ATTEST: *Marie Fontaine*
 COUNTY CLERK



VICINITY MAP
 SCALE: 1" = 2000'

CERTIFICATE OF SURVEYOR

STATE OF WYOMING } 55
 COUNTY OF PARK }

I, DARVIN D. DIETZ, A LAND SURVEYOR REGISTERED IN WYOMING BY REGISTRATION NUMBER 696 RE. L.S. HEREBY CERTIFY AS FOLLOWS, BETWEEN 27 SEPTEMBER & 20 DECEMBER, 1979 THE CHRISTYLAKE SUBDIVISION SHOWN HEREON WAS SURVEYED BY ME AND UNDER MY DIRECTION BY GARY R. HAGLUND, FOR WHOM WORK I STAND PERSONALLY RESPONSIBLE. THE LAND SURVEYED IS CORRECTLY DESCRIBED IN THE OWNERS CERTIFICATE OF DEDICATION AND THE SUBDIVISION THEREOF IS CORRECTLY SHOWN ON THIS PLAT WHICH IS DRAWN TO THE SCALE INDICATED. DIMENSIONS ARE GIVEN IN FEET AND DECIMALS. DIRECTIONS ARE GIVEN IN DEGREES, MINUTES AND SECONDS OF ARC AND ARE REFERRED TO THE TRUE MERIDIAN WHICH WAS DETERMINED FROM THE EAST LINE OF LOT 63, BEARING DUE NORTH. I AM FAMILIAR WITH THE PARK COUNTY SUBDIVISION REGULATIONS AND BELIEVE THIS SUBDIVISION COMPLIES WITH THEM IN EVERY RESPECT. LOST OR OBLITERATED GOVERNMENT LAND CORNER MONUMENTS WERE RESTORED AS REQUIRED. SUBDIVISION OF SECTIONS, LOTS OR TRACTS INTO ALIQUOT PARTS WAS DONE AS REQUIRED. CERTIFIED LAND CORNER RECORDATION CERTIFICATES HAVE BEEN RECORDED IN THE OFFICE OF THE PARK COUNTY CLERK FOR EVERY SURVEYING MONUMENT RECOVERED DURING THE SURVEY OF THIS SUBDIVISION IN ACCORDANCE WITH THE REQUIREMENTS OF W.S. 30-21F THROUGH 30-224. MONUMENTS SHOWN AND ALL LOT CORNERS MARKING THIS SURVEY WERE ACTUALLY SET AND THE MONUMENTS ARE AS DESCRIBED HEREON. ALL ELEMENTS OF THE SURVEY CLOSE TO AN ACCURACY OF ONE PART IN FIVE THOUSAND OR BETTER.

Darvin D. Dietz
 DARVIN D. DIETZ



STATE OF WYOMING } 55
 COUNTY OF PARK }

THE FOREGOING CERTIFICATE WAS ACKNOWLEDGED BEFORE ME BY DARVIN D. DIETZ THIS 14 DAY OF APRIL, 1980.

WITNESS MY HAND AND OFFICIAL SEAL.

Notary Public

MY COMMISSION EXPIRES: Aug 30, 1982

STEVE AND DEBBIE CHRISTIANSEN
 POWELL, WYOMING

PLAT OF
CHRISTYLAKE SUBDIVISION
 BEING IDENTICAL WITH
LOT 63-J, T. 77 N., R. 98 W.
 ACCORDING TO THE GOVERNMENT RESURVEY
 PARK COUNTY, WYOMING
 REVISION DATE: _____

9 APRIL 1980
R. H. Marshall