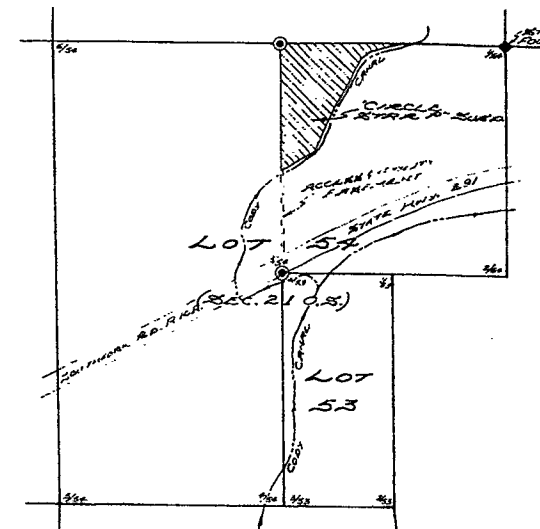
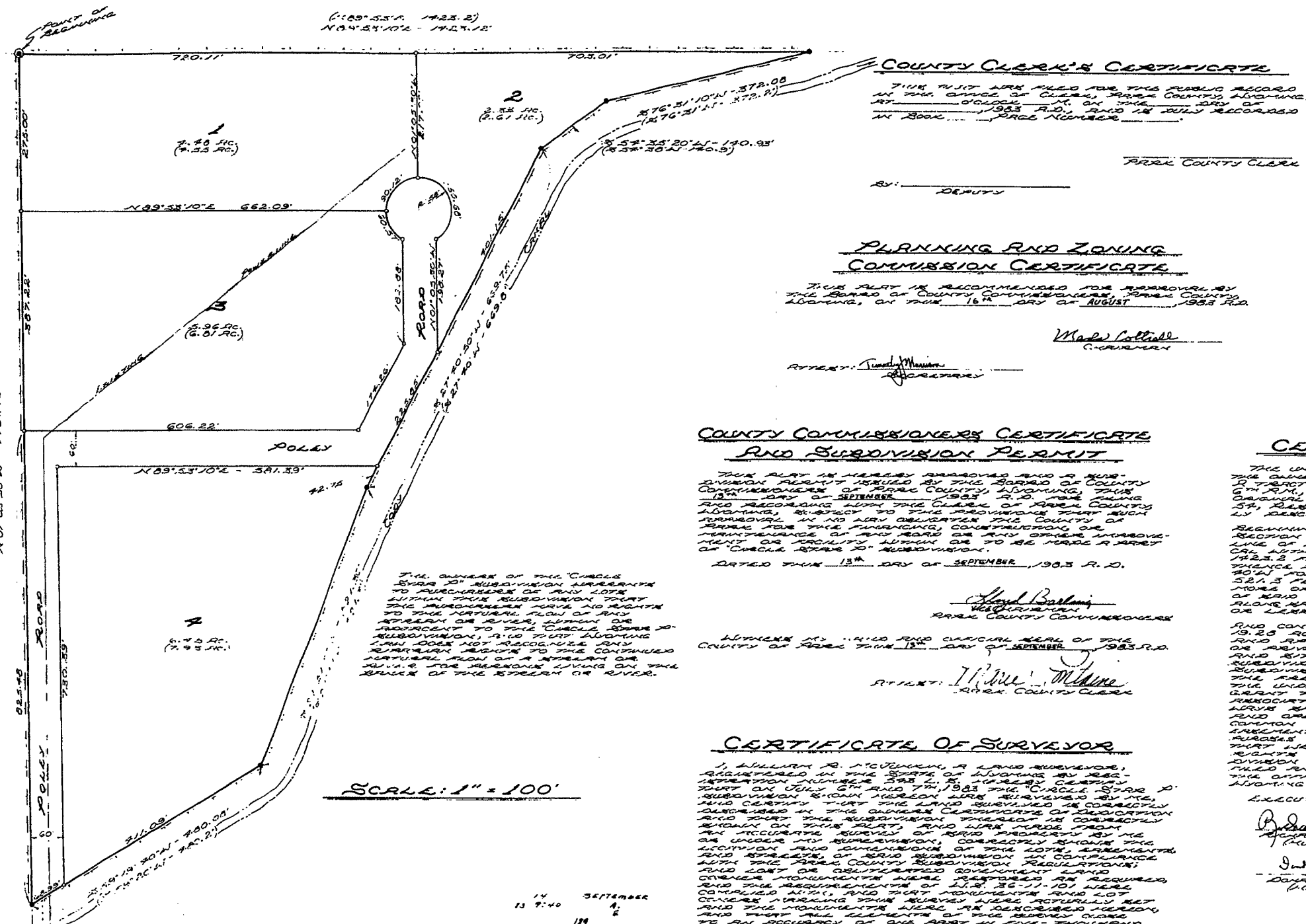


NO PUBLIC MAINTENANCE OF STREETS OR ROADS
 NO PUBLIC OR CENTRAL SEWERAGE DISPOSAL SYSTEM PROPOSED
 NO PROPOSED DOMESTIC WATER SOURCE

T. 52 N., R. 102 W.
 (REURVUE)



COUNTY CLERK'S CERTIFICATE
 THIS INSTRUMENT WAS FILED FOR THE PUBLIC RECORD IN THE OFFICE OF CLERK, PARK COUNTY, MONTANA, AT 10 O'CLOCK P.M. ON THE 29TH DAY OF JULY, 1983 A.D., AND IS JULY RECORDED IN BOOK _____ PAGE NUMBER _____
 PARK COUNTY CLERK
 DEPUTY

PLANNING AND ZONING COMMISSION CERTIFICATE
 THIS PLAN IS RECOMMENDED FOR APPROVAL BY THE BOARD OF COUNTY COMMISSIONERS, PARK COUNTY, MONTANA, ON THIS 16th DAY OF AUGUST, 1983 A.D.
 Made Cottrell
 CHAIRMAN
 RT. CLERK: [Signature] SECRETARY

COUNTY COMMISSIONERS CERTIFICATE AND SUBDIVISION PERMIT
 THIS PLAN IS HEREBY APPROVED AND A SUBDIVISION PERMIT ISSUED BY THE BOARD OF COUNTY COMMISSIONERS OF PARK COUNTY, MONTANA, THIS 15th DAY OF SEPTEMBER, 1983 A.D., THE AND RECORDING WITH THE CLERK OF PARK COUNTY MONTANA, SUBJECT TO THE PROVISIONS SET FORTH HEREIN, IN NO WAY CONSTITUTE THE COUNTY OF PARK THE FINANCING, CONSTRUCTION OR MAINTENANCE OF ANY ROAD OR ANY OTHER IMPROVEMENT OR FACILITY WHICH IS TO BE MADE A PART OF "CIRCLE STAR P" SUBDIVISION.
 DATED THIS 15th DAY OF SEPTEMBER, 1983 A.D.
 Lloyd Baskin
 PARK COUNTY COMMISSIONERS

CERTIFICATE OF DEDICATION
 THE UNDERSIGNED, DO HEREBY CERTIFY THAT WE ARE THE OWNERS OF THE REAL PROPERTY AS FOLLOWING: A TRACT OF LAND IN NE1/4 SECTION 21, T. 52 N., R. 102 W., 6TH P.M., PARK COUNTY, MONTANA, ACCORDING TO THE ORIGINAL CONVEYANCE BEING A TRACT OF LAND 57.4 ACRES, BEHAVEN, ROAD TRACT BEING MORE PARTICULARLY DESCRIBED BY METES AND BOUNDS AS FOLLOWS:
 BEGINNING AT THE NORTH 1/4 CORNER OF SAID SECTION 21; THENCE N 89° 58' E ALONG THE NORTH LINE OF SAID SECTION 21, SAID LINE BEING IDENTICAL WITH THE NORTH LINE OF LOT 57, FOR 1422.2 FEET; THENCE S 76° 51' W. FOR 572.2 FEET; THENCE S 52° 35' 20" W. FOR 140.93 FEET; THENCE S 76° 51' W. FOR 663.0 FEET; THENCE S 21° 3' E FOR 521.3 FEET; THENCE S 55° 20' W. FOR 430.2 FEET; MORE OR LESS TO A POINT ON THE WEST LINE OF SAID NE1/4 SECTION 21; THENCE OF SAID LINE ALONG SAID WEST LINE FOR 1477.6 FEET, MORE OR LESS, TO THE POINT OF BEGINNING.
 AND CONTAINING 21.03 TOTAL ACRES OF WHICH 19.25 ACRES ARE AN UNDIVIDED TRACT OR LOTS AND APPROXIMATELY 2.07 ACRES ARE IN PUBLIC OR PRIVATE STREET RIGHT-OF-WAY, EASEMENTS AND OTHERS AND HAVE LAIN OUT, PLATTED, AND RECORDED INTO LOTS IN THE CIRCLE STAR P SUBDIVISION IN PARK COUNTY, MONTANA, WITH THE STATE COMMISSION AND IN ACCORDANCE WITH THE UNDIVIDED OWNERS AND COMMON LAWORS AND OWNERS SPACE MONUMENTS MONUMENTS GRANT TO THE CIRCLE STAR P SUBDIVISION FOR COMMON USE THE RIGHTS OF SAID UNDIVIDED OWNERS AND COMMON LAWORS AND OWNERS SPACE MONUMENTS MONUMENTS MONUMENTS GRANT TO THE CIRCLE STAR P SUBDIVISION COMMON USE AND THE UTILITY AND DRAINAGE EASEMENTS AND DEDICATION RIGHTS AND ANY OTHER RIGHTS SO FAR AS TO SAID TRACT BEING OFFERED SUBJECT TO THE CONVEYANCE FILED AND RECORDED IN THE OFFICE OF THE CLERK OF PARK COUNTY, MONTANA.
 EXECUTED THIS 29th DAY OF JULY, 1983 A.D.

WITNESS MY HAND AND OFFICIAL SEAL OF THE COUNTY OF PARK THIS 15th DAY OF SEPTEMBER, 1983 A.D.
 RT. CLERK: [Signature] PARK COUNTY CLERK

CERTIFICATE OF SURVEYOR
 I, WILLIAM R. MCGOWAN, A LAND SURVEYOR, REGISTERED IN THE STATE OF MONTANA BY REGISTRATION NUMBER 593 R., THAT ON JULY 27th AND 28th, 1983 THE CIRCLE STAR P SUBDIVISION BEING HEREON WERE SURVEYED BY ME, AND CERTIFY THAT THE LAND SURVEYED IS CORRECTLY DESCRIBED IN THE ORIGINAL CERTIFICATE OF DEDICATION AND THAT THE SUBDIVISION THEREOF IS CORRECTLY SHOWN ON THIS PLAN, AND THAT THERE FROM AN ACCURATE SURVEY OF SAID PROPERTY BY ME OR UNDER MY SUPERVISION, CORRECTLY SHOWS THE LOCATION AND DIMENSIONS OF THE LOTS, EASEMENTS AND OTHERS OF SAID SUBDIVISION IN COMPLIANCE WITH THE PARK COUNTY SUBDIVISION REGULATIONS; AND THAT THE REQUIREMENTS OF M.S.A. 76-11-101 WERE COMPLIED WITH, AND THAT MONUMENTS FOR LOT CORNERS MARKING THIS SURVEY WERE ACTUALLY SET AND THE MONUMENTS WERE AS DESCRIBED HEREIN, AND THAT ALL ELEMENTS OF THIS SURVEY OFFERS TO AN ACCURACY OF ONE PART IN FIVE THOUSAND OR BETTER.
 IN WITNESS WHEREOF I HAVE SET MY HAND THIS 16th DAY OF AUGUST, 1983 A.D.
 WILLIAM R. MCGOWAN
 SURVEYOR

[Signatures of Dedictees: Robert Dole, Jr., Constancia E. Dole, Dale Lynn, Joyce Lynn, Mary C. Avey]

WITNESS MY HAND AND OFFICIAL SEAL OF THE COUNTY OF PARK THIS 16th DAY OF AUGUST, 1983 A.D.
 MARY C. AVEY
 COUNTY CLERK

STATE OF MONTANA? []
 COUNTY OF PARK? []
 THE FOREGOING DEDICATION WAS ACKNOWLEDGED BY ME, BY REGISTERED PARTY OR CONSTANCIA E. DOLEY, DAVID JOYCE LYNN, DAVID LYNN, GRADY POLY AND KENNETH POLY THIS 29th DAY OF JULY, 1983.
 WITNESS MY HAND AND OFFICIAL SEAL.
 MY COMMISSION EXPIRES: 1-26-84
 MARY C. AVEY
 COUNTY CLERK
 PART SHOWING
 "CIRCLE STAR P" SUBDIVISION
 BEING PART OF LOT 54
 T. 52 N., R. 102 W. OF THE 6TH P.M.
 REURVUE, PARK COUNTY, MONTANA

THE OWNERS OF THE CIRCLE STAR P SUBDIVISION HEREBY TO PURCHASERS OF ANY LOTS WITHIN THIS SUBDIVISION THAT THE PURCHASERS HAVE NO RIGHT TO THE NATURAL FLOW OF ANY STREAM OR RIVER, WHICH IS ADJACENT TO THE CIRCLE STAR P SUBDIVISION, AND THAT ANY PURCHASER SHALL NOT ACCOONIDE ANY INTERFERE WITH THE NATURAL FLOW OF A STREAM OR RIVER FOR THE PURPOSES LIVING ON THE BANKS OF THE STREAM OR RIVER.

SCALE: 1" = 100'

14 SEPTEMBER 1983
 9:40 A.
 111
 Helen H. [Signature]

LEGEND

TOTAL NUMBER OF LOTS WITHIN THIS SUBD.	7
TOTAL AREA WITHIN THIS SUBD.	21.03 AC.
BARREERS FOUND IN PLACE	0
1/2" IRON WIRE FOUND IN PLACE	0
1/2" X 1/2" REBAR STRUTS AND []	0
NET LOT AREA KNOWN THIS	2.36 AC.
GROSS LOT AREA KNOWN THIS	(2.51 AC.)
DIMENSIONS OF RECORD	SECTION 21, 190.3
DIMENSIONS TAKEN THIS SURVEY	SECTION 21, 140.93
BOUNDARY OF "CIRCLE STAR P" SUBD.	