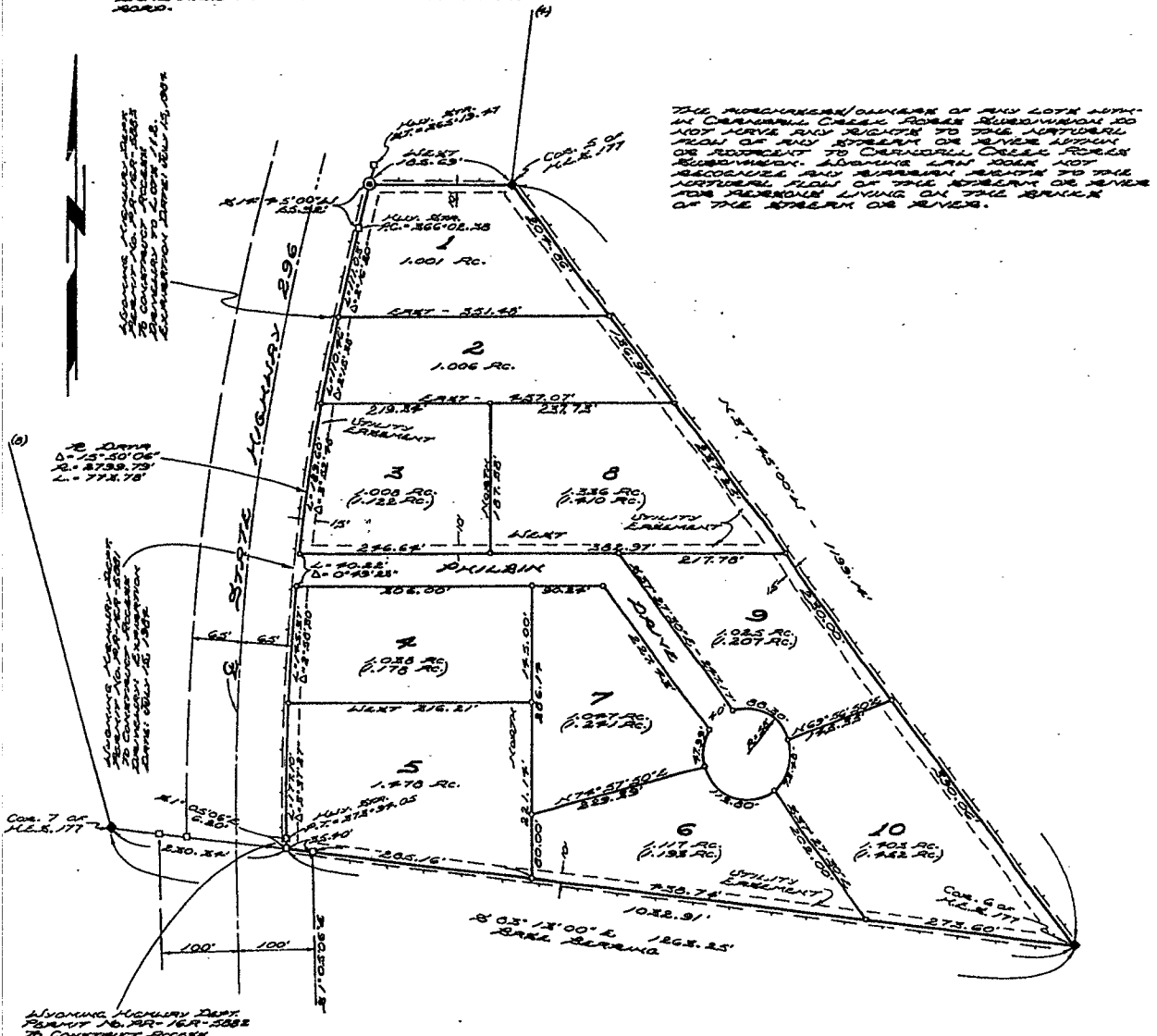


NO PUBLIC MAINTENANCE OF STREETS OR ROADS
NO PUBLIC OR CENTRAL SEWAGE DISPOSAL SYSTEM PROPOSED
NO PROPOSED DOMESTIC WATER SOURCE

ON AUGUST 23, 1983 THE PARK COUNTY COMMISSIONERS ADVISE AS FOLLOWS TO THE PLANNING AND ZONING BOARD...



SCALE: 1" = 100'

CERTIFICATE OF SURVEYOR

I, PAUL R. BLOUGH, A LAND SURVEYOR, REGISTERED IN THE STATE OF MONTANA BY REGISTRATION NO. 2332 L.S. NUMBERED CERTAIN THAT...

LOOKING REGISTRATION NO. 2332 L.S. Paul R. Blough
 STATE OF MONTANA, COUNTY OF PARK

I, THE FOREGOING CERTIFICATE WAS RECORDED BEFORE ME BY PAUL R. BLOUGH THIS 20th DAY OF SEPTEMBER, 1983 A.D.

NO COMMISSION EXAMINE: Sept. 26, 1984
 STATE OF MONTANA, COUNTY OF PARK

COUNTY COMMISSIONERS CERTIFICATE AND SUBDIVISION PERMIT

THIS PLAT IS HEREBY APPROVED AND A SUBDIVISION PERMIT ISSUED BY THE BOARD OF COUNTY COMMISSIONERS OF PARK COUNTY MONTANA, THIS 6th DAY OF DECEMBER, 1983 A.D. FOR SALES AND RECORDS...

Alvin Miller
 CHAIRMAN
 PARK COUNTY COMMISSIONERS

WITNESSE MY HAND AND OFFICIAL SEAL OF THE COUNTY OF PARK THIS 6th DAY OF DECEMBER, 1983 A.D.

RECORD: Maria Fontaine
 PARK COUNTY CLERK

CERTIFICATE OF DEDICATION

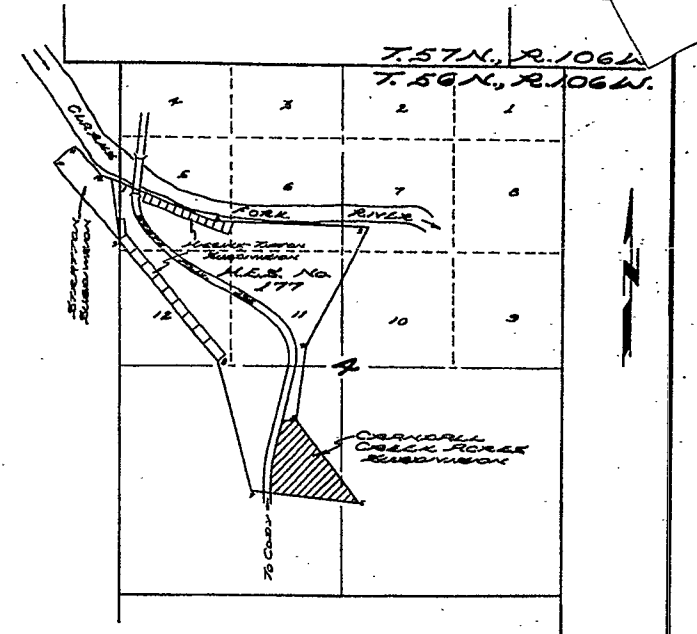
THE UNDERSIGNED, DO HEREBY CERTIFY THAT I AM THE OWNER OF THE REAL PROPERTY DESCRIBED AS FOLLOWS: 15 ACRES OF LAND IN N.E. 1/4, SECTION 11, T.56N., R.106W., OF THE 6th P.M. O.S. COUNTY OF PARK, MONTANA...

Alvin J. Anglin
 FLORENCE, MONTANA
 R.R. 1 BOX 100

STATE OF MONTANA, COUNTY OF PARK
 THE FOREGOING DEDICATION WAS RECORDED BEFORE ME BY FLORENCE J. ANGLIN THIS 26th DAY OF SEPTEMBER, 1983 A.D.
Mary C. Gray
 STATE OF MONTANA, COUNTY OF PARK

LEGEND

- STONE CORNER FOUND IN PLACE
- CONCRETE CORNER FOUND IN PLACE
- 2" G.I. P. WITH BRASS CAP NOT FOUND
- 12" X 20" BRASS CAPPING NOT FOUND
- TOTAL AREA WITHIN THIS SUBDIVISION: 12.209 AC.
- TOTAL NUMBER OF LOTS WITHIN THIS SUBDIVISION: 10
- NET LOT SQUARE METER: 1.186 AC.
- GRASS LOT SQUARE TO STREET & ROADWAY: (1.186 AC.)
- BOUNDARY OF CRANDALL CREEK FOREST SUBDIVISION



VICINITY MAP
 SCALE: 1" = 1000'

COUNTY CLERK'S CERTIFICATE

THIS PLAT WAS FILED FOR THE PUBLIC RECORD IN THE OFFICE OF CLERK OF PARK COUNTY, MONTANA, AT 1:50 O'CLOCK P.M. ON THE 15th DAY OF DECEMBER, 1983 A.D., AND IS FILED UNDER...

RECORDING NUMBER: 212001
Maria Fontaine
 PARK COUNTY CLERK
Rosetta Greenfield
 COUNTY

PLANNING AND ZONING COMMISSION CERTIFICATE

THIS PLAT IS RECOMMENDED FOR APPROVAL BY THE BOARD OF COUNTY COMMISSIONERS, PARK COUNTY, MONTANA, ON THE 15th DAY OF NOVEMBER, 1983 A.D.

Maria Cattell
 CHAIRMAN
 ATTENT: Trudy Manning
 SECRETARY

Plat Vacated 12-11-86
 Recorded in MF 136 - Pg. 783

PLAT SHOWING
CRANDALL CREEK ACRES SUBDIVISION
 BEING PART OF N.E. 1/4, SECTION 11, T.56N., R.106W. OF THE 6th P.M. O.S. PARK COUNTY, MONTANA