

- EAGLE VIEW SUBDIVISION -

T 52 N R 105 W

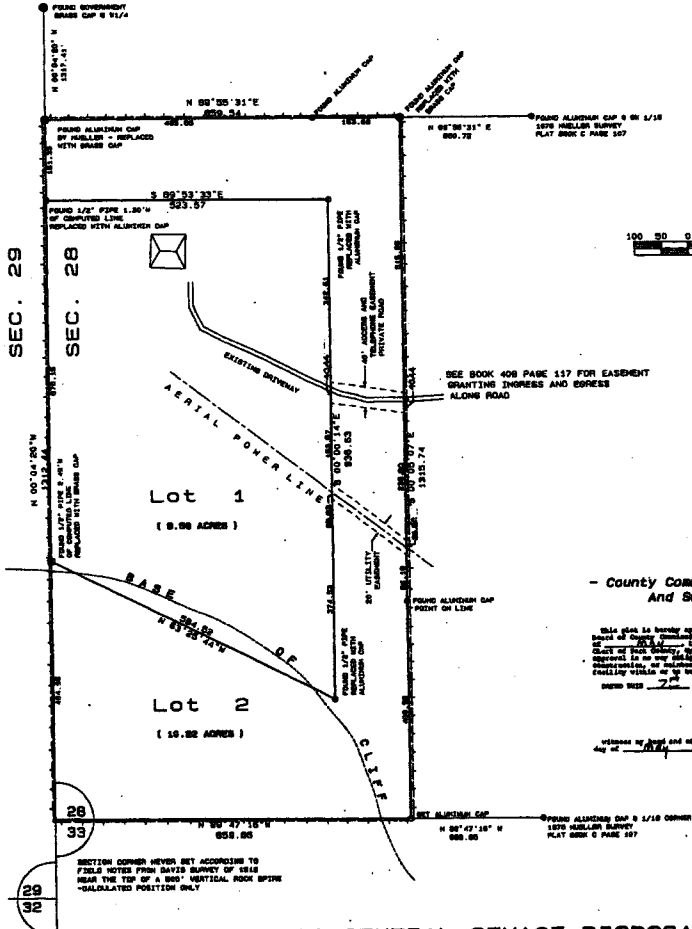


VICINITY MAP

Scale 1" = 2000'

LEGEND

- INDICATES SUBDIVISION BOUNDARY LINE
- INDICATES BRASS CAP SURVEY MONUMENT
- INDICATES FOUND ALUMINUM CAP MONUMENT
- INDICATES SET ALUMINUM CAP MONUMENT
- 2 INDICATES TOTAL NUMBER OF LOTS THIS SUBDIVISION



**NO PUBLIC OR CENTRAL SEWAGE DISPOSAL SYSTEM PROPOSED
NO PROPOSED DOMESTIC WATER SOURCE**



- Certificate Of Surveyor -

STATE OF WYOMING
COUNTY OF PARK

I, David A. Brueker, a land surveyor acting under authority as that County Surveyor, do hereby certify that between the 15th day of April, 1997 and the 15th day of May, 1997, I personally examined the plat for subdivision shown herein and approved the same and approved to be filed for record in the office of the State Surveyor, State of Wyoming, at Cheyenne, Wyoming, on the 15th day of May, 1997.

The subdivision located is hereby shown on said plat, and was made from an accurate survey of this property by an authorized person, the location and dimensions of the lines, courses and angles, the location and dimensions of the easements, and the location and dimensions of the easements were verified by the State Surveyor, State of Wyoming, and the measurements of the plat are true and correct.

In witness whereof, I have set my hand and seal this 23rd day of May, 1997.

David A. Brueker
Surveyor Registration No. 2008 L.S.

STATE OF WYOMING
COUNTY OF PARK

The foregoing conditions are unqualifiedly subject to this 23rd day of May, 1997.

Witness my hand and official seal.

Debra Ann Brueker
County Clerk

By Commission Expires: Nov 9, 1998

- Certificate Of Park County Clerk -

STATE OF WYOMING
COUNTY OF PARK

I, Debra Ann Brueker, Clerk of Park County, do hereby certify that the plat for subdivision shown herein was filed for record in the office of the State Surveyor, State of Wyoming, on the 15th day of May, 1997, and was approved by the State Surveyor, State of Wyoming, and the measurements of the plat are true and correct.

In witness whereof, I have set my hand and seal this 23rd day of May, 1997.

Debra Ann Brueker
Clerk of Park County

This plat was filed for the public record in the office of the Clerk, Park County, Wyoming, on the 23rd day of May, 1997, at 11:00 a.m.

Receipt No. 224853

Debra Ann Brueker
Clerk of Park County

- County Commissioners Certificate -
And Subdivision Permit

This plat is hereby approved and a subdivision permit issued in and under the authority of the County of Park County, Wyoming, and the State of Wyoming, and the measurements of the plat are true and correct.

Witness my hand and official seal of the County of Park County, Wyoming, on this 23rd day of May, 1997.

David A. Brueker
County Commissioner

Map Showing
EAGLE VIEW SUBDIVISION
Located in
**N 1/2 SW 1/4 SW 1/4 SECTION 28
T 52 N R 105 W**
PARK COUNTY WYOMING

**ENGINEERING ASSOCIATES - CODY WYOMING
CONSULTING ENGINEERS AND SURVEYORS**

Job No 89925 Plat Book 244 Date 4/18/98

AFFIDAVIT

STATE OF WYOMING)
)ss
COUNTY OF PARK)

I, David L. Brubaker, being of lawful age and duly sworn on oath depose and say:

THAT I am a duly registered Land Surveyor in the State of Wyoming.

THAT the intention of this affidavit is to show evidence relating to the discrepancies shown between a warranty deed recorded in Book 408, Page 116, Park County Court House, and Lot 1 of the Eagle View Subdivision.

THAT on July 9, 1968, a survey was performed in the SW 1/4 SW 1/4, Section 28, T22N, R105W, 6th P.M., Park County, Wyoming, for Dave Brannon. Survey monuments were set and a land description was created. This description was later incorporated into a warranty deed and recorded on December 29, 1975, in Book 408, Page 116.

THAT on April 17, 1985, I was instructed by Park County to record a subdivision plat covering the west half of the SW 1/4 SW 1/4 of said Section 28. During my field investigation, I recovered the original monuments which were set during the 1968 survey. Although there were large discrepancies in the bearing and distance calls between these corners, I held their ground position as found since the monuments were called for in the land description.

THAT when Lot 1 of the Eagle View Subdivision was created, it was intended to be identical with that particular tract of land conveyed in the warranty deed recorded in Book 408, Page 116.

AND FURTHER AFFIANT SAYETH NOT.

David L. Brubaker
David L. Brubaker
Wyoming Registration No. LS 3808

STATE OF WYOMING)
)ss
COUNTY OF PARK)

The foregoing affidavit was subscribed and sworn before me this 2nd day of July, 1985.
Witness my hand and official seal.

Abraham L. Parker
Notary Public



My commission expires: Nov. 9, 1990