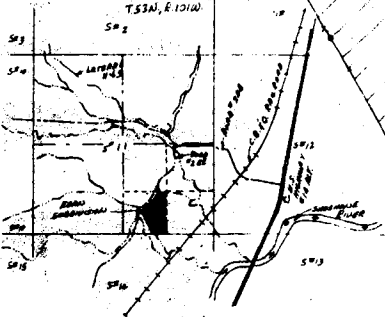


LEGEND

- 12" DIAM. WATER MAIN
- 6" DIAM. WATER MAIN
- 4" DIAM. WATER MAIN
- 2" DIAM. WATER MAIN
- 1" DIAM. WATER MAIN
- 1/2" DIAM. WATER MAIN
- 3/4" DIAM. WATER MAIN
- 1" DIAM. WATER MAIN
- 1 1/2" DIAM. WATER MAIN
- 2" DIAM. WATER MAIN
- 3" DIAM. WATER MAIN
- 4" DIAM. WATER MAIN
- 6" DIAM. WATER MAIN
- 8" DIAM. WATER MAIN
- 10" DIAM. WATER MAIN
- 12" DIAM. WATER MAIN
- 14" DIAM. WATER MAIN
- 16" DIAM. WATER MAIN
- 18" DIAM. WATER MAIN
- 20" DIAM. WATER MAIN
- 24" DIAM. WATER MAIN
- 30" DIAM. WATER MAIN
- 36" DIAM. WATER MAIN
- 42" DIAM. WATER MAIN
- 48" DIAM. WATER MAIN
- 54" DIAM. WATER MAIN
- 60" DIAM. WATER MAIN
- 72" DIAM. WATER MAIN
- 84" DIAM. WATER MAIN
- 96" DIAM. WATER MAIN
- 108" DIAM. WATER MAIN
- 120" DIAM. WATER MAIN
- 144" DIAM. WATER MAIN
- 168" DIAM. WATER MAIN
- 192" DIAM. WATER MAIN
- 216" DIAM. WATER MAIN
- 240" DIAM. WATER MAIN
- 264" DIAM. WATER MAIN
- 288" DIAM. WATER MAIN
- 312" DIAM. WATER MAIN
- 336" DIAM. WATER MAIN
- 360" DIAM. WATER MAIN
- 384" DIAM. WATER MAIN
- 408" DIAM. WATER MAIN
- 432" DIAM. WATER MAIN
- 456" DIAM. WATER MAIN
- 480" DIAM. WATER MAIN
- 504" DIAM. WATER MAIN
- 528" DIAM. WATER MAIN
- 552" DIAM. WATER MAIN
- 576" DIAM. WATER MAIN
- 600" DIAM. WATER MAIN
- 624" DIAM. WATER MAIN
- 648" DIAM. WATER MAIN
- 672" DIAM. WATER MAIN
- 696" DIAM. WATER MAIN
- 720" DIAM. WATER MAIN
- 744" DIAM. WATER MAIN
- 768" DIAM. WATER MAIN
- 792" DIAM. WATER MAIN
- 816" DIAM. WATER MAIN
- 840" DIAM. WATER MAIN
- 864" DIAM. WATER MAIN
- 888" DIAM. WATER MAIN
- 912" DIAM. WATER MAIN
- 936" DIAM. WATER MAIN
- 960" DIAM. WATER MAIN
- 984" DIAM. WATER MAIN
- 1008" DIAM. WATER MAIN
- 1032" DIAM. WATER MAIN
- 1056" DIAM. WATER MAIN
- 1080" DIAM. WATER MAIN
- 1104" DIAM. WATER MAIN
- 1128" DIAM. WATER MAIN
- 1152" DIAM. WATER MAIN
- 1176" DIAM. WATER MAIN
- 1200" DIAM. WATER MAIN

SCALE 1" = 60'



VICINITY MAP
SCALE 1" = 2000'

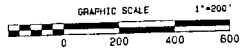
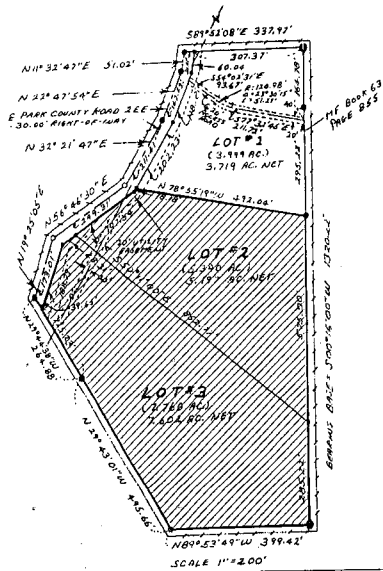
Prepared by
WILLIAM H. HARRIS
 Surveyor
 No. 228356

FOR: **BARBARA EGAN** CODY, WYOMING
IRRIGATION PLAN

EGAN SUBDIVISION

CADDIS RIVER - LAND STREAMS - CODY, WYOMING

T. 53 N., R. 101 W.
(RESURVEY)



EGAN SUBDIVISION
RECORDED IN PLAT BOOK "F" PAGE 27

CLERK AND RECORDER'S ACCEPTANCE

THIS AMENDED PLAT WAS ACCEPTED IN THE OFFICE OF THE CLERK AND RECORDER, PARK COUNTY, WYOMING AT 1:16 O'CLOCK P.M. ON THIS 19 DAY OF March 2003, FILED FOR RECORDING IN BOOK OR PLAT CABINET 6 AT PAGE 27 AND RECORDED AS COMPUTER RECORD DOCUMENT NUMBER 2003-2361.

MAREN GARDER
PARK COUNTY CLERK AND RECORDER

BY: *[Signature]*
DEPUTY COUNTY CLERK AND RECORDER

**BOARD OF COUNTY COMMISSIONERS
APPROVAL AND SUBDIVISION PERMIT**

THIS AMENDED PLAT IS HEREBY APPROVED AND THE SUBDIVISION PERMIT GRANTED BY THE BOARD OF COUNTY COMMISSIONERS OF PARK COUNTY, WYOMING THIS 12TH DAY OF MARCH, 2003.

[Signature]
CHAIRMAN

[Signature]
ATTEST:

[Signature]
PARK COUNTY CLERK

DATE: 3-18-03



CERTIFICATE OF DEDICATION

WE, THE UNDERSIGNED OWNERS, HEREBY CERTIFY THAT WE ARE THE OWNERS AND PROPRIETORS OF LOTS 2 AND 3, EGAN SUBDIVISION, ACCORDING TO THE PLAT RECORDED IN BOOK "F" OF PLAT, PAGE 27, ACCORDING TO THE RECORDS OF THE COUNTY CLERK AND RECORDER OF PARK COUNTY, STATE OF WYOMING.

THAT WE HAVE CAUSED SAID SUBDIVISION PLAT TO BE AMENDED AS SHOWN HEREON, SAID LOT 2 AS AMENDED IS SHOWN AS LOT 102 AND SAID LOT 3 AS AMENDED IS SHOWN AS LOT 103 RESPECTIVELY ON THE "AMENDED PLAT LOTS 2 AND 3 OF EGAN SUBDIVISION". THAT NO OTHER IMPROVEMENTS OF "EGAN SUBDIVISION" HAVE BEEN MADE, THAT THE AMENDMENT TO LOTS 2 AND 3 OF EGAN SUBDIVISION IS IN WITH THE FREE CONSENT AND IN ACCORDANCE WITH THE DESIRES OF THE UNDERSIGNED OWNERS AND PROPRIETORS AND THAT WE HEREBY DEDICATE TO THE COUNTY OF PARK, STATE OF WYOMING FOR THE USE BY THE PUBLIC, THE RIGHTS OF WAY AND OTHER PUBLIC AREAS AS SHOWN HEREON TO THE COUNTY OF PARK FOR USE BY UTILITY COMPANIES IN THE INSTALLATION AND MAINTENANCE OF UTILITY LINES AND FACILITIES AND HEREBY VACATE THE 10 FOOT WIDE IRRIGATION EASEMENT AS SHOWN ALONG THE LINE BETWEEN ORIGINAL LOTS 2 AND 3, THE IRRIGATION PLAN FILED IN PLAT BOOK "F" AT PAGE 27 IN THE RECORDS OF THE PARK COUNTY CLERK AND RECORDER.

[Signatures]
DANIEL K. MILLER
BRENDA D. MILLER

ACKNOWLEDGEMENT:

STATE OF WYOMING
COUNTY OF PARK
THE FOREGOING CERTIFICATE OF DEDICATION WAS ACKNOWLEDGED BEFORE ME THIS 11TH DAY OF MARCH 2003 BY DANIEL K. MILLER AND BRENDA D. MILLER.

WITNESS MY HAND AND OFFICIAL SEAL:
[Signature]
NOTARY PUBLIC

MY COMMISSION EXPIRES: Sept 26, 2004

BASES OF MEASURES:
TILE NORTH BASED ON FEDERAL POSITIONING SYSTEM OBSERVATIONS WITH THE BASE STATION LOCATED 501.800'E 139.20' FROM THE INTERSECTION CORNER OF LOT 101.

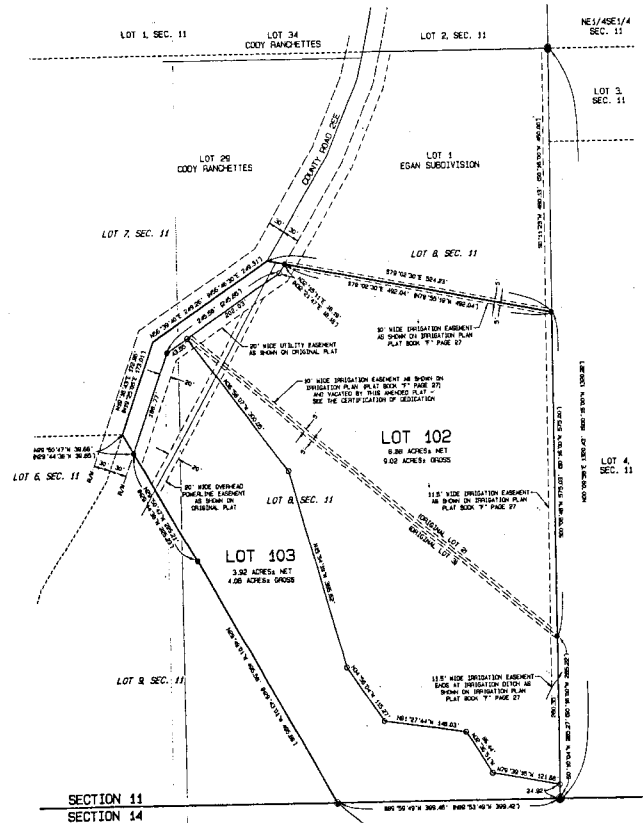
LEGEND

- INDICATES MEAN WITH 8" ALUM. CAP BIT
- INDICATES MEAN WITH ALUM. CAP PEGS
- INDICATES BRASS CAP FOUND
- INDICATES 8" IRON PIPE FOUND
- INDICATES AMENDED LOTS 2 AND 3
- RECORD DIMENSIONS SHOWN THERE ()

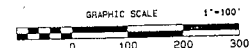
EASEMENTS OF RECORD

1. PIPE LINE RIGHT OF WAY TO STANGLIND PIPE LINE COMPANY IN UNITED STATES PATENT RECORDED NOVEMBER 13, 1981 IN BOOK 262 PAGE 263 (APPLICABLE TO PLAT)

T. 53 N., R. 101 W.
(RESURVEY)



**AMENDED PLAT
LOTS 2 AND 3 OF EGAN SUBDIVISION**
ENCOMPASSING 13.10 ACRES TOTAL



PLAT SHOWING

**AMENDED PLAT
LOTS 2 AND 3 OF
EGAN SUBDIVISION**

IN
LOT 8 OF SECTION 11, T. 53 N., R. 101 W., 6TH P.M.
PARK COUNTY, WYOMING (RESURVEY)

CERTIFICATE OF SURVEYOR

STATE OF WYOMING
COUNTY OF PARK
I, PAUL A. BLOUGH, OF THE FIRM OF HOLM, BLOUGH AND COMPANY OF CODY, WYOMING DO HEREBY CERTIFY THAT THIS MAP WAS PREPARED FROM FIELD NOTES TAKEN DURING AN ACTUAL SURVEY MADE UNDER MY DIRECT SUPERVISION ON JANUARY 7, 2003, AND THAT THIS MAP CORRECTLY SHOWS THE RESULTS OF SAID SURVEY AND THAT THE MEASUREMENTS SHOWN ON SAID MAP ARE AS NEAR TO THE BEST OF MY KNOWLEDGE AND BELIEF.

WYOMING L.S. REGISTRATION NO. 2332 *[Signature]*
BY: PAUL A. BLOUGH (AGENT)

