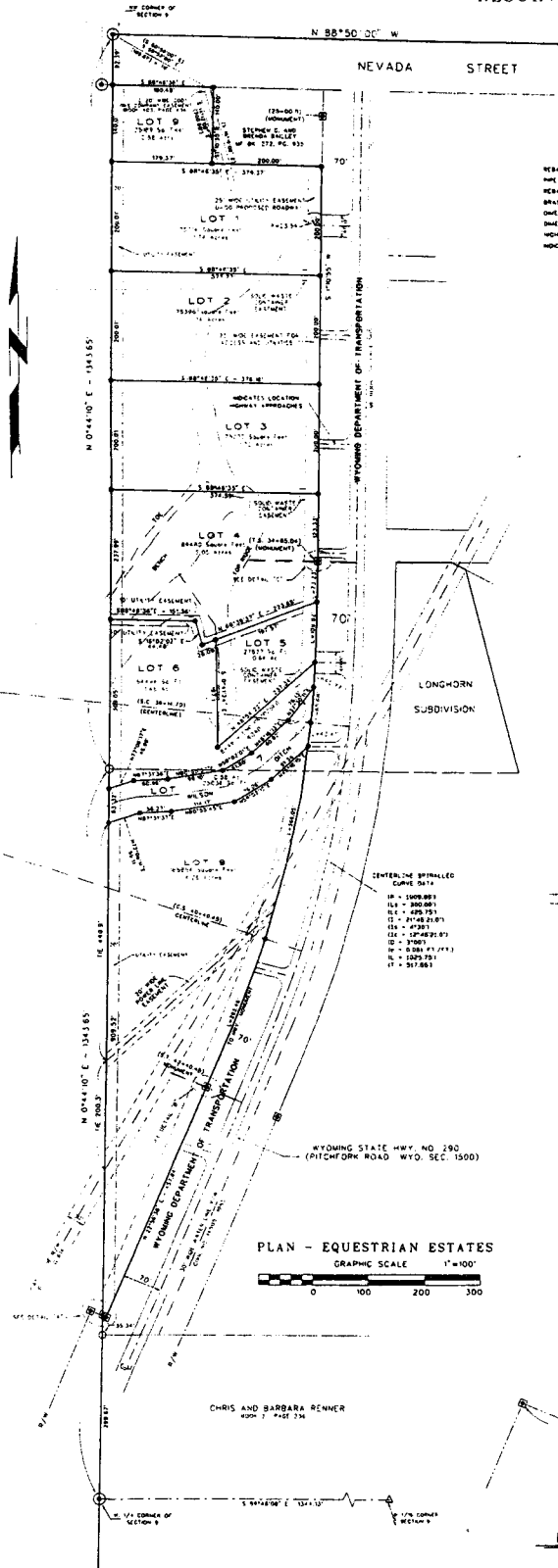


T. 48 N., R. 100 W.
RESURVEY



LEGEND

BEARS WITH ALUMINUM CAP FOUND Δ

THE CORNER FOUND IN PLACE \square

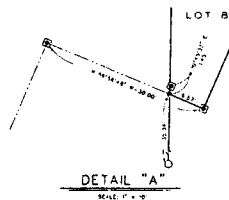
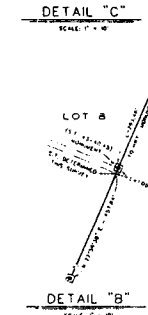
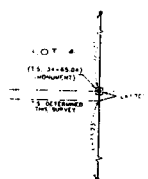
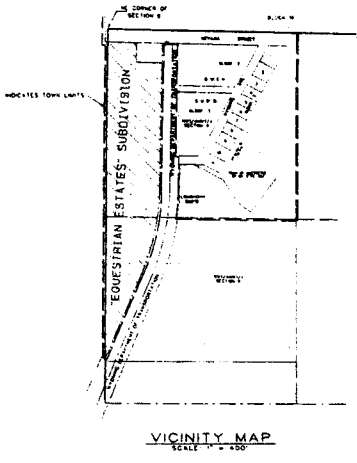
BEARS WITH ALUMINUM CAP SET \circ

BEARS CAP FOUND IN PLACE \bullet

DIMENSIONS THIS SURVEY --- IS 307'85" E 343'23"

WYOMING P.O. MONUMENT FOUND --- S 20°10'0" E 343'74"

INDICATES TOWN LIMITS ---



CERTIFICATE OF DEDICATION

STATE OF WYOMING } SS
COUNTY OF PARK } SS

I, ROY R. HOLM OF COUNTY OF PARK, WYOMING, HEREBY CERTIFY THAT HE IS THE OWNER AND PROPRIETOR OF A PARCEL OF LAND IN THE WEST QUARTER NORTHWEST ONE-QUARTER (NW1/4NW1/4) SECTION 9, TOWNSHIP 48 NORTH, RANGE 100 WEST OF THE 6TH P.M. PARK COUNTY, WYOMING GOVERNMENT RESURVEY, SAID PARCEL BEING MORE PARTICULARLY DESCRIBED AS FOLLOWS:

ALL OF SAID NW1/4NW1/4 SECTION 9, LYING WESTERLY OF THE WEST LINE OF THE LAND CONVEYED TO THE TRANSPORTATION COMMISSION OF WYOMING RECORDED IN W.P. BOOK 233 ON PAGE 803 OF THE BOOK OF DEEDS ON FILE IN THE PARK COUNTY CLERK AND RECORDER'S OFFICE, EXCEPTING THEREFROM THAT PARCEL OF LAND CONVEYED TO STEPHEN C. AND BRUNDA B. BAY BY WARRANTY DEED RECORDED IN W.P. BOOK 273 ON PAGE 935 OF SAID BOOK OF DEEDS.

THAT HE HAS CAUSED SAID DESCRIBED LANDS TO BE SURVEYED AND PLATTED AS SHOWN HEREON AS THE "EQUESTRIAN ESTATES" THAT THE SUBDIVISION AS IT APPEARS ON THIS PLAN IS BEING CONVEYED TO THE TOWN OF MEETEETSE BY DEED OF DEDICATION AND THAT HE DOES HEREBY DEDICATE AND SET APART THE EASEMENTS AND RIGHTS OF WAY SHOWN HEREON TO THE USE OF THE TOWN OF MEETEETSE. HE DOES HEREBY RELEASE AND RECONVEY ALL RIGHTS OF HOMESTEAD.

IN WITNESS WHEREOF, HE HAS HEREONTO SET HIS HAND THIS 15 DAY OF August 1986

Roy R. Holm
FRANK T. OWEN
FRANK T. OWEN (TRUSTEE)

STATE OF WYOMING } SS
COUNTY OF PARK } SS

THE FOREGOING DEDICATION IN DEDICATION OF THE FOREGOING PARCEL OF LAND BY FRANK T. OWEN THIS 15 DAY OF August 1986

WITNESS MY HAND AND OFFICIAL SEAL

MY COMMISSION EXPIRES
4-26-1988

OFFICIAL SEAL
FRANK T. OWEN
COUNTY CLERK OF PARK COUNTY, WYOMING

CERTIFICATE OF SURVEYOR

STATE OF WYOMING } SS
COUNTY OF PARK } SS

I, ROY R. HOLM OF COUNTY OF PARK, WYOMING, HEREBY CERTIFY THAT DURING THE PERIOD FROM OCTOBER 1985 TO AUGUST 1986, THE EQUESTRIAN ESTATES SUBDIVISION WAS SURVEYED BY ME AND UNDER MY DIRECTION, THAT SAID SUBDIVISION IS CORRECTLY DISCLOSED IN THE OWNERS CERTIFICATE OF DEDICATION ON THIS PLAN, WHICH IS DRAWN TO A SCALE OF 1"=100' EQUALS 100 FEET. THE DIMENSIONS OF LOTS ARE GIVEN AS FEET AND DECIMALS OF A FOOT AND ANY SURPLUS OR DEFICIENCY IS DISTRIBUTED PRO RATA IN PROPORTION TO MEASUREMENTS SHOWN ON THIS PLAN. EACH LOT BEARS ITS OWN NUMBER AND ALL LOT CORNERS ARE AS SHOWN ON THE PLAN. ALL ELEMENTS OF THE SURVEY CLOSE TO 1/16" OR LESS, THE WEST LINE OF SECTION 9, 1/4" N. 100' W. OF THE 5TH P.M. RESURVEY, BEARING 50°00' W. AS DETERMINED FROM A PREVIOUS SURVEY BY HOLM, BLOCH AND COMPANY, WAS USED AS THE BENCHMARK FOR ALL MEASUREMENTS OBTAINED DURING THIS SURVEY.

IN WITNESS WHEREOF, I HAVE HEREONTO SET MY HAND AND SEAL THIS 15 DAY OF August 1986

ROY R. HOLM
WYOMING REGISTRATION NO. 2246 PE & IS

OFFICIAL SEAL
ROY R. HOLM
SURVEYOR

TOWN COUNCIL APPROVAL

APPROVED THIS 14 DAY OF September 1986 BY THE TOWN COUNCIL OF MEETEETSE, WYOMING

John A. Landon
JOHN A. LANDON, MAYOR

Denoma Randall
DENOMA R. RANDALL, TOWN CLERK/TREASURER

STATE OF WYOMING } SS
COUNTY OF PARK } SS

THE FOREGOING APPROVAL WAS ACKNOWLEDGED BEFORE ME BY JOHN A. LANDON, MAYOR, AND DENOMA R. RANDALL, TOWN CLERK/TREASURER, THIS 14 DAY OF September 1986

WITNESS MY HAND AND OFFICIAL SEAL

NOTARY PUBLIC

MY COMMISSION EXPIRES
9/11/87

COUNTY CLERK'S CERTIFICATE

THIS PLAN WAS FILED FOR THE PUBLIC RECORD IN THE OFFICE OF THE CLERK, PARK COUNTY, WYOMING, AT 1:21 P.M. ON THE 9 DAY OF September 1986 A.D. AND IS BACK RECORDED IN BOOK E, PAGE NUMBER 162 RECEPTION #7716 5313 BY Marie Benjamine CLERK.

MARIE BENJAMINE
PARK COUNTY CLERK

PLANNING AND ZONING COMMISSION CERTIFICATE

THIS PLAN IS RECOMMENDED FOR APPROVAL BY THE TOWN PLANNING AND ZONING COMMISSION, MEETEETSE, WYOMING, ON THIS 14 DAY OF September 1986.

Wayne W. Pate
WAYNE W. PATE, CHAIRMAN

John A. Abbott
JOHN A. ABBOTT, SECRETARY

DATE 9-4-86

FRANK OWEN 224 E. HIGHWAY
MEETEETSE, WYOMING 82420-9882

FINAL PLAT SHOWING THE
"EQUESTRIAN ESTATES" SUBDIVISION
AN ADDITION TO THE TOWN OF MEETEETSE
IN THE NW1/4 SECTION 9
T. 48 N., R. 100 W. 6TH P.M.
PARK COUNTY, WYOMING (RESURVEY)

432 P. BUREAU RD. CODY
WYOMING 82401
701-241-1111

BOOK 242
PAGE 42
BLOCK 514

SEP 9 1986

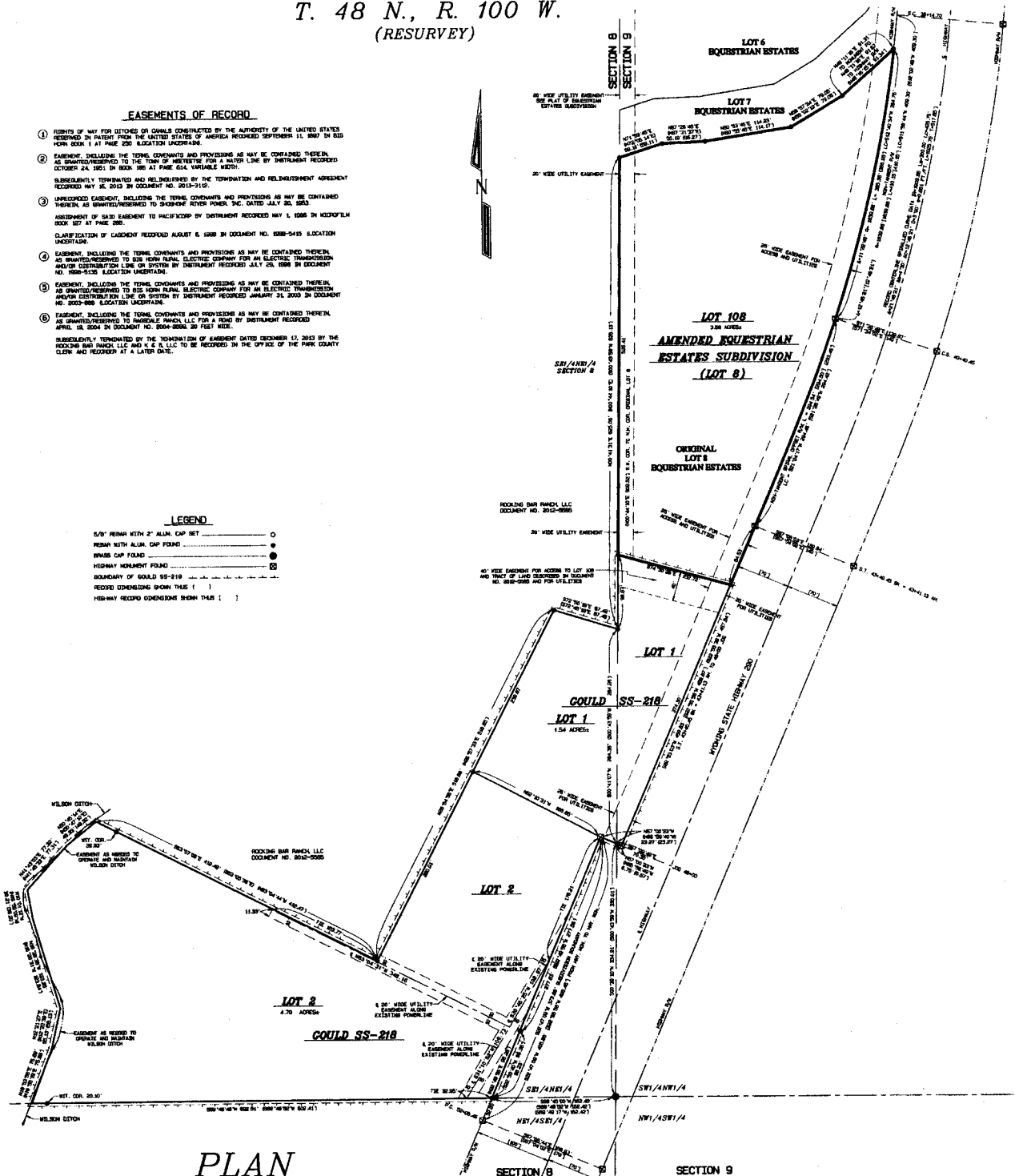
T. 48 N., R. 100 W.
(RESURVEY)

EASEMENTS OF RECORD

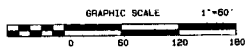
- ① RIGHTS OF WAY FOR UTILITIES ON CHANNELS CONSTRUCTED BY THE AUTHORITY OF THE UNITED STATES RESERVED IN PATENT FROM THE UNITED STATES OF AMERICA RECORDED SEPTEMBER 11, 1897 IN BLD BOOK 100A 1 AT PAGE 220 LOCATION UACR-214
- ② EASEMENT, INCLUDING THE TERMS, CONDITIONS AND PROVISIONS AS MAY BE CONTAINED THEREIN, AS GRANTED/PRESERVED TO THE TOWN OF MEETEETSE FOR A WATER LINE BY INSTRUMENT RECORDED OCTOBER 24, 1921 IN BLDK 100 AT PAGE 624 VARIABLE WIDTH; SUBSEQUENTLY TERMINATED AND RE-INDEMNIFIED BY THE TERMINATION AND RE-INDEMNIFICATION AGREEMENT RECORDED MAY 26, 2013 IN DOCUMENT NO. 2013-2142.
- ③ UNRECORDED EASEMENT, INCLUDING THE TERMS, CONDITIONS AND PROVISIONS AS MAY BE CONTAINED THEREIN, AS GRANTED/PRESERVED TO SHOOKING RIVER POWER, INC. DATED JULY 20, 2003 ASSIGNMENT OF SAID EASEMENT TO PACIFICORP BY INSTRUMENT RECORDED MAY 1, 2008 IN MICROFILM BOOK 127 AT PAGE 280; CLARIFICATION OF EASEMENT RECORDED AUGUST 6, 1998 IN DOCUMENT NO. 8988-0415 LOCATION UACR-214
- ④ EASEMENT, INCLUDING THE TERMS, CONDITIONS AND PROVISIONS AS MAY BE CONTAINED THEREIN, AS GRANTED/PRESERVED TO BSI FROM PLAIN ELECTRIC COMPANY FOR AN ELECTRIC TRANSMISSION AND/OR DISTRIBUTION LINE OR SYSTEM BY INSTRUMENT RECORDED JULY 20, 1998 IN DOCUMENT NO. 1998-2128 LOCATION UACR-214
- ⑤ EASEMENT, INCLUDING THE TERMS, CONDITIONS AND PROVISIONS AS MAY BE CONTAINED THEREIN, AS GRANTED/PRESERVED TO BSI FROM PLAIN ELECTRIC COMPANY FOR AN ELECTRIC TRANSMISSION AND/OR DISTRIBUTION LINE OR SYSTEM BY INSTRUMENT RECORDED JANUARY 24, 2003 IN DOCUMENT NO. 2003-2888 LOCATION UACR-214
- ⑥ EASEMENT, INCLUDING THE TERMS, CONDITIONS AND PROVISIONS AS MAY BE CONTAINED THEREIN, AS GRANTED/PRESERVED TO HADDLE TRAVEL LLC FOR A ROAD BY INSTRUMENT RECORDED APRIL 18, 2004 IN DOCUMENT NO. 2004-2006 20 FEET WIDE; SUBSEQUENTLY TERMINATED BY THE TERMINATION OF EASEMENT DATED DECEMBER 17, 2003 BY THE SHOOKING BAR RANCH LLC AND K & B, LLC TO BE RECORDED IN THE OFFICE OF THE PARK COUNTY CLERK AND RECORDER AT A LATER DATE.

LEGEND

- 5/8" REBAR WITH 2" ALUM. CAP SET ○
- REBAR WITH ALUM. CAP FOUND ●
- BRASS CAP FOUND ●
- HIGHWAY MARKING FOUND ●
- BOUNDARY OF GOULD SS-218 - - -
- ROADS DIMENSIONS SHOWN THESE ()
- HIGHWAY RECORD DIMENSIONS SHOWN THESE ()



PLAN



K AND B, LLC
MEETEETSE, WYOMING
PLAT SHOWING:
DE-ANNEXATION AND VACATION OF A PORTION OF LOT 8
OF THE EQUESTRIAN ESTATES SUBDIVISION
FROM THE TOWN OF MEETEETSE
AND

AMENDED EQUESTRIAN ESTATES SUBDIVISION (LOT 8)
IN THE TOWN OF MEETEETSE
AND

GOULD SS-218

LOCATED IN THE SE1/4NE1/4 SECTION 8 AND THE SW1/4NW1/4 SECTION 9,
T. 48 N., R. 100 W., 6TH P.M., PARK COUNTY, WYOMING (RESURVEY)

REVISION	DATE