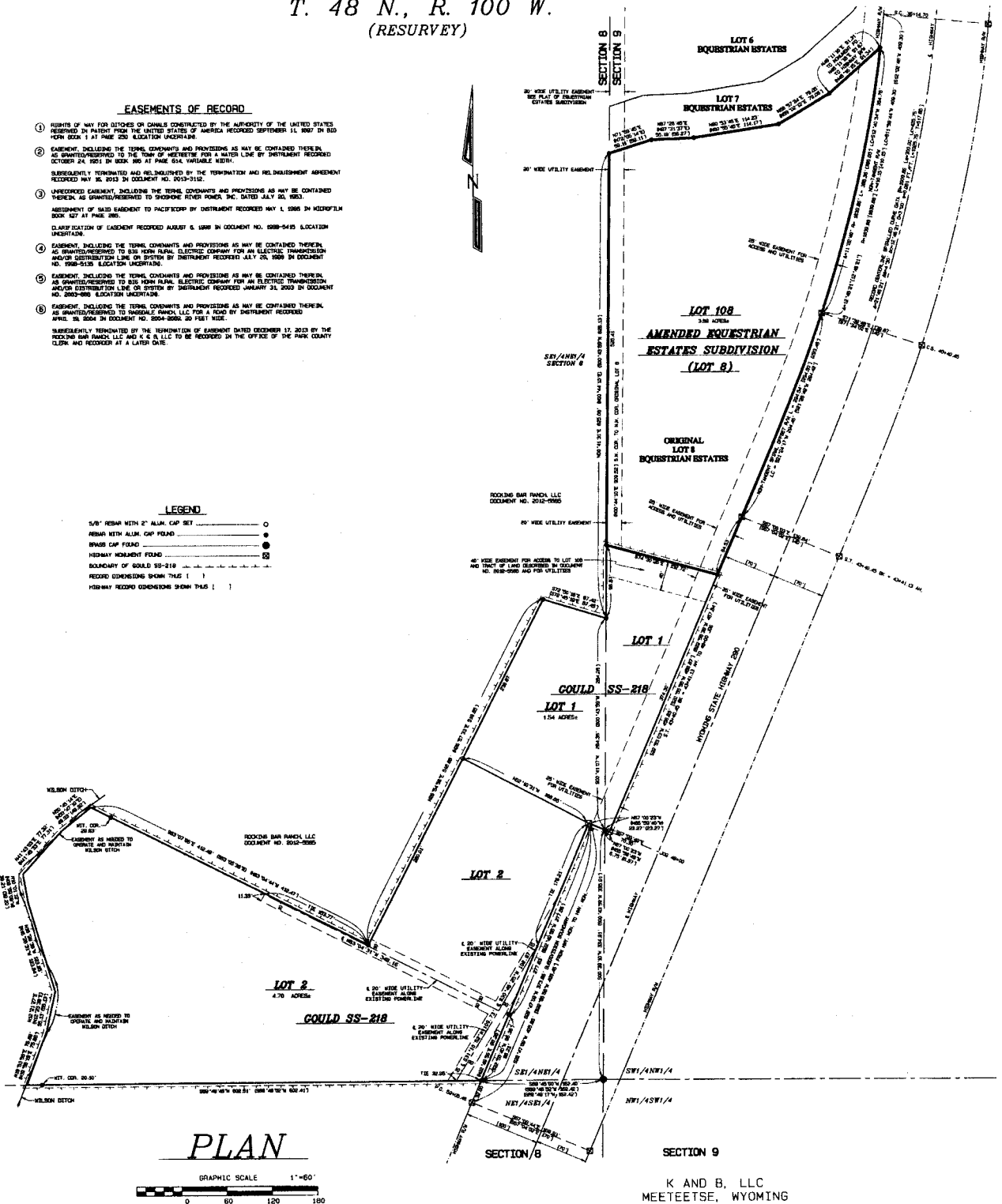


T. 48 N., R. 100 W.
(RESURVEY)

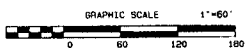
- EASEMENTS OF RECORD**
- RIGHTS OF WAY FOR DITCHES OR CANALS CONSTRUCTED BY THE AUTHORITY OF THE UNITED STATES RESERVED IN PATENT FROM THE UNITED STATES OF AMERICA RECORDED SEPTEMBER 11, 1907 IN BID FROM BOOK 1 AT PAGE 230 LOCATION UNDERLAIN.
 - EASEMENT, INCLUDING THE TERMS, COVENANTS AND PROVISIONS AS MAY BE CONTAINED THEREIN, AS GRANTED/RESERVED TO THE TOWN OF MEETEETSE FOR A WATER LINE BY INSTRUMENT RECORDED OCTOBER 24, 1921 IN BOOK 865 AT PAGE 654, VARIABLE WIDTH.
 - SUBSEQUENTLY TERMINATED AND REINDEMENT BY THE TERMINATION AND REINDEMENT AGREEMENT RECORDED MAY 26, 2013 IN DOCUMENT NO. 2013-2112.
 - UNREVOKED EASEMENT, INCLUDING THE TERMS, COVENANTS AND PROVISIONS AS MAY BE CONTAINED THEREIN, AS GRANTED/RESERVED TO SHOBOHE RIVER POWER, INC. DATED JULY 20, 1983.
 - ASSIGNMENT OF SAID EASEMENT TO PACIFICORP BY INSTRUMENT RECORDED MAY 1, 1986 IN RECORD/PLAT BOOK 227 AT PAGE 380.
 - CLASSIFICATION OF EASEMENT RECORDED AUGUST 6, 1989 IN DOCUMENT NO. 1989-2415 LOCATION UNDERLAIN.
 - EASEMENT, INCLUDING THE TERMS, COVENANTS AND PROVISIONS AS MAY BE CONTAINED THEREIN, AS GRANTED/RESERVED TO BIG HORN RURAL ELECTRIC COMPANY FOR AN ELECTRIC TRANSMISSION AND/OR DISTRIBUTION LINE ON SYSTEM BY INSTRUMENT RECORDED JULY 20, 1989 IN DOCUMENT NO. 1989-2533 LOCATION UNDERLAIN.
 - EASEMENT, INCLUDING THE TERMS, COVENANTS AND PROVISIONS AS MAY BE CONTAINED THEREIN, AS GRANTED/RESERVED TO BIG HORN RURAL ELECTRIC COMPANY FOR AN ELECTRIC TRANSMISSION AND/OR DISTRIBUTION LINE ON SYSTEM BY INSTRUMENT RECORDED JANUARY 26, 2002 IN DOCUMENT NO. 2002-086 LOCATION UNDERLAIN.
 - EASEMENT, INCLUDING THE TERMS, COVENANTS AND PROVISIONS AS MAY BE CONTAINED THEREIN, AS GRANTED/RESERVED TO PANGLOSS RANCH, LLC FOR A ROAD BY INSTRUMENT RECORDED APRIL 26, 2004 IN DOCUMENT NO. 2004-2004, 20 FEET WIDE.
 - SUBSEQUENTLY TERMINATED BY THE TERMINATION OF EASEMENT DATED DECEMBER 12, 2013 BY THE RECORDING RANCH, LLC AND K & B, LLC TO BE RECORDED IN THE OFFICE OF THE PARK COUNTY CLERK AND RECORD AT A LATER DATE.

LEGEND

- 5/8" REBAR WITH 2" ALUM. CAP SET ○
- REBAR WITH ALUM. CAP FOUND —○
- BRASS CAP FOUND ●
- HIGHWAY MOUNDING FOUND —●
- BOUNDARY OF GOULD SS-218 —○—○
- RECORD DIMENSIONS SHOWN THIS []
- HIGHWAY RECORD DIMENSIONS SHOWN THIS []



PLAN



DE-ANNEXATION AND VACATION OF A PORTION OF LOT 8
OF THE EQUESTRIAN ESTATES SUBDIVISION
FROM THE TOWN OF MEETEETSE

AND
AMENDED EQUESTRIAN ESTATES SUBDIVISION (LOT 8)
IN THE TOWN OF MEETEETSE

AND
GOULD SS-218

LOCATED IN THE SE1/4NE1/4 SECTION 8 AND THE SW1/4NW1/4 SECTION 9,
T. 48 N., R. 100 W., 6TH P.M., PARK COUNTY, WYOMING (RESURVEY)



HOLS BROUGH AND COMPANY
Surveying Engineers & Land Surveyors
1402 Durbin Ave.
Cody, Wyoming 82401 (307) 587-6201

JANUARY 2024

BOOK 200
PLAT 00019113-000-13-006 P.004, 014

REVISION	DATE