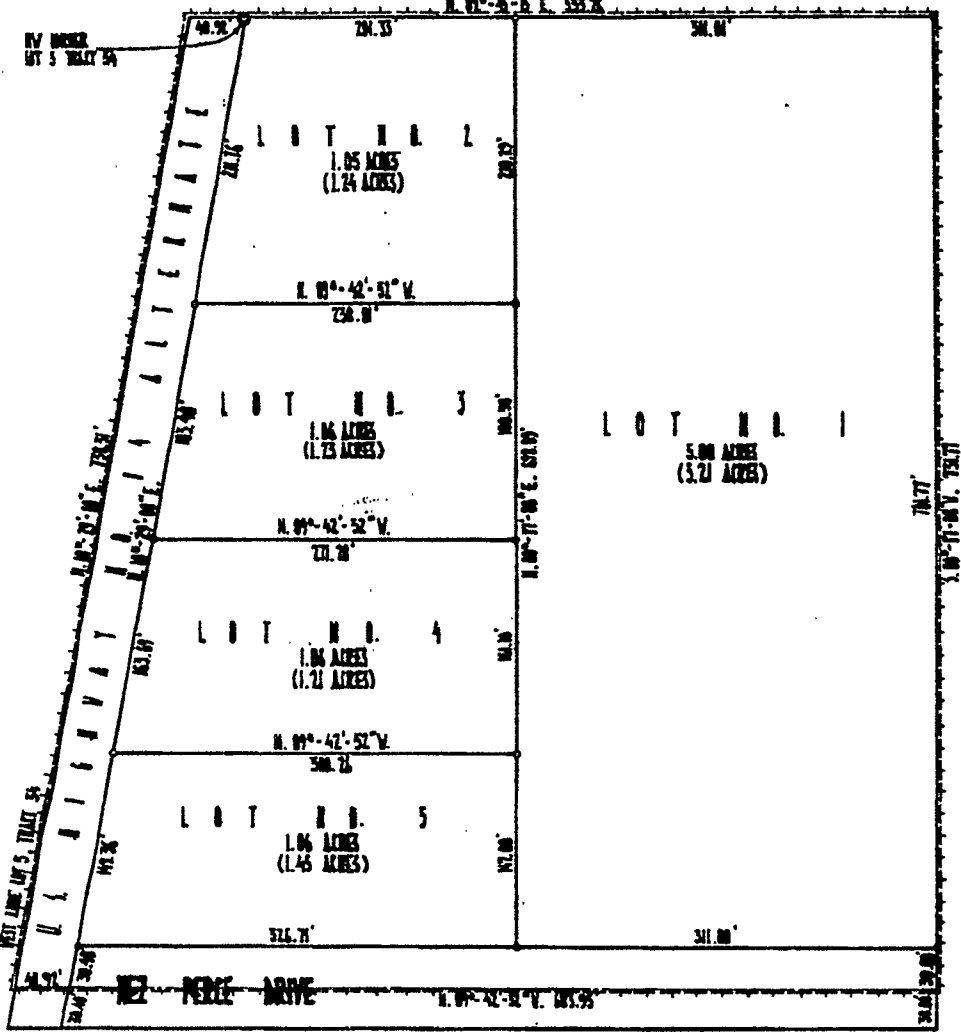


State of Wyoming,
County of Park, } ss.
This instrument was filed for record
on the 4 day of Sept.
1977 at 3:00 o'clock P.M., and
duly recorded in Book 0
records on page 63
Carole E. Larson
Register of Deeds
By Robert U. Bender
Deputy
No. 151252 Fee, \$25.00



NO PROPOSED DOMESTIC WATER SOURCE

T. 53 N., R. 101 W.



LEGEND

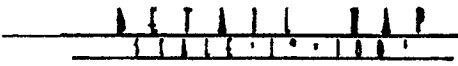
U.S.A. PIPE CORNERS FOUND DURING THIS SURVEY SHOWN THIS
 1/2" x 1/2" GALVANIZED IRON PIPE CORNERS FOUND DURING THIS SURVEY SHOWN THIS
 1/2" x 1/2" GALVANIZED IRON PIPE CORNERS SET DURING THIS SURVEY SHOWN THIS
 BOUNDARY OF HEART MOUNTAIN SUBDIVISION NO. 2 SHOWN THIS
 WEST LIT ALLEGE (SUBV) THIS
 ALLEGE TO (E) BOUNDARY BOUNDARY SHOWN THIS

APPROVALS

APPROVED THIS 4 DAY OF Sept 1977 BY THE COMMISSIONERS OF
 PARK COUNTY, WYOMING, SUBJECT TO THE PROVISIONS OF SECTION 5 OF THE PARK
 COUNTY POLICY ON THE APPROVAL OF SUBDIVISION AND DOMESTIC PLANS AS ADOPTED
 AUGUST 7, 1962.

James E. Blackham
CHAIRMAN OF COMMISSIONERS

ATTEST: Carole E. Larson
COUNTY CLERK



STATE OF WYOMING } ss.
COUNTY OF PARK

WE, MAIANE WILHE AND ELIZABETH WILHE, WIFE AND WIFE, DO HEREBY CERTIFY THAT WE ARE
 THE OWNERS OF LOT NO. 1 AND LOT NO. 2 OF THE HEART MOUNTAIN ESTATES SUBDIVISION IN T. 53 N., R. 101 W.,
 OF THE SIXTH PRINCIPAL MERIDIAN, PARK COUNTY, WYOMING.

THAT WE HAVE CAUSED SAID DESCRIBED LANDS TO BE SURVEYED AND PLATTED AS SHOWN HEREON;
 THAT THE ABOVE DESCRIBED OR FOREGOING SUBDIVISION AS APPEARS ON THIS PLAN IS WITH THE FREE CONSENT
 AND IN ACCORDANCE WITH THE DESIRES OF THE UNDISBURSED OWNERS AND PROPRIETORS AND SHALL BE KNOWN AS
 HEART MOUNTAIN ESTATES NO. 2; AND THAT WE HEREBY DEMAND AND SET APART THE ESTATES AS SHOWN
 HEREON TO THE USE OF THE GENERAL PUBLIC FOREVER.

WE HEREBY RELEASE AND REIMBURSE ALL RIGHTS OF INTEREST.
 IN WITNESS WHEREOF, WE HAVE HERETOBY SET OUR HANDS THIS 9th DAY OF JANUARY, 1977.

Maiane Wilhe
MAIANE WILHE AKA MAIANE EARL WILHE

Elizabeth Wilhe
ELIZABETH WILHE AKA ELIZABETH ANN WILHE

STATE OF WYOMING } ss.
COUNTY OF PARK

THE FOREGOING INSTRUMENT WAS ACKNOWLEDGED BEFORE ME BY MAIANE WILHE AND ELIZABETH
 WILHE THIS 9th DAY OF JANUARY, 1977, WITHOUT MY HAND AND OFFICIAL SEAL.

MY COMMISSION EXPIRES Nov 7, 1977 NOTARY PUBLIC

Donald J. Livingston



STATE OF WYOMING } ss.
COUNTY OF PARK

I, WESLEY V. REED, OF THE STATE OF WYOMING, HEREBY CERTIFY THAT ON JANUARY 2, 1977,
 THE HEART MOUNTAIN ESTATES NO. 2 WAS SURVEYED UNDER MY DIRECTION AND IS CORRECTLY DESCRIBED IN THE
 CERTIFICATE OF DEDICATION; THAT THE SAME IS CORRECTLY SHOWN ON THIS PLAN WHICH IS MADE TO THE SCALE
 INDICATED; DIMENSIONS ARE GIVEN IN FEET AND DECIMALS AND ANY SURPLUS OR DEFICIENCY EXISTING IS DISTRIBUTED
 PROPORTIONATELY IN PROPORTION TO THE PLAT DIMENSIONS.

WYOMING MEASUREMENT NO. 537 I.S.

Wesley V. Reed
WESLEY V. REED

PLAN SHOWING
HEART MOUNTAIN ESTATES NO. 2
 A SUBDIVISION OF
LOTS 1 & 2 OF HEART MOUNTAIN ESTATES
 PREPARED BY
ENGINEERING ASSOCIATES - CONY, WYOMING
CONSULTING ENGINEERS & SURVEYORS
 JANUARY, 1977