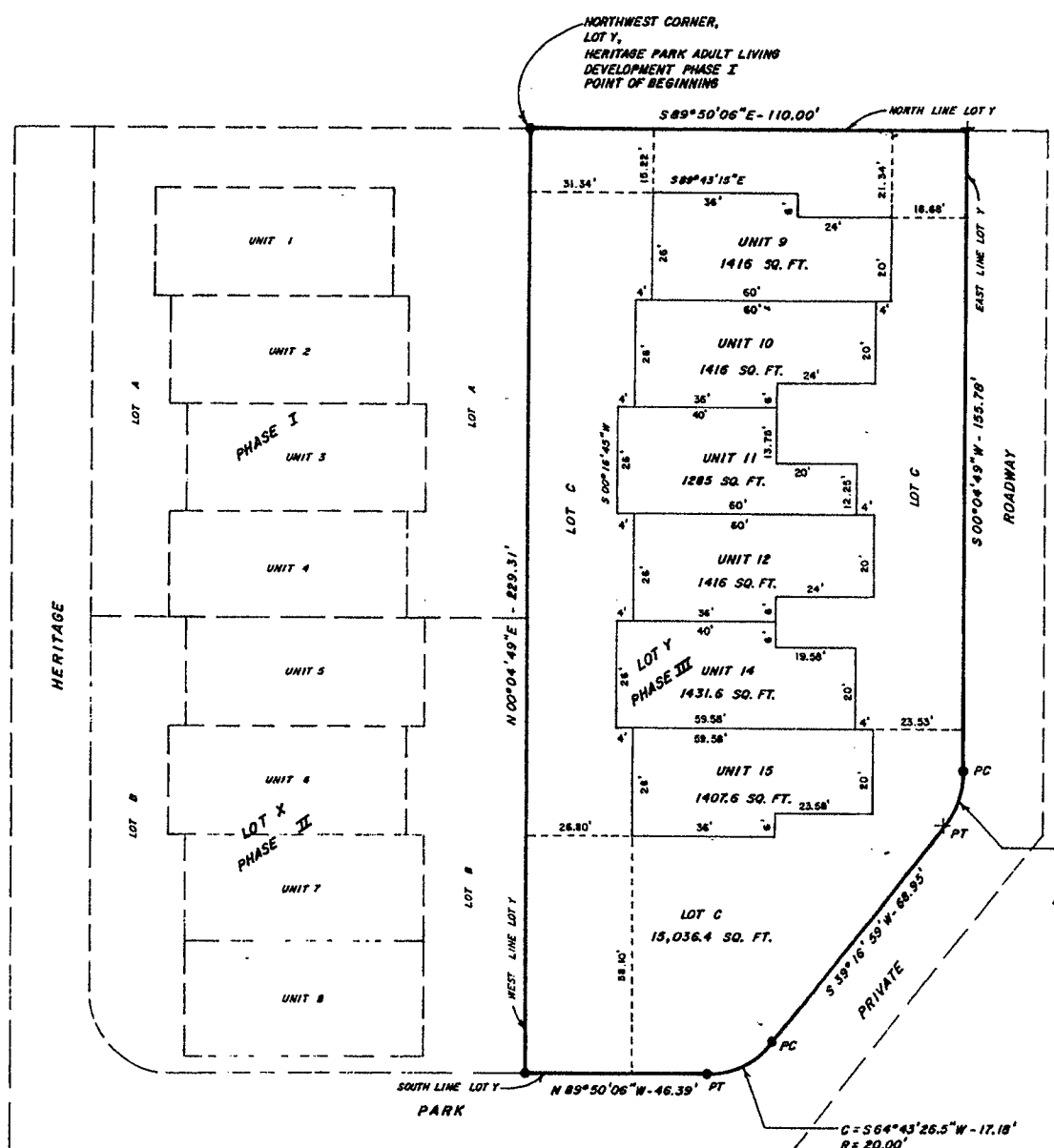


AVENUE 6



LEGEND:  
 ● - 2" ALUMINUM CAP SET, PE L3 2454 INSCRIBED  
 + - CHISELED IN CONCRETE  
 (17.18') - RECORDED INFORMATION

NOTE:  
 1) THERE IS NO UNIT 13  
 2) LOT C IS COMMON AREA  
 3) CORNERS OF UNITS 9 THROUGH 15 ARE BUILDING FOUNDATION CORNERS  
 4) LANDS WITHIN THIS PLATTED AREA ARE ZONED GENERAL RESIDENTIAL.

INBERG - MILLER ENGINEERS  
 124 EAST MAIN STREET  
 RIVINGTON, WYOMING 82501-4597  
 (307) 856-8126  
 DRAWN BY RUTH S. FULLER  
 02-2706-72 BOOK 406 8/27/92

SURVEYOR'S STATEMENT

I, Howard M. Johnson, a Professional Engineer and Land Surveyor of the State of Wyoming, do hereby state that this replat is a true, complete and correct representation of Lot Y, Heritage Park Adult Living Development Phase I, a subdivision of Lot 33, American Park Subdivision, City of Powell, County of Park, Wyoming containing 0.5374 acres, more or less; that this plat was prepared from notes taken during an actual survey made under my direction by Thomas E. Anselm during July, 1992 and from information shown on the Plat of Heritage Park Adult Living Development Phase I as recorded; that the names of all streets, roads, easements and other lands dedicated to the public use and the numbers of all lots are as shown hereon; and all data shown from which to make future resurveys.

In witness whereof, I have set my hand and seal this 21st day of August, 1992.

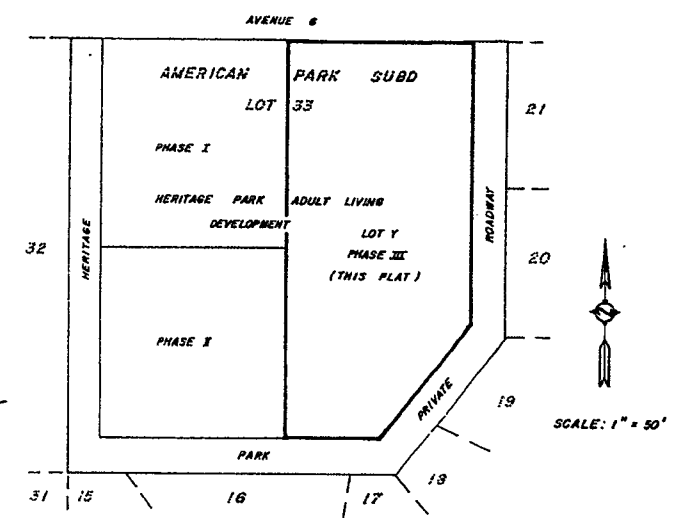


Subscribed and sworn to before me this 21st day of August, 1992 by Howard M. Johnson.



*Ruth S. Fuller*  
 Notary Public

LOCATION MAP



CERTIFICATE OF OWNER

We, C. Dean Roberts and Elizabeth A. Roberts, husband and wife hereby state that we are the owners of a parcel of land being Lot Y of Heritage Park Adult Living Development Phase I, a portion of Lot 33, American Park Subdivision to the City of Powell, Park County, Wyoming, more particularly described as follows: Beginning at the Northwest corner of Lot Y, said Heritage Park Adult Living Development Phase I; thence, S 89°50'06" E along the north-line of said Lot Y, 110.0 feet; thence, S 00°04'49" W along the east line of said Lot Y, 155.78 feet to a point of curvature; thence along a curve to the right, 13.68 feet (recorded as 17.18 feet), said curve having a radius of 20.00 feet with a delta angle of 39°12'10" (recorded as 49°12'10") and a chord which bears S 19°40'54" W, 13.42 feet to a point of tangency; thence, S 39°16'59" W, 68.95 feet to a point of curvature; thence along a curve to the right, 17.76 feet, said curve having a radius of 20.00 feet with a delta angle of 50°52'35" and a chord which bears S 64°43'26.5" W, 17.18 feet to a point of tangency; thence, W 89°50'06" W along the south line of said Lot Y, 46.39 feet; thence, N 00°04'49" E along the west line of said Lot Y, 229.31 feet to the point of beginning of this description, containing 0.5374 acres, more or less and subject to all easements, rights-of-way and restrictions of record; that we caused the lands as shown on the attached map to be surveyed, divided, mapped and dedicated as represented on said map to be known as Heritage Park Adult Living Development Phase I, a subdivision of Lot 33, American Park Subdivision, City of Powell, County of Park, Wyoming, and is with the free consent and in accordance with the desires of the undersigned owners.

*C. Dean Roberts*  
 C. Dean Roberts

*Elizabeth A. Roberts*  
 Elizabeth A. Roberts

STATE OF WYOMING }  
 COUNTY OF PARK } SS

The foregoing was acknowledged before me this 18th day of August, 1992 by C. Dean Roberts and Elizabeth A. Roberts.

My commission expires 2/19/95

*Ray Howard*  
 Notary Public

PLANNING AND ZONING COMMISSION APPROVAL

This Plat approved by the City of Powell, Wyoming Planning and Zoning Commission this 12th day of August, 1992.

ATTEST: *Vivian S. Davis* Secretary  
*John A. Campbell* Chairman

CITY OF POWELL APPROVAL

This Plat approved by the City Council of the City of Powell, Wyoming, this 17th day of August, 1992.

ATTEST: *George R. Busboom* City Clerk  
*Richard Johnson* Mayor

CLERK AND RECORDER'S CERTIFICATE

This plat was filed for record in the Office of the Clerk and Recorder of Park County, Wyoming at 3:45 o'clock P.M., August 27, 1992 and is duly recorded in Book F Page 71 of Plats. 303774 Park County Clerk MARIE FONTAINE

By: *Marie Fontaine*  
 Deputy

HERITAGE PARK  
 ADULT LIVING DEVELOPMENT  
 PHASE III

A SUBDIVISION OF LOT Y  
 HERITAGE PARK ADULT LIVING DEVELOPMENT  
 PHASE I  
 POWELL, WYOMING