

**APPROVALS**

**CITY PLANNING AND ZONING BOARD**  
 Approved this 27 day of JUNE, 1995 by the City Planning and Zoning Board, Cody, Wyoming.  
 BY CHAIRMAN: Larry Jensen  
 Mayor

**APPROVAL**  
 Approved this 17 day of MARCH, 1995 by the City Council of Cody, Wyoming.  
 BY: Jack T. Skates  
 Mayor  
 ATTEST: James S. Smiley  
 City Clerk

STATE OF WYOMING } SS  
 County of Park }  
 The foregoing approval was acknowledged before me by Jack T. Skates, Mayor and James S. Smiley, City Clerk, this 17 day of MARCH, 1995.  
 Witness my hand and official seal.  
Theresa J. Kossely  
 Notary Public  
 My commission expires 11-24-98

In witness whereof I have hereunto set my hand this 19 day of DECEMBER, 1995.  
 HOLM VIEW ADDITION, L.C.  
 Cody, Wyoming  
 BY: Robert W. Frisby  
 Robert W. Frisby, Manager

STATE OF ARIZONA } SS  
 County of Maricopa }  
 The foregoing Certificate of Dedication was acknowledged before me by Robert W. Frisby, Manager of Holm View Addition, L.C. this 19 day of DECEMBER, 1995.  
 Witness my hand and official seal.  
James E. McKeown  
 Notary Public  
 My commission expires: 6-17-97

STATE OF WYOMING } SS  
 County of Park }  
 The foregoing certificate was acknowledged before me this 22 day of DECEMBER, 1995 A.D.  
 Witness my hand and official seal.  
Mary C. Wiener  
 Notary Public  
 My commission expires: Sept. 26, 1996

**CERTIFICATE OF DEDICATION**

STATE OF WYOMING } SS  
 County of Park }  
 We, the undersigned, hereby certify that we are the Owners and Proprietors of the following property:  
 A parcel of land within the south half northeast quarter (S1/2 NW1/4) of Section 34, Township 53 North, Range 101 West of the Sixth Principal Meridian, Park County, Wyoming according to the Original Government Survey, said Section 34 being identical to Tract 70 of said township and range according to the Government Survey, said parcel being more particularly described as follows:  
 Beginning at the northeast corner of said S1/2 NW1/4 Tract 70; thence S. 89°47'42" W., along the north line of said S1/2 NW1/4 for a distance of 804.26 feet, more or less, to the southwest corner of Lot 8, Block 3 of Sandy's Subdivision; thence S. 0°12'11" E. for a distance of 80 feet; thence S. 22°03'47" E. for a distance of 116.52 feet; thence S. 67°56'13" W. for a distance of 2031.82 feet, more or less, to a point on the west line of said S1/2 NW1/4; thence S. 0°09'47" W., along said west line for a distance of 323.38 feet to a point on the north line of Sheridan Avenue; thence N. 89°49'00" E., along said north line for a distance of 2864.85 feet, more or less, to a point on the east line of said S1/2 NW1/4; thence N. 00°52'13" W., along said east line for a distance of 1287.87 feet, more or less, to the point of beginning, said parcel containing 52.07 acres, more or less.

That we have caused said described land to be surveyed and platted as shown hereon as the Holm View Addition No. 1 located within the City of Cody; that the subdivision as appears on this plat is with the free consent and in accordance with the desires of the undersigned owners and proprietors; and that we hereby dedicate and set apart the street right-of-ways, utility easements and public lands shown hereon along with other easements and purposes so noted hereon to the City of Cody for the public use. We hereby release and relinquish all rights of homestead.

In witness whereof, we have hereunto set our hand this 22 day of DECEMBER, 1995.

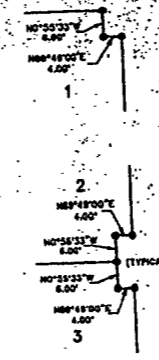
HOLM VIEW ADDITION, L.C.  
 Cody, Wyoming  
 BY: Robert W. Frisby  
 Gen. A. Holm, Manager  
Paul B. Sandbak, Manager

STATE OF WYOMING } SS  
 County of Park }  
 The foregoing Certificate of Dedication was acknowledged before me by Glen A. Holm and Paul B. Sandbak, Managers of Holm View Addition, L.C. this 22 day of DECEMBER, 1995.  
 Witness my hand and official seal.  
Mary C. Wiener  
 Notary Public  
 My commission expires: Sept. 26, 1996

**CERTIFICATE OF SURVEYOR**

STATE OF WYOMING } SS  
 County of Park }  
 I, Roy R. Holm, a Professional Registered Land Surveyor registered in the State of Wyoming by Registration Number 2899 P.E. AND L.S. hereby certify:  
 THAT between June, 1995 and August, 1995 the Holm View Addition No. 1, shown hereon was surveyed under my direction;  
 THAT the land surveyed is correctly described in the owner's Certificate of Dedication, and this plat accurately shows the correct location and dimensions of the lots, easements, streets and other features of said subdivision;  
 THAT the requirements of W.S. 36-11-101 through 36-11-110 were complied with and monuments and lot corners shown and described hereon were actually set;  
 THAT all elements of the survey close to an accuracy of one part in five thousand or better and dimensions of lots are given in feet and decimals of a foot, any surplus or deficiency is distributed uniformly in proportion to the measurements shown on this plat;  
 THAT the south line of the S1/2 NW1/4 of tract 70 T.53 N., R.101 W. of the 6th P.M. Meridian, bearing N 89°49'00" E. was used as the bearing base for all bearings surveyed and shown on this plat.

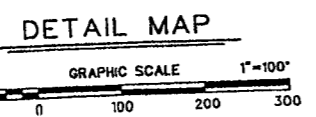
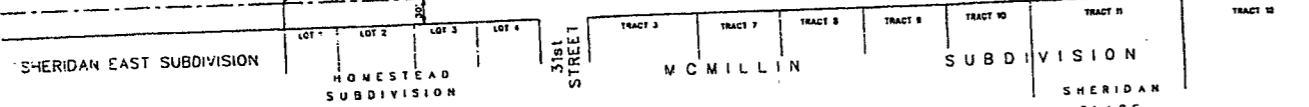
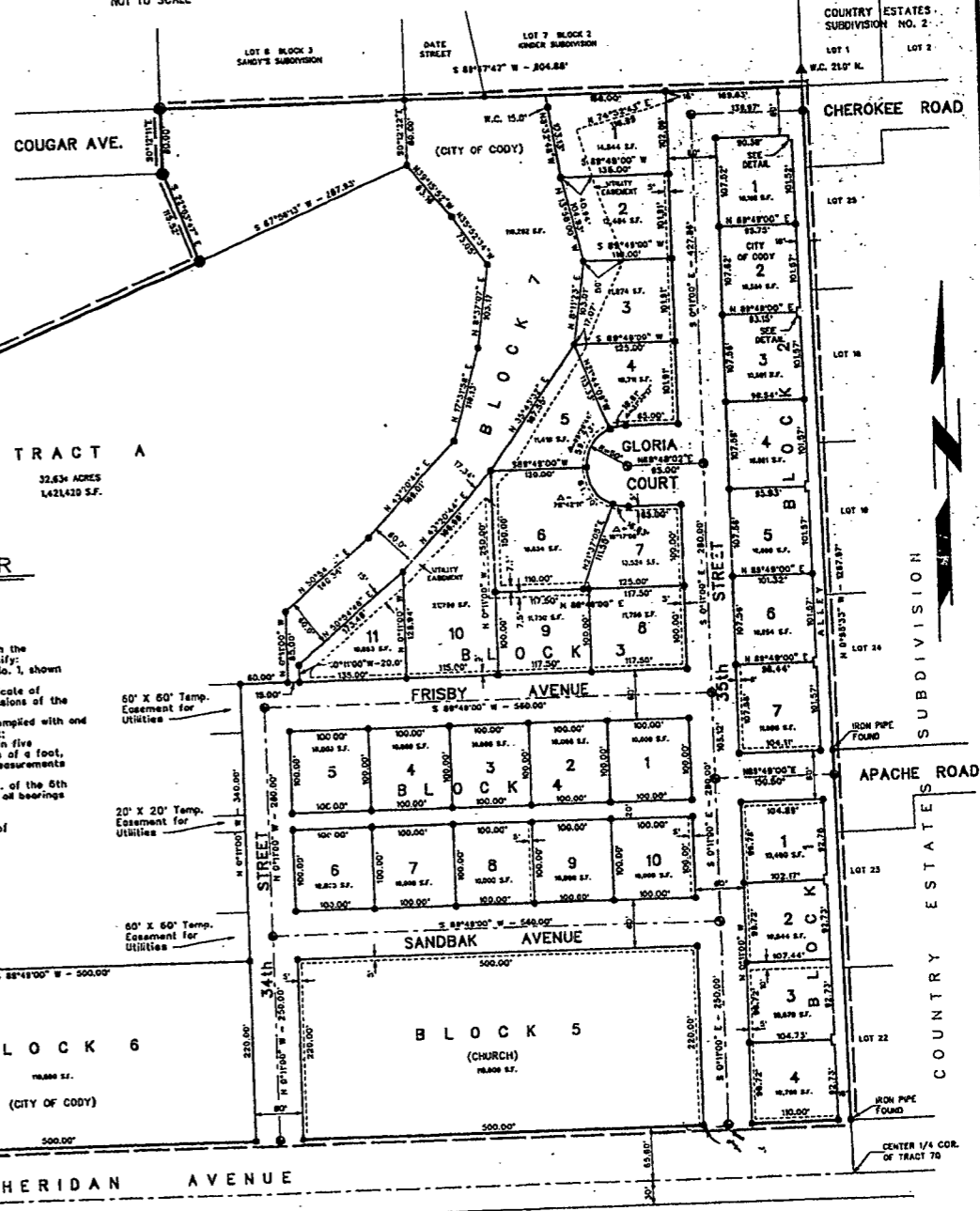
In witness whereof I have set my hand and seal this 22 day of DECEMBER, 1995 A.D.  
Roy R. Holm  
 Wyoming Registration No. P.E. & L.S. 2899



**LEGEND**

- Brass cap found in place
- Iron pipe found in place
- 2" G.I.P. w/screw found
- 3/8" x 24" rebar with alum. cap set
- 2" x 30" G.I.P. with brass cap set in concrete
- 5/8" x 24" rebar w/diam. cap set when streets are constructed
- Dimensions of record shown thus
- Dimensions obtained this survey shown thus
- Utility easement shown thus
- Subdivision boundary shown thus

**LOT DETAILS**  
NOT TO SCALE



**COUNTY CLERK'S CERTIFICATE**

This plat was filed for the public record in the Office of the Clerk, Park County, Wyoming, at 1:45 o'clock P.M. on the 6 day of MARCH, 1995 A.D., and is duly recorded in Book E, Page Number 112.  
MARIE FONTAINE  
 Park County Clerk  
 BY: Mary Col. Lacey  
 Deputy

**PLAT SHOWING  
HOLM VIEW ADDITION NO. 1  
WITHIN THE CITY OF CODY, WYOMING**

**HOLM, BLOUGH AND COMPANY**  
 Consulting Engineers & Land Surveyors  
 1241 Sheridan Ave.  
 P.O. Box 1748  
 Cody, Wyoming 82414

BOOK  
 239, 242, 334  
 JOB 84-81F.COD

NOVEMBER, 1995