

VICINITY MAP
SCALE: 1" = 500'

CERTIFICATE OF DEDICATION

STATE OF WYOMING } SS
County of Park

We, the undersigned, hereby certify that we are the Owners and Proprietors of the following property:

A parcel of land within Tract A of the Holm View Addition No. 1 in Tract 70, Township 53 North, Range 101 West of the 6th P.M., City of Cody, Park County, Wyoming according to the Government Resurvey; said parcel being more particularly described as follows:

Beginning at a point on the south line of said Tract A, said point being S. 89°49'00" W. a distance of 80.00 feet from the southwest corner of Block 6 of said Holm View Addition No. 1; thence S. 89°49'00" W. along said south line for a distance of 380.00 feet; thence N. 00°11'00" W. parallel to the west line of said Block 6 for a distance of 220.00 feet; thence N. 89°49'00" E. parallel to the south line of said Tract A for a distance of 380.00 feet to a point located S. 89°49'00" W. a distance of 80.00 feet from the northwest corner of said Block 6; thence S. 00°11'00" E. parallel to the west line of said Block 6 for a distance of 220.00 feet, more or less, to the point of beginning, said parcel containing a net area of 1.92 acres, more or less, and said parcel being subject to any and all easements and/or rights of way which legally exist.

That we have caused said described land to be surveyed and plotted as shown hereon as the Holm View Addition No. 2 located within the City of Cody; that the subdivision as appears on this plat is with the free consent and in accordance with the desires of the undersigned owners and proprietors; and that we hereby dedicate and set apart the street right-of-ways, utility easements and public lands shown hereon along with other easements and purposes so noted hereon to the City of Cody for the public use. We hereby release and relinquish all rights of homestead.

In witness whereof we have hereunto set our hand this 7th day of November, 1997.

HOLM VIEW ADDITION, L.C.
Cody, Wyoming
BY: Glen A. Holm, Manager
BY: Robert W. Frisby, Manager
BY: Paul B. Sandbak, Manager

STATE OF WYOMING } SS
County of Park

The foregoing Certificate of Dedication was acknowledged before me by Glen A. Holm, Paul B. Sandbak and Robert W. Frisby, Managers of Holm View Addition, L.C. this 7th day of November, 1997.

Witness my hand and official seal.

Mary C. Wiener
Notary Public
My commission expires: September 26, 2000

LEGEND

- Brass cap found in place ⊙
- Rebar with alk. cap found in place ○
- 2" G.I.P. W/screw found ●
- 5/8" x 24" rebar with alk. cap set ▲
- 2" x 30" G.I.P. with brass cap set in concrete ⊕
- 5/8" x 24" rebar w/alk. cap set when streets are constructed ⊙
- Dimensions of record shown thus (S 74°42' W - 89L8)
- Dimensions obtained this survey shown thus S 74°42'10" W - 89L88
- Utility easement shown thus -----
- Holm View Addition No. 1 boundary shown thus -----

APPROVALS

CITY PLANNING AND ZONING BOARD

Approved this 2nd day of Sept, 1997 by the City Planning and Zoning Board, Cody, Wyoming.

BY CHAIRMAN: Larry Johnson

APPROVAL

Approved this 6th day of October, 1997 by the City Council of Cody, Wyoming.

BY: Jack T. Skates
Mayor

ATTEST: John W. Brown
City Clerk

COUNTY CLERK'S CERTIFICATE

This plat was filed for the public record in the Office of the Clerk, Park County, Wyoming, at 4:15 o'clock P. M. on the 21 day of November, 1997 A.D., and is duly recorded in Book E-17 Page Number 1997-6779

Marie Fontaine
Park County Clerk

BY: Susan Carter
Deputy

CERTIFICATE OF SURVEYOR

STATE OF WYOMING } SS
County of Park

I, Roy R. Holm, a Professional Registered Land Surveyor registered in the State of Wyoming by Registration Number 2889 P.E. AND L.S. hereby certify:

THAT on June 4, 1997 the Holm View Addition No. 2, shown hereon was surveyed under my direction;

THAT the land surveyed is correctly described in the owner's Certificate of Dedication, and this plat accurately shows the correct location and dimensions of the said subdivision;

THAT the requirements of W.S. 36-11-101 through 36-11-110 were complied with and monuments and lot corners shown and described hereon were actually set;

THAT all elements of the survey close to an accuracy of one part in five thousand or better and dimensions are given in feet and decimals of a foot, any surplus or deficiency is distributed uniformly in proportion to the measurements shown on this plat;

THAT the south line of the S1/2 NW1/4 of tract 70 T.53 N.R.101 W. of the 6th P.M. Resurvey, bearing N 89°49'00" E. was used as the bearing base for all bearings surveyed and shown on this plat.

In witness whereof I have set my hand and seal this 5th day of November, 1997 A.D.

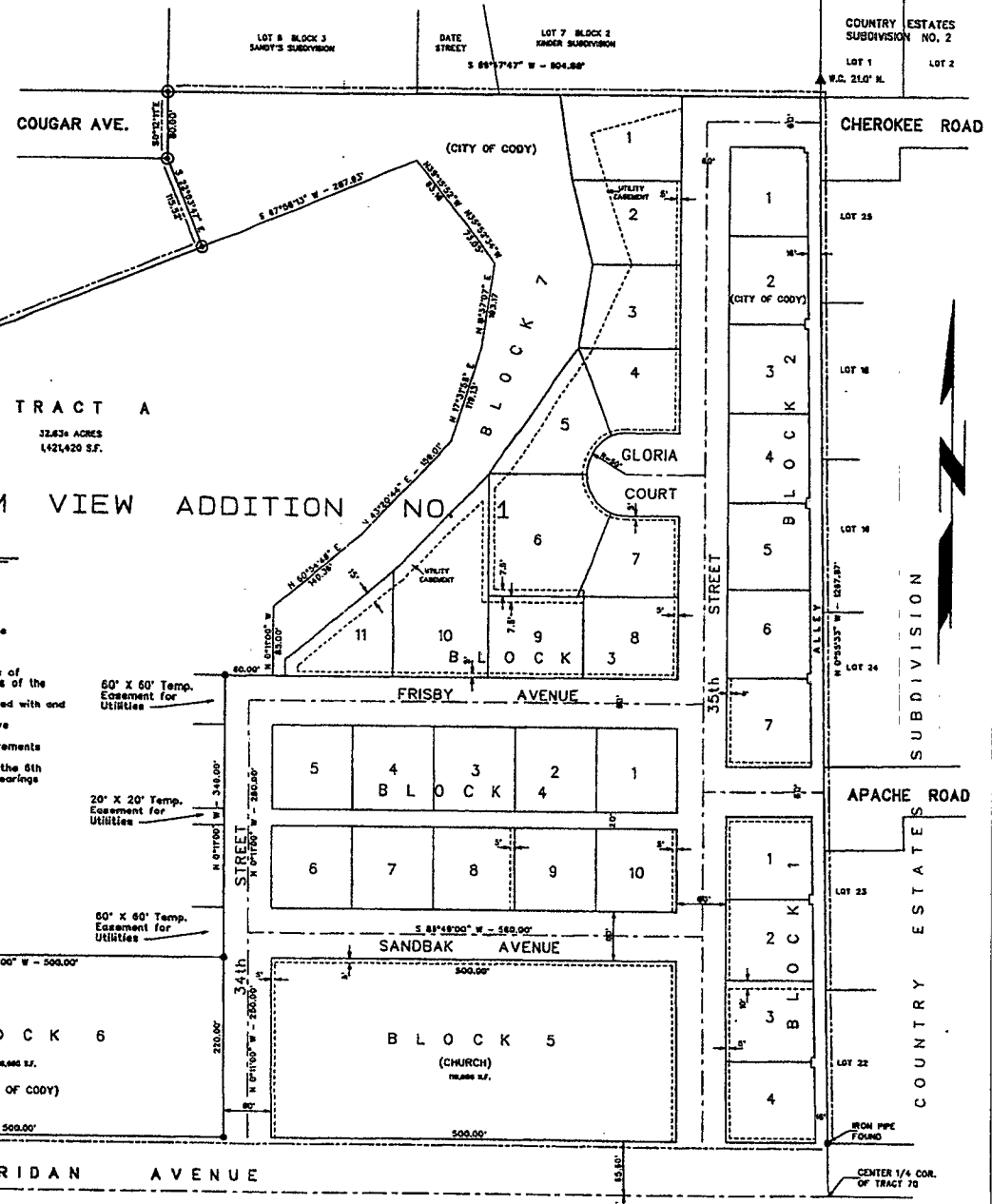
Roy R. Holm
Professional Engineer (Civil) & Land Surveyor
Wyoming Registration No. P.E. & L.S. 2889

STATE OF WYOMING } SS
County of Park

The foregoing certificate was acknowledged before me this 5th day of November, 1997 A.D.

Witness my hand and official seal.

Mary C. Wiener
Notary Public
My commission expires: Sept. 26, 2000



DETAIL MAP



**PLAT SHOWING
HOLM VIEW ADDITION NO. 2
WITHIN THE CITY OF CODY, WYOMING**

HOLM, BLOUGH AND COMPANY
Consulting Engineers & Land Surveyors
1241 Sheridan Ave.
P.O. Box 1748