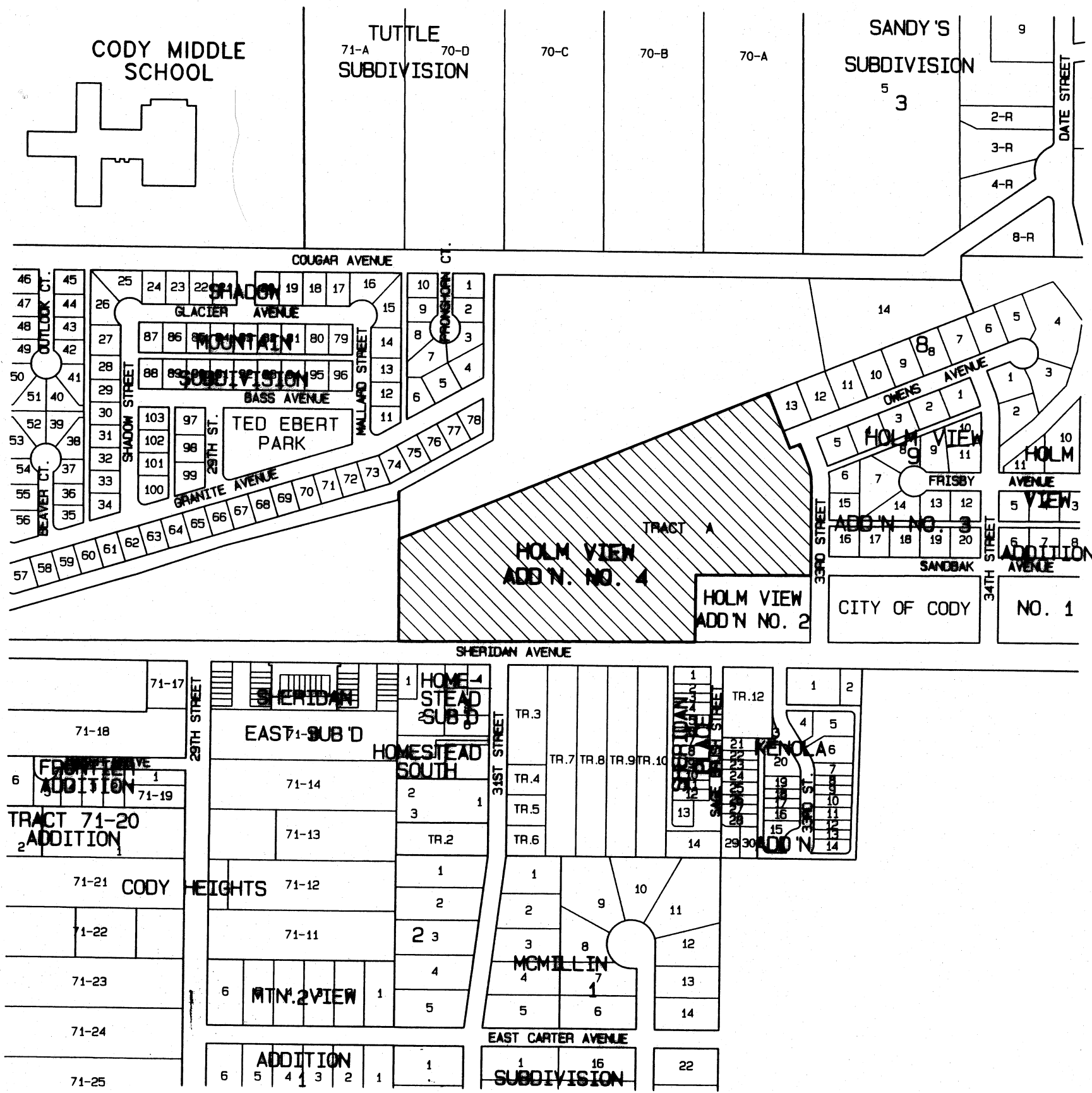
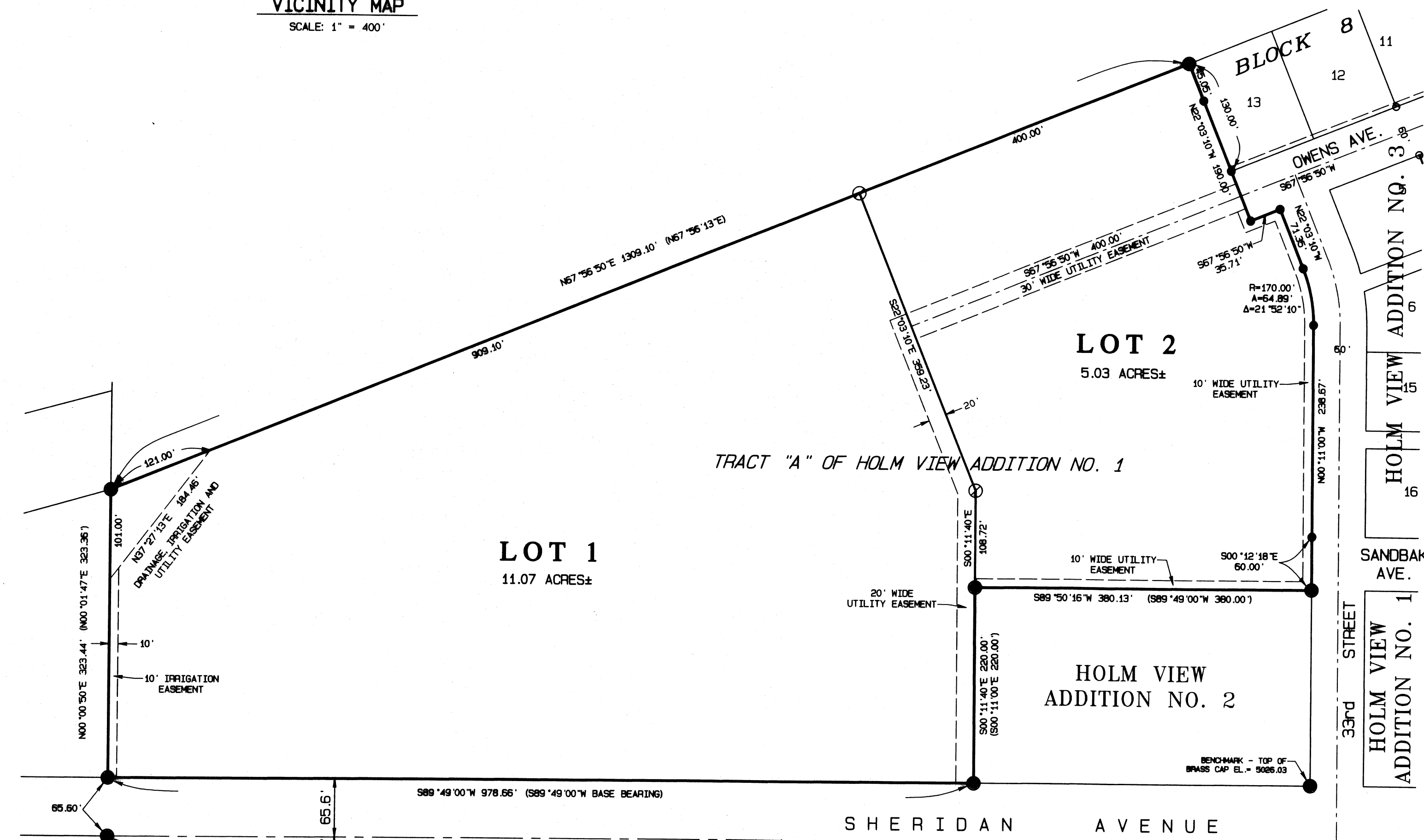
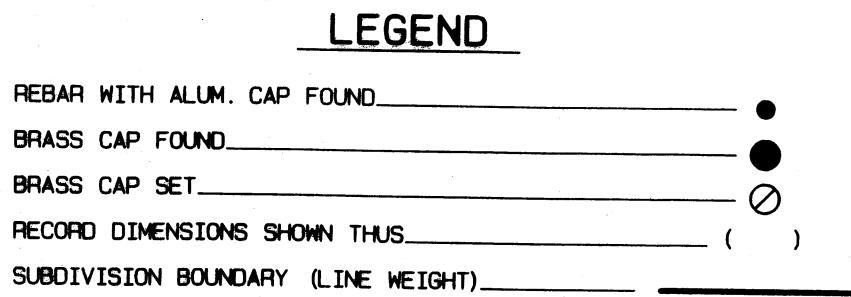


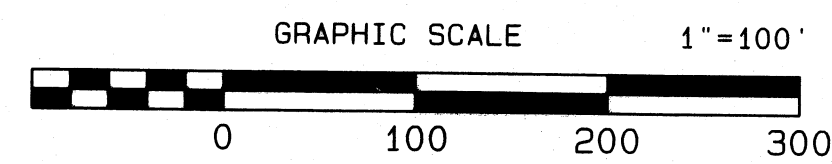
T.53 N., R.101 W.
(RESURVEY)



VICINITY MAP
SCALE: 1" = 400'



PLAN - HOLM VIEW ADDITION NO. 4



NOTES

1. HOLM VIEW ADDITION NO. 4 HAS BEEN APPROVED WITH TWO VARIANCES TO THE SUBDIVISION REGULATIONS. THESE VARIANCES ARE AS FOLLOWS:
 - A. THE SUBDIVISION HAS BEEN APPROVED WITHOUT ALLEYS.
 - B. THE SUBDIVISION HAS BEEN APPROVED WITHOUT CURB, GUTTER AND SIDEWALK ON SHERIDAN AVENUE.
2. BOTH LOTS ARE ZONED A.

RESPONSIBILITY NOTES

- A. FUTURE LOT OWNERS WILL BE RESPONSIBLE FOR INSTALLATION OF BACKFLOW PREVENTION DEVICES PURSUANT TO DEQ-W03 REQUIREMENTS IF THE LOTS ARE UTILIZED FOR COMMERCIAL PURPOSES.
- B. FUTURE LOT OWNERS ARE RESPONSIBLE FOR COMPLYING WITH CITY POLICY REGARDING ZERO INCREASE IN RUNOFF, SITE DEVELOPMENT PLANS AND GARBAGE COLLECTION PLANS.

APPROVALS

CITY PLANNING AND ZONING BOARD
APPROVED AS OF THE 11TH DAY OF JULY, 2006 BY THE CITY PLANNING AND ZONING BOARD, CODY, WYOMING.
Steve Miller
CHAIRMAN - STEVE MILLER

CITY COUNCIL APPROVAL
APPROVED AS OF THE 10TH DAY OF JULY, 2006 BY THE CITY COUNCIL OF CODY, WYOMING.
Roger Sedam
MAYOR - ROGER SEDAM
ATTEST: *Kelly Jensen*
ADMINISTRATIVE SERVICES DIRECTOR

STATE OF WYOMING }
COUNTY OF PARK }
THE FOREGOING APPROVAL WAS ACKNOWLEDGED BEFORE ME BY ROGER SEDAM, MAYOR AND KELLY JENSEN, ADMINISTRATIVE SERVICES DIRECTOR, THIS 19 DAY OF JULY, 2006.
WITNESS MY HAND AND OFFICIAL SEAL.
Vera G. Beerline
NOTARY PUBLIC
MY COMMISSION EXPIRES: July 9, 2008

RECORDER'S ACCEPTANCE

THIS PLAT WAS FILED FOR THE PUBLIC RECORD IN THE OFFICE OF THE CLERK, PARK COUNTY, WYOMING, AT 2:57 O'CLOCK P.M. ON THE 21ST DAY OF JULY, 2006 A.D., AND IS DULY RECORDED IN BOOK F PAGE NUMBER 131 2006-5645
Karen Carter
PARK COUNTY CLERK
BY: *Christine Eck*
DEPUTY

CERTIFICATE OF DEDICATION

STATE OF WYOMING }
COUNTY OF PARK }
WE, THE UNDERSIGNED, HEREBY CERTIFY THAT WE ARE THE OWNERS AND PROPRIETORS OF THE FOLLOWING DESCRIBED PROPERTIES:
A PARCEL OF LAND WITHIN TRACT A OF THE HOLM VIEW ADDITION NO. 1 IN TRACT 70, TOWNSHIP 53 NORTH, RANGE 101 WEST OF THE 6TH P.M., CITY OF CODY, PARK COUNTY, WYOMING ACCORDING TO THE SAID SUBDIVISION PLAT FILED IN PLAT BOOK F AT PAGE 139; SAID PARCEL IS ALL OF TRACT A OF THE HOLM VIEW ADDITION NO. 1 EXCEPTING THEREFROM HOLM VIEW ADDITION NO. 2 AND HOLM VIEW ADDITION NO. 3;
THAT WE HAVE CAUSED SAID PROPERTY TO BE SURVEYED AND PLATTED AS SHOWN HEREON AS THE HOLM VIEW ADDITION NO. 4 LOCATED WITHIN THE CITY OF CODY; THAT THE SUBDIVISION AS APPEARS ON THIS PLAT IS WITH THE FREE CONSENT AND IN ACCORDANCE WITH THE DESIRES OF THE UNDERSIGNED OWNERS AND PROPRIETORS; AND THAT WE HEREBY DEDICATE AND SET APART THE STREET RIGHT-OF-WAYS, UTILITY EASEMENTS SHOWN HEREON ALONG WITH OTHER EASEMENTS AND PURPOSES SO NOTED HEREON TO THE CITY OF CODY FOR THE PUBLIC USE. WE HEREBY RELEASE AND RELINQUISH ALL RIGHTS OF HOMESTEAD.
WE, THE UNDERSIGNED, ALL HEIRS AND/OR ASSIGNS ARE PROPONENTS FOR PARTICIPATING IN THE SUBDIVISION OF THE ABOVE DESCRIBED PROPERTY; AND BY THESE PRESENTS DO HEREBY AGREE TO PROMOTE AND PARTICIPATE IN AN IMPROVEMENT DISTRICT FOR CURB, GUTTER AND SIDEWALK ON SHERIDAN AVENUE WHEN DEEMED NECESSARY BY THE CITY OF CODY; AND FURTHER, THAT THIS LANGUAGE SHALL BE CONTAINED IN EACH AND ALL CONVEYANCES OF RECORD.
IN WITNESS WHEREOF WE HAVE HEREUNTO SET OUR HAND THIS 18TH DAY OF JULY, 2006.

HOLM VIEW ADDITION, L.C.
Cody, Wyoming
BY: *Glen A. Holm*
GLEN A. HOLM, MANAGER
BY: *Paul B. Sandbak Jr.*
PAUL B. SANDBAK JR., MANAGER
BY: *Gloria Frisby Hedderman*
GLORIA FRISBY HEDDERMAN, MANAGER

STATE OF WYOMING }
COUNTY OF PARK }
THE FOREGOING CERTIFICATE OF DEDICATION WAS ACKNOWLEDGED BEFORE ME BY GLEN A. HOLM, PAUL B. SANDBAK AND GLORIA FRISBY HEDDERMAN, MANAGERS OF HOLM VIEW ADDITION, L.C. THIS 18 DAY OF JULY, 2006. WITNESS MY HAND AND OFFICIAL SEAL.

Mary C. Wieman
NOTARY PUBLIC
MY COMMISSION EXPIRES: November 4, 2008

CERTIFICATE OF SURVEYOR

STATE OF WYOMING }
COUNTY OF PARK }
I, ROY R. HOLM, A PROFESSIONAL ENGINEER AND LAND SURVEYOR REGISTERED IN THE STATE OF WYOMING BY REGISTRATION NUMBER 2899 HEREBY CERTIFY:
THAT ON JANUARY 5, 2006, THE "HOLM VIEW ADDITION NO. 4", SHOWN HEREON WAS SURVEYED UNDER MY DIRECTION;
THAT THE LAND SURVEYED IS CORRECTLY DESCRIBED IN THE OWNER'S CERTIFICATE OF DEDICATION, AND THIS PLAT ACCURATELY SHOWS THE CORRECT LOCATION AND DIMENSIONS OF SAID SUBDIVISION;
THAT THE REQUIREMENTS OF N.S. 36-11-101 THROUGH 36-11-110 WERE COMPLIED WITH AND MONUMENTS AND LOT CORNERS SHOWN AND DESCRIBED HEREON WERE ACTUALLY SET;
THAT ALL ELEMENTS OF THE SURVEY CLOSE TO AN ACCURACY OF ONE PART IN FIVE THOUSAND OR BETTER AND DIMENSIONS ARE GIVEN IN FEET AND DECIMALS OF A FOOT, ANY SURPLUS OR DEFICIENCY IS DISTRIBUTED UNIFORMLY IN PROPORTION TO THE MEASUREMENTS SHOWN ON THIS PLAT.
IN WITNESS WHEREOF I HAVE SET MY HAND AND SEAL THIS 18 DAY OF JULY, 2006 A.D.
Roy R. Holm
HOLM, BLOUGH AND COMPANY
BY: ROY R. HOLM (AGENT)
WYOMING REGISTRATION NO. P.E. & L.S. 2899
STATE OF WYOMING }
COUNTY OF PARK }
THE FOREGOING CERTIFICATE WAS ACKNOWLEDGED BEFORE ME THIS 18 DAY OF JULY, 2006 A.D.
WITNESS MY HAND AND OFFICIAL SEAL.
Mary C. Wieman
NOTARY PUBLIC
MY COMMISSION EXPIRES: November 4, 2008

HOLM VIEW ADDITION, L.C.
CODY, WYOMING
FINAL PLAT SHOWING
HOLM VIEW ADDITION NO. 4
BEING PART OF
TRACT "A" OF HOLM VIEW ADDITION NO. 1
CITY OF CODY, WYOMING