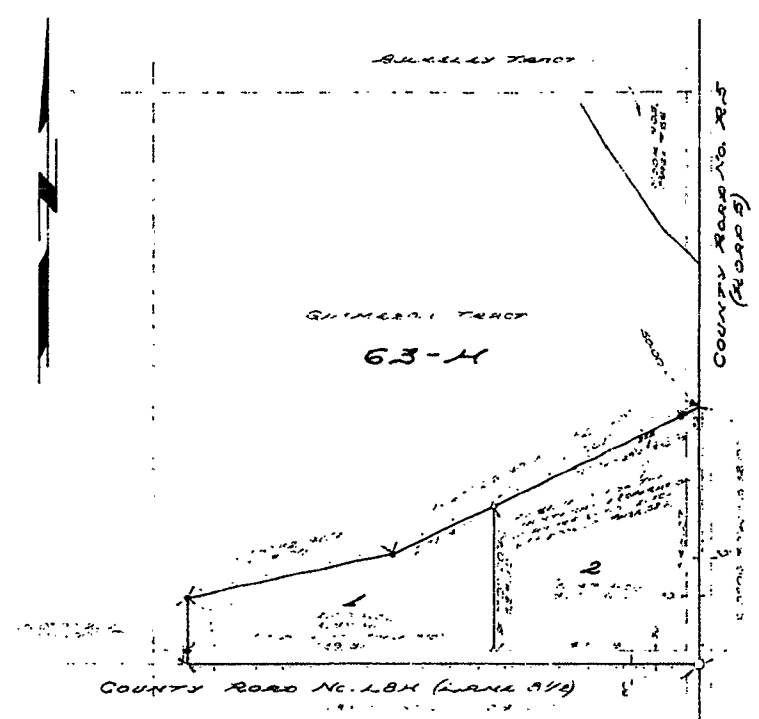


T. 55 N., R. 98 W.



SCALE: 1" = 200'

LEGEND

- 1. ... 2
- 2. ... 3
- 3. ... 4
- 4. ... 5
- 5. ... 6
- 6. ... 7
- 7. ... 8
- 8. ... 9
- 9. ... 10
- 10. ... 11
- 11. ... 12
- 12. ... 13
- 13. ... 14
- 14. ... 15
- 15. ... 16
- 16. ... 17
- 17. ... 18
- 18. ... 19
- 19. ... 20
- 20. ... 21
- 21. ... 22
- 22. ... 23
- 23. ... 24
- 24. ... 25
- 25. ... 26
- 26. ... 27
- 27. ... 28
- 28. ... 29
- 29. ... 30
- 30. ... 31
- 31. ... 32
- 32. ... 33
- 33. ... 34
- 34. ... 35
- 35. ... 36
- 36. ... 37
- 37. ... 38
- 38. ... 39
- 39. ... 40
- 40. ... 41
- 41. ... 42
- 42. ... 43
- 43. ... 44
- 44. ... 45
- 45. ... 46
- 46. ... 47
- 47. ... 48
- 48. ... 49
- 49. ... 50
- 50. ... 51
- 51. ... 52
- 52. ... 53
- 53. ... 54
- 54. ... 55
- 55. ... 56
- 56. ... 57
- 57. ... 58
- 58. ... 59
- 59. ... 60
- 60. ... 61
- 61. ... 62
- 62. ... 63
- 63. ... 64
- 64. ... 65
- 65. ... 66
- 66. ... 67
- 67. ... 68
- 68. ... 69
- 69. ... 70
- 70. ... 71
- 71. ... 72
- 72. ... 73
- 73. ... 74
- 74. ... 75
- 75. ... 76
- 76. ... 77
- 77. ... 78
- 78. ... 79
- 79. ... 80
- 80. ... 81
- 81. ... 82
- 82. ... 83
- 83. ... 84
- 84. ... 85
- 85. ... 86
- 86. ... 87
- 87. ... 88
- 88. ... 89
- 89. ... 90
- 90. ... 91
- 91. ... 92
- 92. ... 93
- 93. ... 94
- 94. ... 95
- 95. ... 96
- 96. ... 97
- 97. ... 98
- 98. ... 99
- 99. ... 100

NO PROPOSED PUBLIC SEWER DISPOSAL SYSTEM

CERTIFICATE OF DEDICATION

THE UNDERSIGNED, LAND SURVEYOR, DO HEREBY CERTIFY THAT THE ABOVE DESCRIBED LOT 63-M, BEING PART OF LOT 63, T. 55 N., R. 98 W., OF THE 6TH P.M., REBURY, PARK COUNTY, WYOMING, WAS LAYED OUT AND DEDICATED TO THE PUBLIC USE OF THE STATE OF WYOMING BY THE BOARD OF COUNTY COMMISSIONERS OF PARK COUNTY, WYOMING, ON THIS 15TH DAY OF MARCH, 1926.

SUBJECTIVE TO THE REVISIONS, DATED 10/15/26, AND 11/15/26, OF THE ORIGINAL PLAN, THE ABOVE DESCRIBED LOT 63-M, BEING PART OF LOT 63, T. 55 N., R. 98 W., OF THE 6TH P.M., REBURY, PARK COUNTY, WYOMING, WAS LAYED OUT AND DEDICATED TO THE PUBLIC USE OF THE STATE OF WYOMING BY THE BOARD OF COUNTY COMMISSIONERS OF PARK COUNTY, WYOMING, ON THIS 15TH DAY OF MARCH, 1926.

AS THESE CHANGES WERE MADE TO THE ORIGINAL PLAN AND MAP, THE BOARD OF COUNTY COMMISSIONERS OF PARK COUNTY, WYOMING, HAS APPROVED THE SAME, AND THE BOARD OF COUNTY COMMISSIONERS OF PARK COUNTY, WYOMING, HAS ORDERED THAT THE SAME BE RECORDED AS SUCH.

IN WITNESS WHEREOF, I, THE LAND SURVEYOR, HAVE HEREON SET MY HAND AND SEAL OF OFFICE AT PARK COUNTY, WYOMING, THIS 15TH DAY OF MARCH, 1926.

Anna Neil Kosta
 LAND SURVEYOR

STATE OF WYOMING
 COUNTY OF PARK

THE FOREGOING CERTIFICATE AND MAP HAVE BEEN RECORDED IN THE PUBLIC RECORDS OF THE COUNTY OF PARK, WYOMING, ON THIS 15TH DAY OF MARCH, 1926.

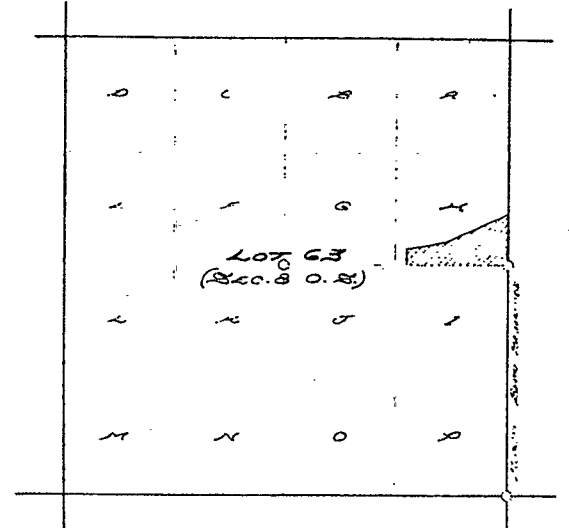
Anna Neil Kosta
 LAND SURVEYOR

BY COMMISSIONER: J. E. ...

SUBDIVISION PERMIT

A SUBDIVISION PERMIT IS HEREBY GRANTED TO THE ABOVE DESCRIBED LOT 63-M, BEING PART OF LOT 63, T. 55 N., R. 98 W., OF THE 6TH P.M., REBURY, PARK COUNTY, WYOMING, FOR THE PURPOSES OF THE STATE OF WYOMING, AS APPROVED.

Anna Neil Kosta
 LAND SURVEYOR



VICINITY MAP
SCALE: 1" = 1000'

CERTIFICATE OF SURVEYOR

I, THE LAND SURVEYOR, DO HEREBY CERTIFY THAT THE ABOVE DESCRIBED LOT 63-M, BEING PART OF LOT 63, T. 55 N., R. 98 W., OF THE 6TH P.M., REBURY, PARK COUNTY, WYOMING, WAS LAYED OUT AND DEDICATED TO THE PUBLIC USE OF THE STATE OF WYOMING BY THE BOARD OF COUNTY COMMISSIONERS OF PARK COUNTY, WYOMING, ON THIS 15TH DAY OF MARCH, 1926.

SUBJECTIVE TO THE REVISIONS, DATED 10/15/26, AND 11/15/26, OF THE ORIGINAL PLAN, THE ABOVE DESCRIBED LOT 63-M, BEING PART OF LOT 63, T. 55 N., R. 98 W., OF THE 6TH P.M., REBURY, PARK COUNTY, WYOMING, WAS LAYED OUT AND DEDICATED TO THE PUBLIC USE OF THE STATE OF WYOMING BY THE BOARD OF COUNTY COMMISSIONERS OF PARK COUNTY, WYOMING, ON THIS 15TH DAY OF MARCH, 1926.

AS THESE CHANGES WERE MADE TO THE ORIGINAL PLAN AND MAP, THE BOARD OF COUNTY COMMISSIONERS OF PARK COUNTY, WYOMING, HAS APPROVED THE SAME, AND THE BOARD OF COUNTY COMMISSIONERS OF PARK COUNTY, WYOMING, HAS ORDERED THAT THE SAME BE RECORDED AS SUCH.

IN WITNESS WHEREOF, I, THE LAND SURVEYOR, HAVE HEREON SET MY HAND AND SEAL OF OFFICE AT PARK COUNTY, WYOMING, THIS 15TH DAY OF MARCH, 1926.

Anna Neil Kosta
 LAND SURVEYOR

THE ABOVE DESCRIBED LOT 63-M, BEING PART OF LOT 63, T. 55 N., R. 98 W., OF THE 6TH P.M., REBURY, PARK COUNTY, WYOMING, WAS LAYED OUT AND DEDICATED TO THE PUBLIC USE OF THE STATE OF WYOMING BY THE BOARD OF COUNTY COMMISSIONERS OF PARK COUNTY, WYOMING, ON THIS 15TH DAY OF MARCH, 1926.

Anna Neil Kosta
 LAND SURVEYOR

PLAN SHOWING
 KOSTA SUBDIVISION
 BEING PART OF LOT 63-M
 IN LOT 63, T. 55 N., R. 98 W., OF THE 6TH P.M.,
 REBURY, PARK COUNTY, WYOMING
 REVISION DATE: _____

MARCH 15, 1926