

COUNTY CLERKS CERTIFICATE

THIS PLAT WAS FILED FOR THE PUBLIC RECORD IN THE OFFICE OF THE COUNTY CLERK OF PARK COUNTY, WYOMING, IN BOOK 8 PAGE NUMBER 1791 RECEPTION NUMBER 219681.

Doris Justice
COUNTY CLERK

CERTIFICATE OF SURVEYOR

STATE OF WYOMING }
COUNTY OF PARK }
I, DAVID L. BURKHAUER, A LAND SURVEYOR REGISTERED IN THE STATE OF WYOMING, DO HEREBY CERTIFY THAT THE PLAT, MAP AND DESCRIPTION HEREON SET FORTH IS A TRUE AND ACCURATE REPRESENTATION OF THE SURVEY HEREON MADE BY ME AND THAT THE SAME IS IN ACCORDANCE WITH THE PROVISIONS OF THE STATUTE OF THE STATE OF WYOMING, IN THAT RESPECT AS THE SAME RELATE TO THE LOCATION OF THE PLAT HEREON SET FORTH. I HAVE SET MY HAND AND SEAL TO THIS CERTIFICATE OF SURVEY ON THIS 5th DAY OF JUNE, 1984, A.D.



David L. Burkhauser
REGISTERED LAND SURVEYOR

STATE OF WYOMING }
COUNTY OF PARK }
THE FOREGOING CERTIFICATE WAS ACKNOWLEDGED BEFORE ME THIS 2nd DAY OF April, 1984 A.D.

WITNESS MY HAND AND OFFICIAL SEAL.
Donald J. Livingston
NOTARY PUBLIC
MY COMMISSION EXPIRES April 13, 1985

COUNTY COMMISSIONERS CERTIFICATE AND SUBDIVISION PERMIT

THIS PLAT IS HEREBY APPROVED AND SUBDIVISION PERMIT GRANTED BY THE BOARD OF COUNTY COMMISSIONERS OF PARK COUNTY, WYOMING, ON THIS 5th DAY OF JUNE, 1984 A.D. FOR FILING AND RECORDING THIS PLAT WITH THE COUNTY CLERK OF PARK COUNTY, WYOMING, IN ACCORDANCE WITH THE PROVISIONS OF THE STATUTE OF THE STATE OF WYOMING, IN THAT RESPECT AS THE SAME RELATE TO THE LOCATION OF THE PLAT HEREON SET FORTH. THE BOARD OF COUNTY COMMISSIONERS OF PARK COUNTY, WYOMING, HAS DETERMINED THAT THE PLAT IS IN ACCORDANCE WITH THE PROVISIONS OF THE STATUTE OF THE STATE OF WYOMING, IN THAT RESPECT AS THE SAME RELATE TO THE LOCATION OF THE PLAT HEREON SET FORTH.

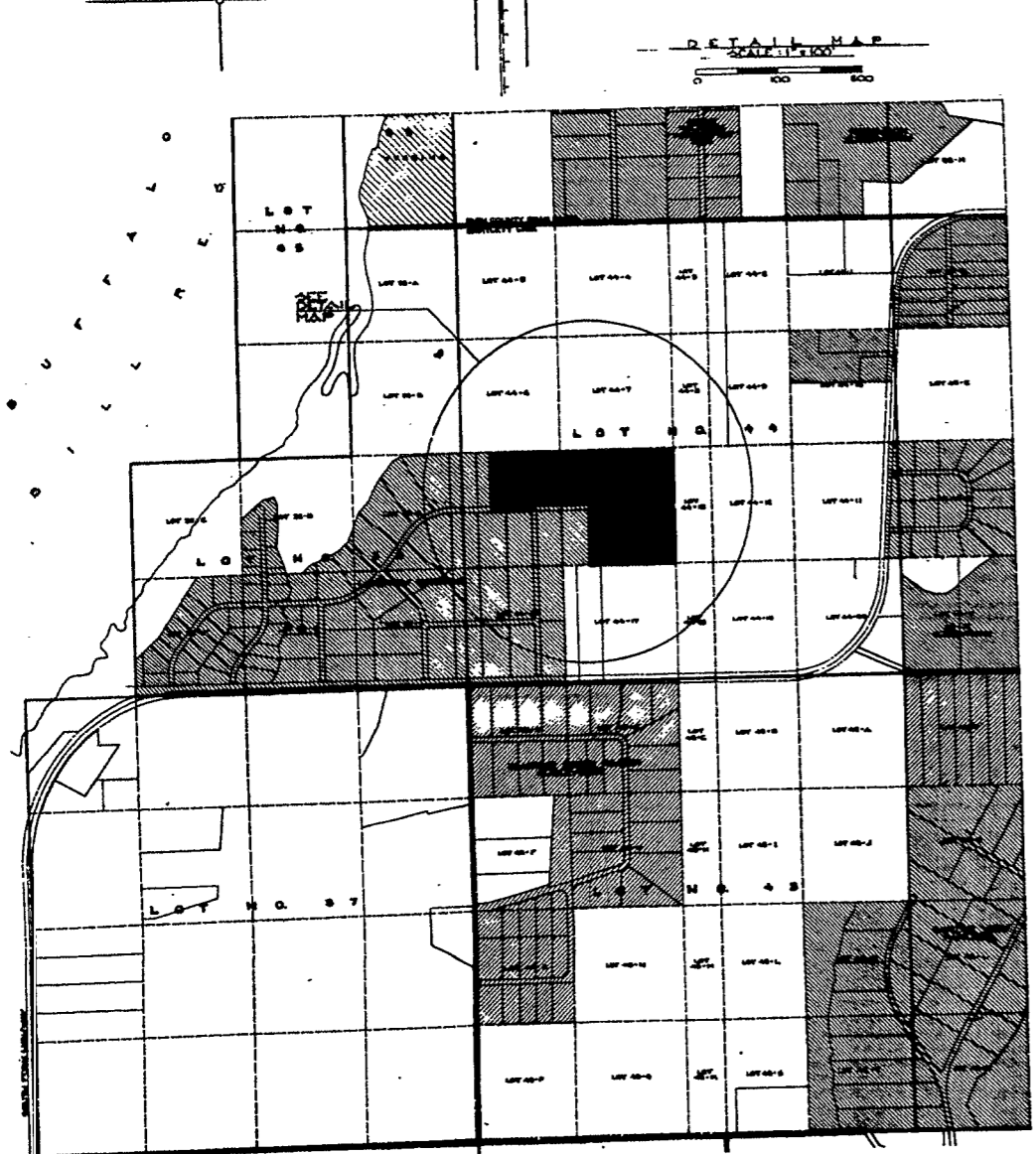
Donald J. Livingston
COUNTY COMMISSIONERS

WITNESS MY HAND AND OFFICIAL SEAL OF THE COUNTY OF PARK THIS 5th DAY OF JUNE, 1984, A.D.

Doris Justice
COUNTY CLERK

PLAT SHOWING LAKEVIEW ESTATES NO. 2

A SUBDIVISION OF PART OF THE REVISED PLAT OF LAKEVIEW ESTATES, LOCATED IN SECTIONS 25-30 (ORIGINAL SURVEY) LOTS 38-44, 47-54, 57-64 (RESERVED), T52 N. R. 103 W. G4 M. PARK COUNTY, WYOMING



CERTIFICATE OF DEDICATION

STATE OF WYOMING }
COUNTY OF PARK }
THE UNDERSIGNED DO HEREBY CERTIFY THAT KAMPERGRUNDS, INC., A WYOMING CORPORATION, IS THE OWNER OF THE REAL PROPERTY DESCRIBED AS FOLLOWS:
LOTS 1, 2, 3, 4, 5, 6, AND THE EAST HALF OF LOT 7 IN BLOCK 1
LOTS 1, 2, 3, AND 4 IN BLOCK 2
LOTS 1, 2, 3, 4, 5, 6, 7, 8, AND 10 IN BLOCK 3

ALL IN REVISED PLAT OF LAKEVIEW ESTATES IN LOT 38 AND LOT 44, T52 N. R. 103 W., G4 M. PARK COUNTY, WYOMING, ACCORDING TO THE RECORDS IN THE PUBLIC RECORD OFFICE OF PARK COUNTY, WYOMING, AND ACCORDING TO THE RECORDS IN THE PUBLIC RECORD OFFICE OF PARK COUNTY, WYOMING, AND ACCORDING TO THE RECORDS IN THE PUBLIC RECORD OFFICE OF PARK COUNTY, WYOMING, AND ACCORDING TO THE RECORDS IN THE PUBLIC RECORD OFFICE OF PARK COUNTY, WYOMING, AND ACCORDING TO THE RECORDS IN THE PUBLIC RECORD OFFICE OF PARK COUNTY, WYOMING.

DATED THIS 2nd DAY OF APRIL, 1984 A.D.
IN WITNESS WHEREOF, THE BOARD OF DIRECTORS OF KAMPERGRUNDS, INC. HAS AUTHORIZED THE PRESIDENT AND SECRETARY TO EXECUTE ON BEHALF OF SAID CORPORATION THIS DAY OF

W. J. Meagher
PRESIDENT
Donald J. Livingston
SECRETARY
WITNESS MY HAND AND OFFICIAL SEAL.

NO PUBLIC OR CENTRAL SEWERAGE DISPOSAL SYSTEM PROPOSED
NO PROPOSED DOMESTIC WATER SOURCE

THE BOARDS OF LANDVIEW ESTATES NO. 2 SUBDIVISION WARRANTS TO THE PUBLIC RECORD OFFICE OF PARK COUNTY, WYOMING, FOR RECORDING THIS PLAT WITH THE COUNTY CLERK OF PARK COUNTY, WYOMING, IN ACCORDANCE WITH THE PROVISIONS OF THE STATUTE OF THE STATE OF WYOMING, IN THAT RESPECT AS THE SAME RELATE TO THE LOCATION OF THE PLAT HEREON SET FORTH.

PLANNING AND ZONING COMMISSION CERTIFICATE

THIS PLAT IS RECOMMENDED FOR APPROVAL BY THE BOARD OF COUNTY COMMISSIONERS OF PARK COUNTY, WYOMING, ON THIS 5th DAY OF JUNE, 1984, A.D.

Robert L. Jensen
ATTEST:
Donald J. Livingston
SECRETARY



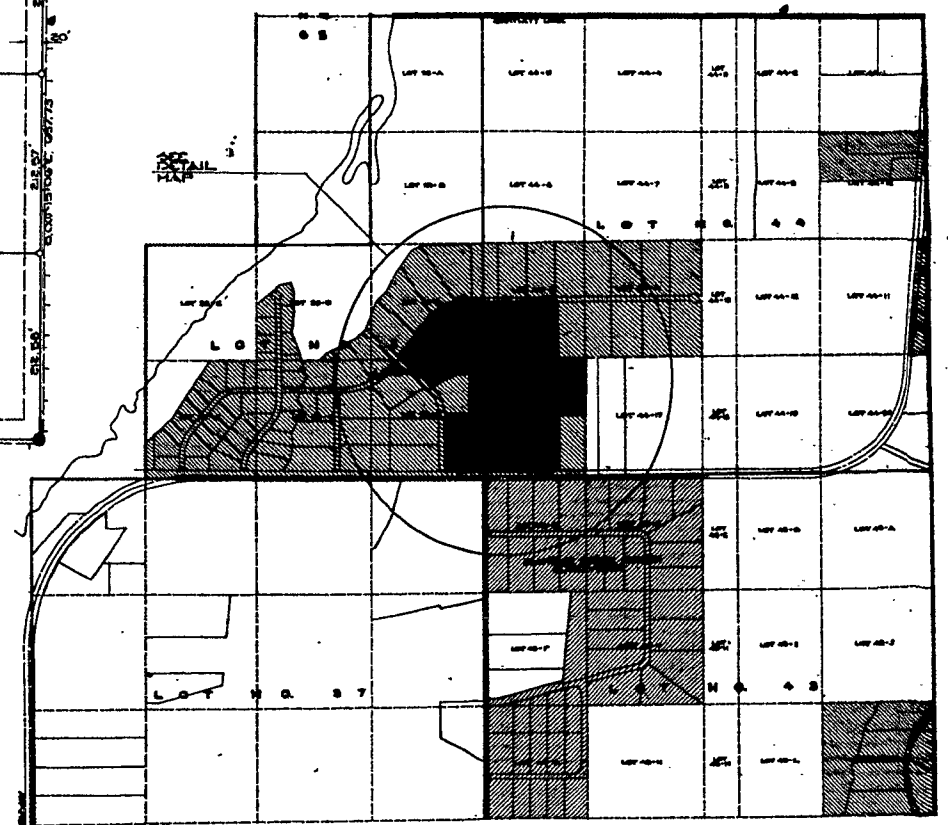
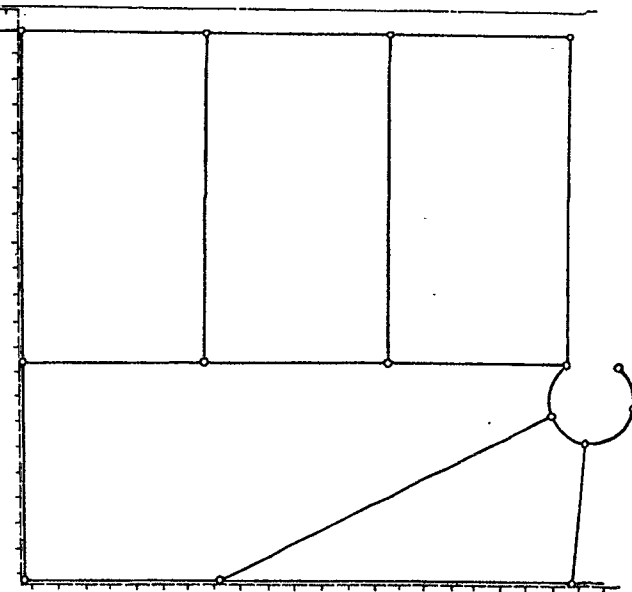
LEGEND

- ORIGINAL SURVEY MONUMENT FOR LAKEVIEW ESTATES NO. 1
- REVISION CAP CHANGES TO SURVEY
- BOUNDARY OF LAKEVIEW ESTATES NO. 1
- NET LOT ACREAGE
- ORIG. LOT ACREAGE
- TOTAL NUMBER OF LOTS IN THIS SUBDIVISION

NO PUBLIC OR CENTRAL SEWAGE DISPOSAL SYSTEM PROPOSED
 NO PROPOSED DOMESTIC WATER SOURCE

CONTINUED FROM HIGHWAY 200
 WYOMING SECONDARY ROAD

DETAIL MAP
 SCALE 1" = 100'



LOCATION MAP
 SCALE 1" = 1000'

PLAT SHOWING LAKEVIEW ESTATES NO. 2

S. J. of Wyoming
 County of Park
 This plat was filed for record on the 21st day of February 1958.
 duly recorded in Section 25, T. 25N., R. 10E., S. 44-10, PARK COUNTY, WYOMING.
 21766

A SUBDIVISION OF PART OF THE REVISED PLAT OF LAKEVIEW ESTATES
 LOCATED IN SECTIONS 25 (30 ORIGINAL SURVEY) LOTS 36-C, 38-11, 44-14, 44-15, 44-16, (RESURVEY) T. 25N., R. 10E., S. 44-10, PARK COUNTY, WYOMING
 PREPARED BY
 DANIELSON ASSOCIATES, CO. WYOMING
 DANIELSON BUILDING, 220 W. 2ND ST.