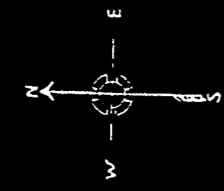


SW 1/4 NW 1/4 Section 33, T.53, R.101 W

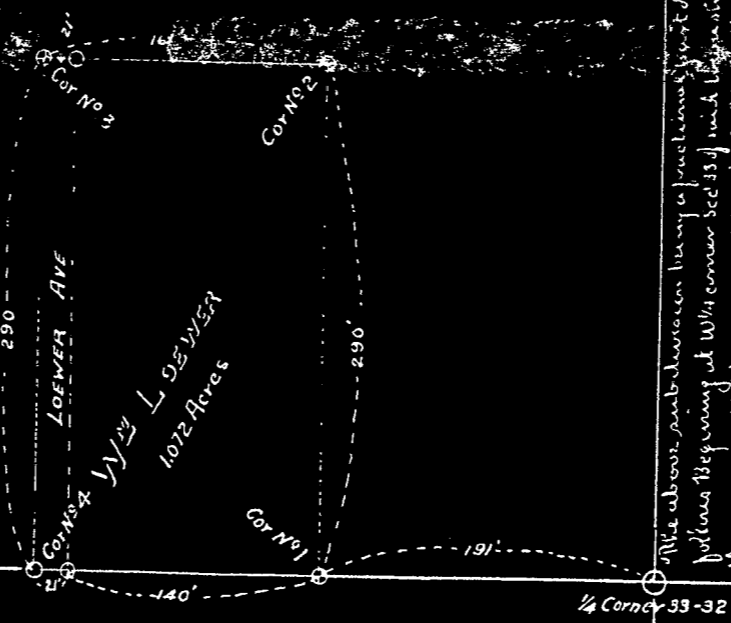


MAP OF
LOWER ADDITION
TO
CODY WYO

Surveyed for Spitzer & Co. by W.C. Loewer

Scale 1"=100'

This plat is made from notes furnished me by W.C. Loewer
Western Surveyor



The above subdivision being a fractional part of the SW 1/4 NW 1/4 Sec 33 T53N R101W as described in Volume 13 page 1 at W 1/4 corner Sec 33 of said Township, Thence N 41 ft. Thence E 240 ft. Thence N 161 ft. Thence W 290 ft. Thence S 140 ft. to point of beginning. That portion said tract lying between the line and a line 21 ft S and joined to said line of said tract is dedicated as a public thoroughfare as appears in this map, and is with this consent and concurrence with the owners and proprietor

William Loewer (SEAL)

State of Wyoming }
County of Big Horn } ss

Notarial Seal: Notary Public, Big Horn, Wyoming

Subscribed and sworn to before me this 2nd day of October, 1906,
at Cody, Wyoming.

Fred C. Bennett
Notary Public

My Commission expires March 16th, 1908.

Fred C. Bennett
Witness

for records, see Big Horn County Transcript
Book 9, Page 287 No. 23793