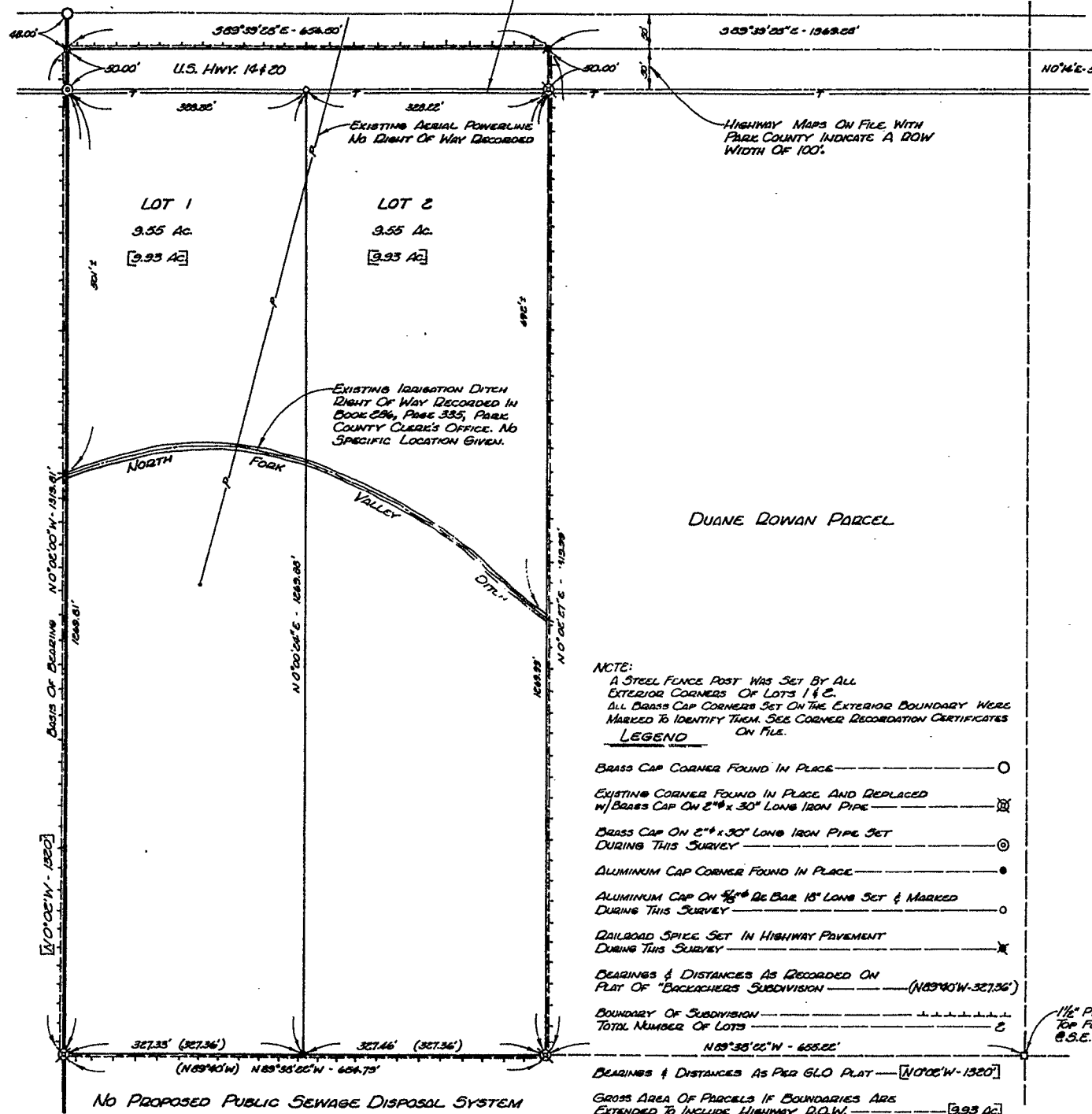


RIGHT OF WAY EASEMENT TO MOUNTAIN STATES TELEPHONE AND TELEGRAPH CO. NO SPECIFIC LOCATION GIVEN. RECORDED IN BOOK 321, PAGE 477, PARK COUNTY CLERK'S OFFICE.



NOTE:
A STEEL FENCE POST WAS SET BY ALL EXTERIOR CORNERS OF LOTS 1 & 2. ALL BRASS CAP CORNERS SET ON THE EXTERIOR BOUNDARY WERE MARKED TO IDENTIFY THEM. SEE CORNER RECORDED CERTIFICATES ON FILE.

LEGEND

- BRASS CAP CORNER FOUND IN PLACE
- EXISTING CORNER FOUND IN PLACE AND REPLACED W/ BRASS CAP ON 2" x 30" LONG IRON PIPE
- BRASS CAP ON 2" x 30" LONG IRON PIPE SET DURING THIS SURVEY
- ALUMINUM CAP CORNER FOUND IN PLACE
- ALUMINUM CAP ON 1/2" DI. BAR 18" LONG SET & MARKED DURING THIS SURVEY
- RAILROAD SPIKE SET IN HIGHWAY PAVEMENT DURING THIS SURVEY
- BEARINGS & DISTANCES AS RECORDED ON PLAT OF "BACKACHERS SUBDIVISION"
- BOUNDARY OF SUBDIVISION
- TOTAL NUMBER OF LOTS

CERTIFICATE OF DEDICATION

THE UNDERSIGNED, DO HEREBY CERTIFY AS FOLLOWS. WE ARE THE OWNERS OF THE W1/4NW1/4, SECTION 23, T52N, R2105W, 6TH P.M., PARK COUNTY, WYOMING. WE HAVE CAUSED SAID LANDS TO BE SURVEYED AND PLATTED AS SHOWN HEREON. THE SUBDIVISION OF SAID LANDS, AS APPEARS ON THIS PLAT, IS WITH THE FREE CONSENT AND IN ACCORDANCE WITH THE DESIRES OF THE UNDERSIGNED OWNERS AND PROPRIETORS. THE SUBDIVISION SHALL BE KNOWN HEREAFTER AS MATSON SUBDIVISION. WE HEREBY DEDICATE AND SET APART THE ROADS AS SHOWN HEREON TO THE USE OF THE GENERAL PUBLIC. WE HEREBY RELEASE AND DELINQUISH ALL RIGHTS OF HOMESTEAD. IN WITNESS WHEREOF WE HAVE HEREBY SET OUR HANDS THIS 13TH DAY OF DECEMBER, 1978.

William A. Matson & Sherrelle Matson
WILLIAM A. MATSON AND SHERRELLE MATSON
HUSBAND AND WIFE

STATE OF WYOMING }
COUNTY OF PARK }
THE FOREGOING CERTIFICATE WAS ACKNOWLEDGED BEFORE ME BY WILLIAM A. MATSON AND SHERRELLE MATSON THIS 13TH DAY OF DECEMBER, 1978.
WITNESS MY HAND AND OFFICIAL SEAL.

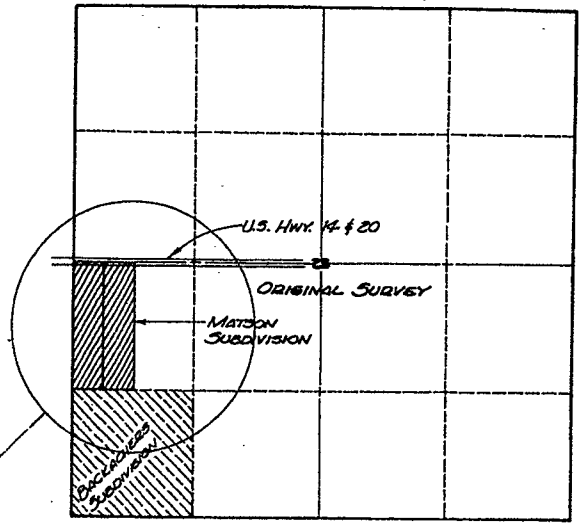
MY COMMISSION EXPIRES: March 14, 1981
Notary Public

SUBDIVISION PERMIT

A SUBDIVISION PERMIT IS HEREBY GRANTED FOR THE SUBDIVISION SHOWN HEREON THIS 7TH DAY OF MARCH, 1979, BY THE COMMISSIONERS OF PARK COUNTY, WYOMING, AND THIS PLAT IS HEREBY APPROVED.

Attest: Marie Lorraine
COUNTY CLERK

T52N - R2105W



VICINITY MAP
SCALE - 1" = 1000'

CERTIFICATE OF SURVEYOR

STATE OF WYOMING }
COUNTY OF PARK }

I, DONALD J. LIVINGSTON, A LAND SURVEYOR REGISTERED IN WYOMING BY REGISTRATION NO. 647 P.E.-L.S., HEREBY CERTIFY AS FOLLOWS. BETWEEN 14 NOVEMBER 1978 & 16 NOVEMBER 1978, THE MATSON SUBDIVISION SHOWN HEREON WAS SURVEYED UNDER MY DIRECTION BY DAVID L. BAUBAKER, FOR WHOSE WORK I STAND PERSONALLY RESPONSIBLE. THE LAND SURVEYED IS CORRECTLY DESCRIBED IN THE OWNERS CERTIFICATE OF DEDICATION AND THE SUBDIVISION THEREOF IS CORRECTLY SHOWN ON THIS PLAT WHICH IS DRAWN TO THE SCALE INDICATED. DIMENSIONS ARE GIVEN IN FEET AND DECIMALS. DIRECTIONS ARE GIVEN IN DEGREES, MINUTES AND SECONDS OF ARC AND ARE DEFERRED TO THE TRUE MERIDIAN WHICH WAS DETERMINED FROM THE WEST LINE OF SECTION 23. I AM FAMILIAR WITH THE PARK COUNTY SUBDIVISION REGULATIONS AND BELIEVE THIS SUBDIVISION COMPLIES WITH THEM IN EVERY RESPECT. LOST OR OBLITERATED GOVERNMENT LAND CORNER MONUMENTS WERE RESTORED AS REQUIRED. SUBDIVISION OF SECTIONS, LOTS OR TRACTS INTO ALIQUOT PARTS WAS DONE AS REQUIRED. CERTIFIED LAND CORNER RECORDED CERTIFICATES HAVE BEEN RECORDED IN THE OFFICE OF THE PARK COUNTY CLERK FOR EVERY SURVEYED MONUMENT RECOVERED DURING THE SURVEY OF THIS SUBDIVISION IN ACCORDANCE WITH THE REQUIREMENTS OF W.S. 36-215 THROUGH 36-222. MONUMENTS SHOWN AND ALL LOT CORNERS MARKING THIS SURVEY WERE ACTUALLY SET AND THE MONUMENTS ARE AS DESCRIBED HEREON. ALL ELEMENTS OF THE SURVEY CLOSE TO AN ACCURACY OF ONE PART IN FIVE THOUSAND OR BETTER.



Donald J. Livingston
DONALD J. LIVINGSTON
WYO. RES. NO. 647 P.E.-L.S.

STATE OF WYOMING }
COUNTY OF PARK }

THE FOREGOING CERTIFICATE WAS ACKNOWLEDGED BEFORE ME BY DONALD J. LIVINGSTON THIS 13TH DAY OF DECEMBER, 1978.

WITNESS MY HAND AND OFFICIAL SEAL.
Notary Public

MY COMMISSION EXPIRES: JANUARY 14, 1981

MATSON SUBDIVISION

LOCATED IN
W1/4NW1/4, SECTION 23
T52N, R. 2105W, 6TH P.M.,
ORIGINAL SURVEY
PARK COUNTY, WYOMING
PREPARED BY
ENGINEERING ASSOCIATES - CODY WYOMING
CONSULTING ENGINEERS & SURVEYORS
DECEMBER 1978

REVISION DATE: 19 JANUARY 1979