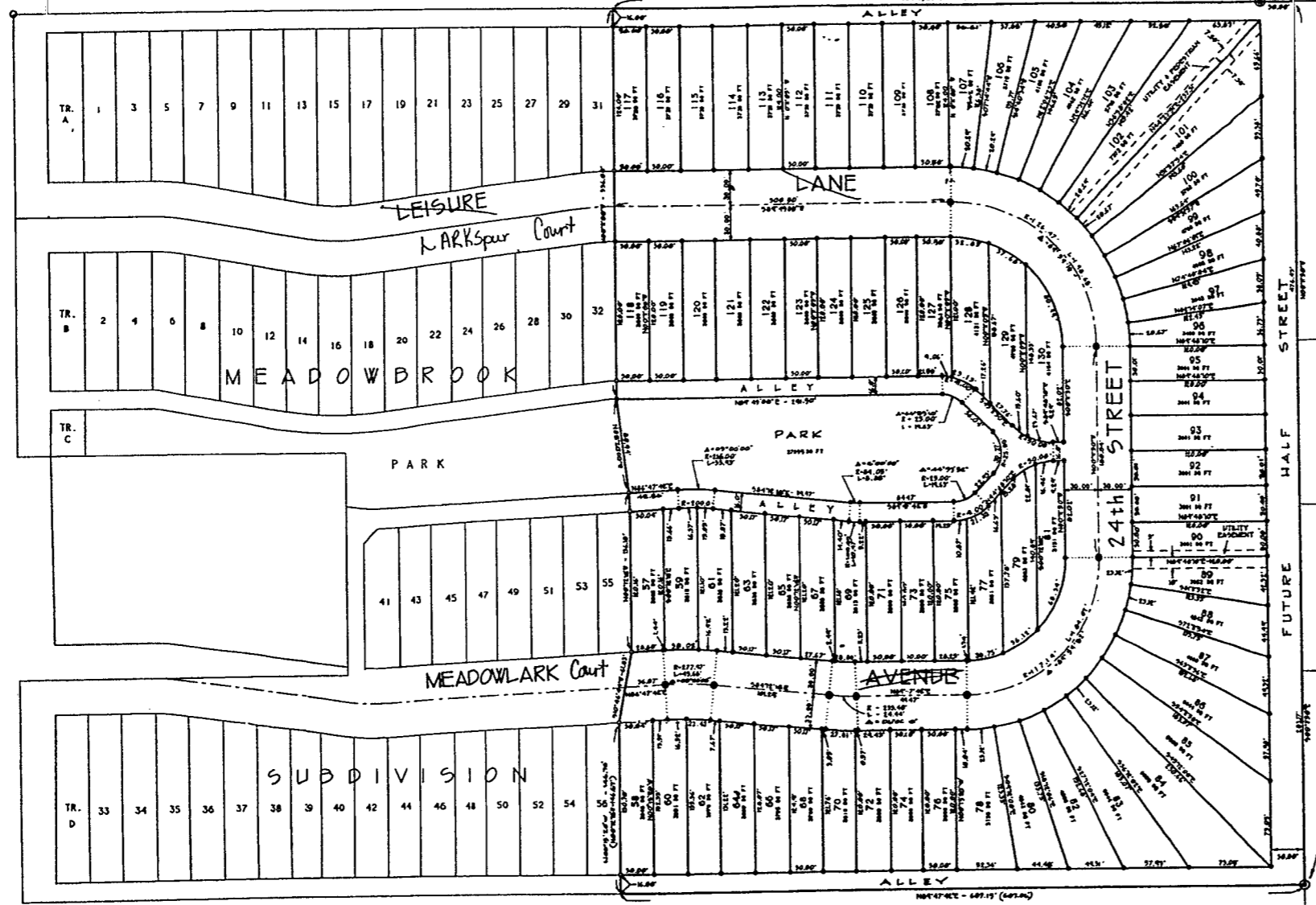


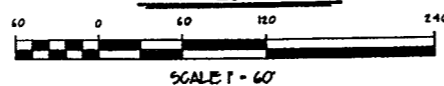
AVENUE

KERPER BLVD. NORTH

23rd STREET



PLAN



CERTIFICATE OF SURVEYOR

STATE OF WYOMING } 55
County of Park

I, Paul A. Blough, a Professional Registered Land Surveyor registered in the State of Wyoming by Registration Number 2332 hereby certify:
 THAT between 10:11 to 10:11, 1992 the Meadowbrook Subdivision, Second Filing, shown hereon was surveyed under my direction.
 THAT the land surveyed is correctly described in the owner's Certificate of Dedication, and this plat accurately shows the correct location and dimensions of the lots, easements, streets and alleys of said subdivision.
 THAT the requirements of W.S. 36-11-101 through 36-11-110 were complied with and monuments and lot corners shown and described hereon were actually set.
 THAT all elements of the survey close to an accuracy of one part in five thousand or better and dimensions of lots are given in feet and decimals of a foot, any surplus or deficiency is distributed uniformly in proportion to the measurements shown on this plat.
 THAT the north line of Tract 61 T. 52 N., R. 101 W. of the 6th P.M. Reserve (north line of Meadowbrook Subdivision) bearing N. 09°49' E. was used as the bearing base for all bearings surveyed and shown on this plan.

In witness whereof I have set my hand and seal this 22nd day of DECEMBER, 1992 A.D.

Paul A. Blough
 Paul A. Blough
 Wyoming Registration No. L.S. 2332



STATE OF WYOMING } 55
County of Park

The foregoing certificate was acknowledged before me this 22nd day of December, 1992 A.D.
Witness my hand and official seal.

Mary C. Wines
 Notary Public

My commission expires: Sept. 26, 1996

APPROVALS

CITY PLANNING AND ZONING BOARD

Approved this 21 day of DECEMBER, 1992 by the City Planning and Zoning Board, Cody, Wyoming.

BY CHAIRMAN: Norman Parker
 Norman Parker

CITY COUNCIL APPROVAL

Approved this 21 day of DECEMBER, 1992 by the City Council of Cody, Wyoming.

BY: Dorise Miller, Jr.
 Dorise Miller, Jr.
 Mayor

ATTEST: James S. Smiley
 James S. Smiley
 City Clerk

STATE OF WYOMING } 55
County of Park

The foregoing approval was acknowledged before me by Dorise Miller, Jr., Mayor and James S. Smiley, City Clerk, this 23 day of December, 1992.

Witness my hand and official seal.

Virginia J. Smiley
 Notary Public

My commission expires: 11-24-94

CERTIFICATE OF DEDICATION

STATE OF WYOMING } 55
County of Park

We, the undersigned, hereby certify that we are the Owners and Proprietors of: Tract E of the Meadowbrook Subdivision within the City of Cody, Park County, Wyoming. That we have caused said described land to be surveyed and platted as shown hereon as the Meadowbrook Subdivision, Second Filing; that the subdivision as appears on this plat is with the free consent and in accordance with the desires of the undersigned Owners and Proprietors; and that we hereby dedicate and set apart the streets and alleys shown hereon to the use of the general public forever. We hereby release and relinquish all rights of homestead.
 In witness whereof we have hereunto set our hand this 20 day of January, 1992.

INTERMOUNTAIN INSURANCE GROUP, INC.
 P. O. Box 70
 Cody, Wyoming
 BY: Donald G. Price
 Donald G. Price
 President

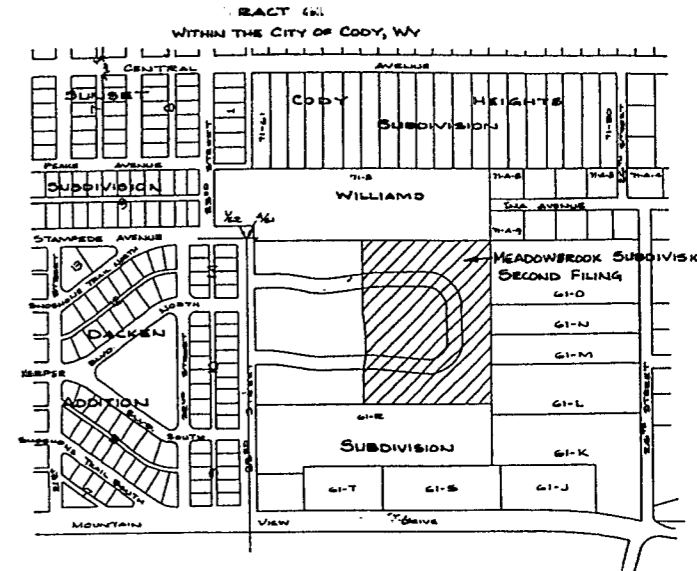
Gladys J. Price
 Gladys J. Price
 Secretary

STATE OF WYOMING }
County of Park

The foregoing Certificate of Dedication was acknowledged before me by Donald G. Price and Gladys J. Price this 20 day of January, 1992.
Witness my hand and official seal.

William D. Larkin
 Notary Public

My commission expires: 8-27-95



VICINITY MAP

SCALE: 1" = 400'

LEGEND

- Draw cap found in place _____ ⊙
- Rebar with alum. cap found in place _____ ⊙
- 1/2" iron pipe found in place _____ ⊙
- 2" 6.1" street monument found in place _____ ⊙
- 5/8" X 24" rebar with alum. cap set _____ ⊙
- 2" X 30" alum. pipe with alum. cap set _____ ⊙
- 2" X 30" G.I.P. set in concrete on streets are constructed _____ ⊙
- Dimensions of record shown thus _____ (N 09°49'E)
- Dimensions obtained this survey shown thus _____ N 09°49'E

COUNTY CLERK'S CERTIFICATE

This plat was filed for the public record in the Office of the Clerk, Park County, Wyoming, at 2:21 o'clock P.M. on the 29 day of JANUARY, 1992 A.D., and is duly recorded in Book F, Page Number 72.

Marie Fontaine
 Park County Clerk

BY: Debra Lupton
 Deputy

303910

INTERMOUNTAIN INSURANCE GROUP, INC.
 P.O. BOX 70 - CODY, WYOMING 82414
 PLAT SHOWING

MEADOWBROOK SUBDIVISION,
 SECOND FILING
 A SUBDIVISION OF TRACT E OF THE
 MEADOWBROOK SUBDIVISION WITHIN
 THE CITY OF CODY, WYOMING

HOLM, BLOUGH & COMPANY CONSULTING ENGINEERS & LAND SURVEYORS
 CODY, WYOMING NOVEMBER, 1992