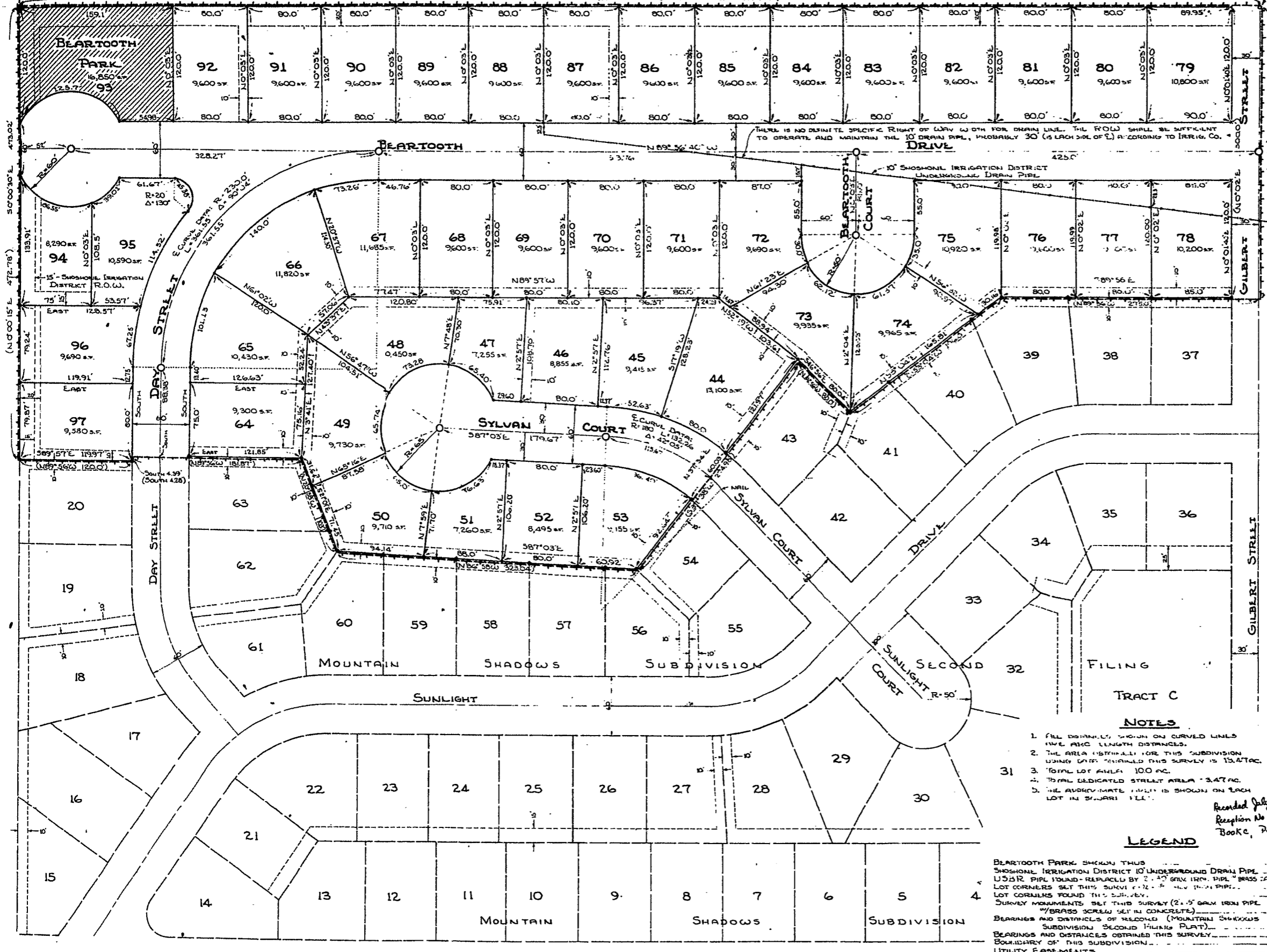


USBR PIPE FOUND, NW COR. FARM UNIT 74-F T55N, R99W.
REPLACED WITH A 2"x30" GALV. IRON PIPE w/ BRASS CAP

BRASS CAP - NE COR. FARM UNIT 74-F
T55N, R99W.



SURVEYOR'S CERTIFICATE

STATE OF WYOMING }
COUNTY OF PARK }
I, DARVIN D. DITZ, of Powell, Wyoming hereby certify that during the period from April 21, 1976 to May 7, 1976 the MOUNTAIN SHADOWS SUBDIVISION THIRD FILING WAS SURVEYED BY ME AND UNDER MY DIRECTION; THAT SAID SUBDIVISION IS CORRECTLY DESCRIBED IN THE OWNERS CERTIFICATE OF DEDICATION ON THIS PLAT WHICH IS SUBJECT TO A SCALE OF INCH EQUALS 50 FEET. THE WIDTHS OF STREETS AND DIMENSIONS OF LOTS ARE GIVEN IN FEET AND DECIMALS OF A FOOT, AND ANY SURPLUS OR DEFICIENCY IS DISTRIBUTED UNIFORMLY IN PROPORTION TO THE MEASUREMENTS SHOWN ON THIS PLAT. EACH LOT BEARS ITS OWN NUMBER. ALL LOT CORNERS ARE 1/2" x 1/8" GALVANIZED IRON PIPE DRIVEN FIRMLY INTO THE GROUND. THE BEARING BRASS USED FOR THIS SURVEY WERE 50' O.I. 40' U.I. ON THE EAST LINE OF FARM UNIT 74-F WHICH IS ALSO THE E. OF GILBERT STREET.
WYOMING REGISTRATION NO. 696 REELS. *Darvin D. Ditz*
DARVIN D. DITZ



CERTIFICATE OF DEDICATION

STATE OF WYOMING }
COUNTY OF PARK }
WE THE UNDERSIGNED HEREBY CERTIFY THAT WE ARE THE OWNERS AND PROPRIETORS OF TRACT D OF THE MOUNTAIN SHADOWS SUBDIVISION SECOND FILING ACCORDING TO THE RECORDED PLAT THEREOF, WHICH IS A PART OF FARM UNIT 74-F, LOT 74, T55N, R99W, OF THE 6TH R.M., WITHIN THE CITY OF POWELL, PARK COUNTY, WYOMING ACCORDING TO THE GOVERNMENT RESURVEY, SAID TRACT D BEING MORE PARTICULARLY DESCRIBED AS FOLLOWS:
BEGINNING AT THE NW CORNER OF LOT 20 OF SAID SUBDIVISION; THENCE N 0° 01' 15" E ALONG THE WEST LINE OF SAID FARM UNIT 74-F FOR A DISTANCE OF 472.75' TO THE NW CORNER THEREOF; A 2"x30" WIDE W/BRASS CAP; THENCE S89° 56' 40" E ALONG THE NORTH LINE OF SAID FARM UNIT 74-F FOR A DISTANCE OF 1318.89 FEET TO THE NE CORNER THEREOF; A BRASS CAP IN PLACE; THENCE S 0° 01' 40" W ALONG THE EAST LINE OF SAID FARM UNIT 74-F FOR A DISTANCE OF 300.0 FEET; THENCE N89° 56' 40" E FOR A DISTANCE OF 275.0 FEET; THENCE S53° 04' W FOR A DISTANCE OF 196.0 FEET; THENCE N46° 56' W FOR A DISTANCE OF 80 FEET; THENCE S 3° 37' 38" W FOR A DISTANCE OF 274.98 FEET; THENCE N86° 58' W FOR A DISTANCE OF 323.04 FEET; THENCE N20° 58' W FOR A DISTANCE OF 103.0 FEET; THENCE N89° 56' W FOR A DISTANCE OF 181.87 FEET; THENCE DUE SOUTH FOR A DISTANCE OF 4.28 FEET; THENCE N89° 56' W FOR A DISTANCE OF 120.0 FEET TO THE POINT OF BEGINNING; SAID TRACT D CONTAINING 13.46 ACRES ACCORDING TO THE PLAT OF RECORD.
THAT WE HAVE CAUSED SAID DESCRIBED TRACT OF LAND TO BE SURVEYED AND PLATTED AS SHOWN HEREON AS THE MOUNTAIN SHADOWS SUBDIVISION THIRD FILING; THAT THE SUBDIVISION AS APPEARS ON THIS PLAT IS WITH THE FREE CONSENT AND IN ACCORDANCE WITH THE DESIRES OF THE UNDERSIGNED OWNERS AND PROPRIETORS; AND THAT WE HEREBY DEDICATE AND SET APART THE STREETS AND UTILITY EASEMENTS SHOWN HEREON TO THE USE OF THE GENERAL PUBLIC FOREVER. WE HEREBY RELEASE AND RELINQUISH ALL RIGHTS OF HOMESTEAD. WE HEREBY DEDICATE BEAR TOOTH PARK (LOT 93) SHOWN HEREON TO THE CITY OF POWELL FOR USE AS A PUBLIC PARK.
IN WITNESS WHEREOF, WE HAVE HEREUNTO SET OUR HAND THIS 28th DAY OF JUNE, 1976.
R.A. Nelson
NELSON ASSOCIATES
R.A. NELSON
PRESIDENT
ATTEST: *Russ Wiedkamp*
RUSS WIEDKAMP - SECRETARY

- NOTES**
1. ALL DISTANCES SHOWN ON CURVED LINES HAVE ARC LENGTH DISTANCES.
 2. THE AREA (DISTANCE) FOR THIS SUBDIVISION USING DATA OBTAINED THIS SURVEY IS 13.47 AC.
 3. TOTAL LOT AREA 100 AC.
 4. TOTAL DEDICATED STREET AREA 3.47 AC.
 5. THE APPROXIMATE LAYOUT IS SHOWN ON EACH LOT IN SQUARE CELL.

LEGEND

BEAR TOOTH PARK SHOWN THIS SURVEY
SHOSHONI IRRIGATION DISTRICT 10" UNDERGROUND DRAIN PIPE
USBR PIPE FOUND - REPLACED BY 2" x 30" GALV. IRON PIPE w/ BRASS CAP
LOT CORNERS SET THIS SURVEY 1/2" x 1/8" GALV. IRON PIPE
LOT CORNERS FOUND THIS SURVEY
SURVEY MONUMENTS SET THIS SURVEY (2" x 5" GALV. IRON PIPE w/ BRASS SCREW SET IN CONCRETE)
BEARINGS AND DISTANCES OF RECORDED (MOUNTAIN SHADOWS SUBDIVISION SECOND FILING PLAT) (SOUTH 425')
BEARINGS AND DISTANCES OBTAINED THIS SURVEY (N25° 18' 8" E)
BOUNDARY OF THIS SUBDIVISION
UTILITY EASEMENTS

STATE OF WYOMING }
COUNTY OF PARK }
THE FOREGOING INSTRUMENT WAS ACKNOWLEDGED BEFORE ME THIS 28th DAY OF JUNE, 1976. WITNESS MY HAND AND OFFICIAL SEAL.
MY COMMISSION EXPIRES _____ DAY OF _____, 1976.
Darvin D. Ditz
NOTARY PUBLIC

APPROVALS

APPROVED BY THE PLANNING AND ZONING COMMISSION OF THE CITY OF POWELL, WYOMING THIS _____ DAY OF _____, 1976.
SECRETARY _____ CHAIRMAN _____

APPROVED BY THE CITY COUNCIL OF THE CITY OF POWELL, WYOMING THIS _____ DAY OF _____, 1976.
ATTEST: *Ralph H. Smith*
CITY CLERK *Ralph H. Smith*
MAYOR

SCALE: 1" = 50'

NELSON ASSOCIATES
POWELL, WYOMING
PLAT SHOWING BEAR TOOTH PARK (LOT 93)
MOUNTAIN SHADOWS SUBDIVISION
THIRD FILING
SUBDIVISION OF TRACT D OF FARM UNIT 74-F