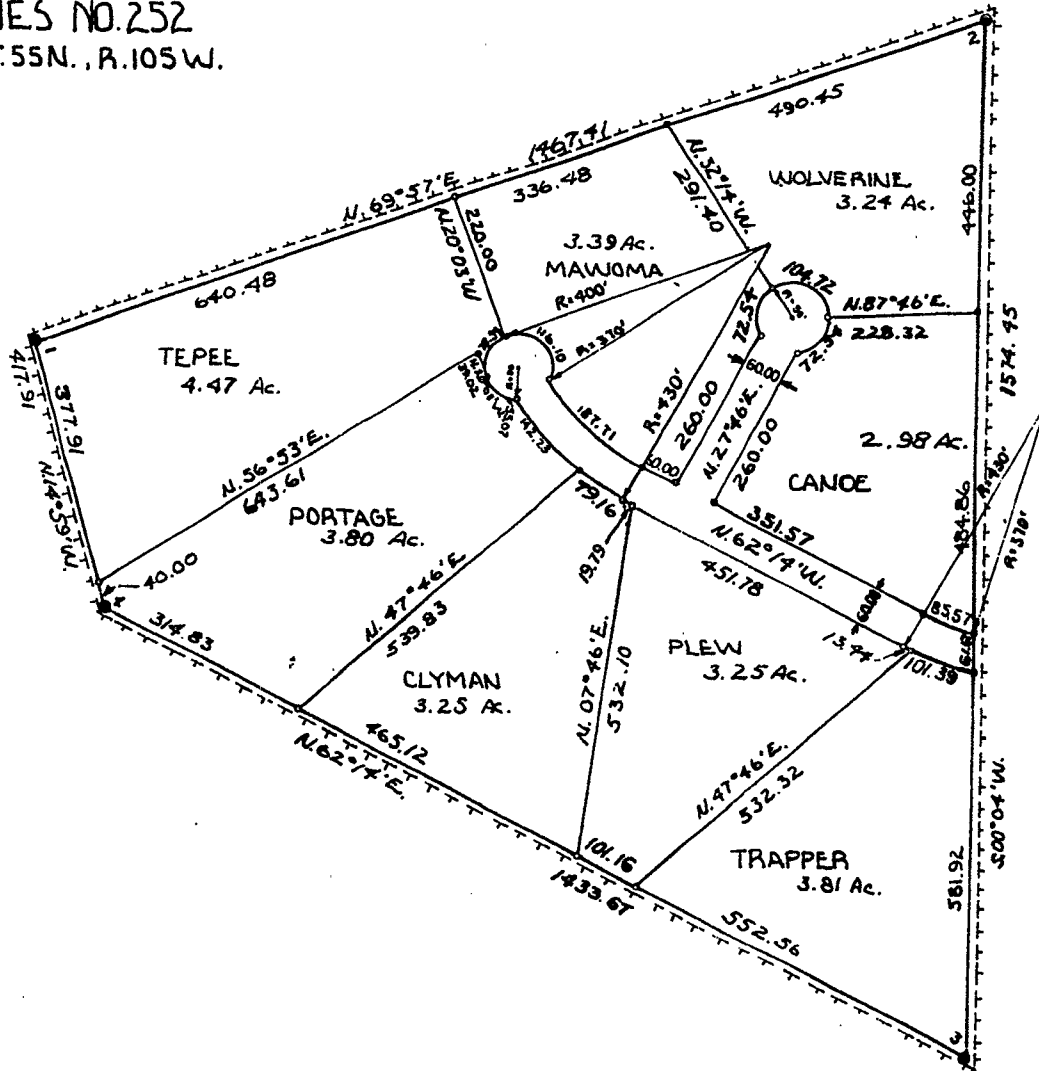


HES NO. 252
T.55N., R.105W.



15 9 August
9:40 R
D
60
Eva E. Larson
Eileen V. Kandler
146618 2500

LEGEND

- ORIGINAL GOVERNMENT STONE CORNERS FOUND IN PLACE SHOWN THUS —●—
- 1/4" DIA. x 18" GALVANIZED PIPE CORNERS SET DURING THIS SURVEY SHOWN THUS —○—
- 3/4" DIA. x 18" GALVANIZED PIPE CORNERS FOUND IN PLACE SHOWN THUS —●—
- BOUNDARY OF MOUNTAIN WEST SUBDIVISION III SHOWN THUS —+—+—+—

CERTIFICATE OF DEDICATION

STATE OF WYOMING) S.S.
COUNTY OF PARK)

I, the undersigned, do hereby certify that I am the owner and proprietor of Homestead Entry Survey No. 252 in Section 12, Township 55 North, Range 105 West of the Sixth Principal Meridian, Park County, Wyoming; that I have caused said described lands to be surveyed and plotted as shown hereon; that the above described or foregoing subdivision as appears on this plat is with the free consent and in accordance with the desires of the undersigned owner and proprietor and shall be known as Mountain West Subdivision III and that I hereby dedicate and set apart the roads as shown hereon to the use of the general public forever.

I hereby release and relinquish all rights of homestead.

In witness whereof, I have hereunto set my hand this 2nd day of July 1973.

John S. Bereman
John S. Bereman

State of Wyoming,)
County of Park,)
This is a true copy of the original instrument filed for record on the 9 day of August 1973 at 9:40 clock A.M. and duly recorded in Book of Plat records on page 60 of Eva Larson County Clerk
By Eileen Kandler Deputy
No. 146618 Fees \$

STATE OF WYOMING) S.S.
COUNTY OF PARK)

The foregoing instrument was acknowledged before me this 2nd day of July, 1973, witness my hand & official seal.

Donald J. Livingston
Notary Public

My commission expires _____

SURVEYORS CERTIFICATE

I, Wesley W. Reed, of Cody, Wyoming, hereby certify that between June 12, 1973 and June 27, 1973 the Mountain West Subdivision III was surveyed under my direction and is correctly described in the Certificate of Dedication; that the same is correctly shown on this plat which is drawn to the scale indicated; that dimensions are given in feet and decimals, and, any surplus or deficiency existing is distributed uniformly in proportion to the plat dimensions; that distances shown along curved lines are measured along the arc.

Wesley W. Reed
Wesley W. Reed

Wyoming Registration No. 537 L.S.

Approved this 1 day of August, 1973 by the Commissioners of Park County, Wyoming subject to the provisions of Section 5 of the Park County policy on the approval of subdivision and townsite plats as adopted August 7, 1962.

By: *Alma Stutzman*
Chairman of Commissioners
Attest: *Eva E. Larson*
County Clerk

SCALE 1"=200'

PLAT SHOWING

Base 4211-2675
MOUNTAIN WEST SUBDIVISION III
A SUBDIVISION OF H.E.S. 252 IN SECTION 12, T.55N., R.105W. 6TH P.M.
ENGINEERING ASSOCIATES - CODY, WYO.
CONSULTING ENGINEERS & LAND SURVEYERS