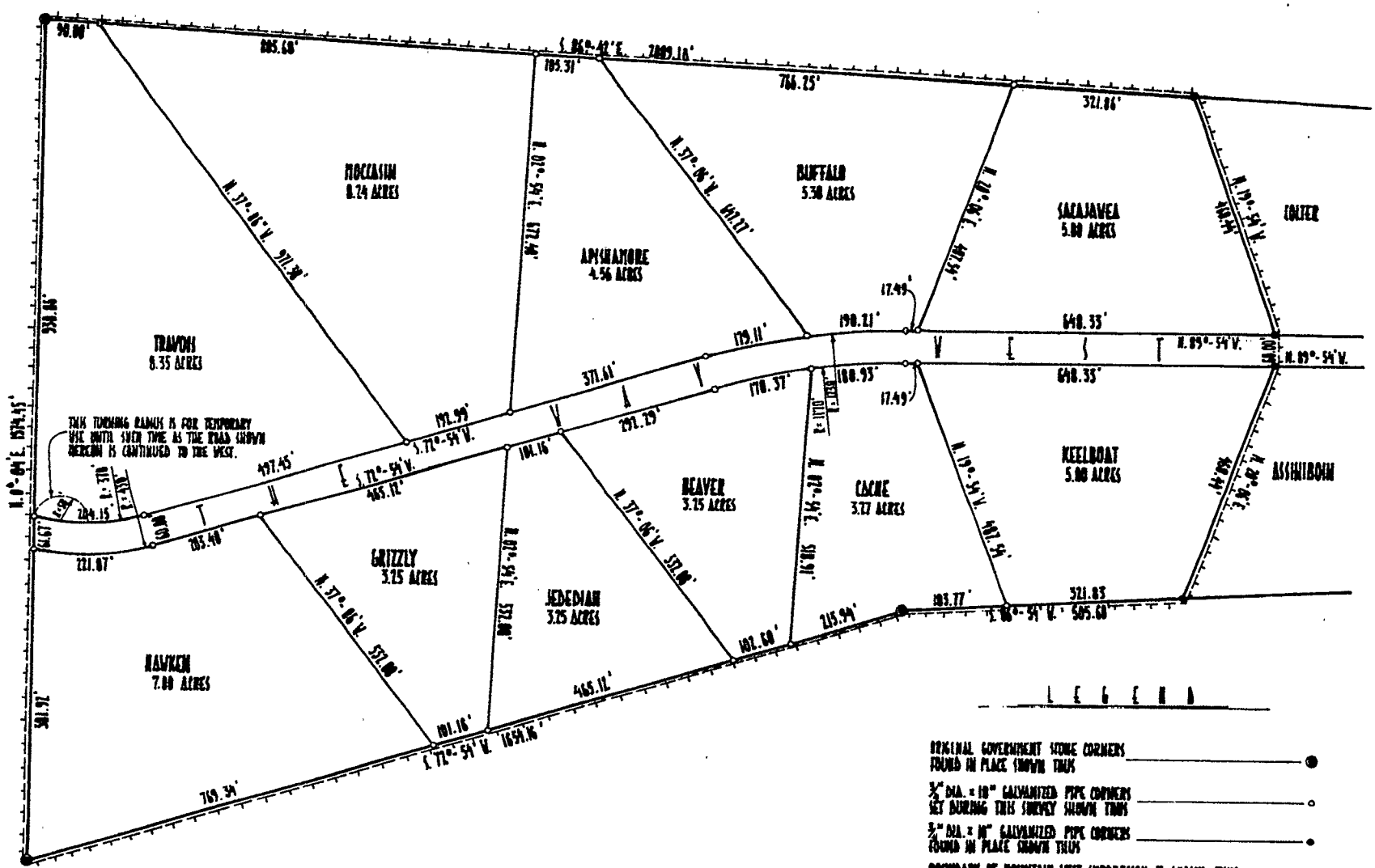


MOUNTAIN WEST SUBDIVISION II



CERTIFICATE OF DEDICATION

STATE OF WYOMING
COUNTY OF PARK

WE, THE UNDERSIGNED, DO HEREBY CERTIFY THAT WE ARE THE OWNERS AND PROPRIETORS OF LEFT, A LOT IN MOUNTAIN WEST SUBDIVISION II IN TOWNSHIP 55 NORTH, RANGES 104 AND 105 WEST OF THE SIXTH PRINCIPAL MERIDIAN, PARK COUNTY, WYOMING, THAT WE HAVE CAUSED SAID DESCRIBED LANDS TO BE SURVEYED AND PLATTED AS SHOWN HEREON; THAT THE ABOVE DESCRIBED OR FOREGOING SUBDIVISION AS APPEARS ON THIS PLAT IS WITH THE FREE CONSENT AND IN ACCORDANCE WITH THE DESIRES OF THE UNDERSIGNED OWNERS AND PROPRIETORS AND SHALL BE KNOWN AS MOUNTAIN WEST SUBDIVISION II, AND THAT WE HEREBY DEDICATE AND SET APART THE ROAD AS SHOWN HEREON TO THE USE OF THE GENERAL PUBLIC FOREVER.

WE HEREBY RELEASE AND RELINQUISH ALL RIGHTS OF INTEREST.
IN WITNESS WHEREOF, WE HAVE HEREUNTO SET OUR HANDS THIS 19th DAY OF SEPT., 1972.
John S. Bereman *Louise Bereman*
JOHN S. BEREMAN LOUISE BEREMAN

STATE OF WYOMING
COUNTY OF PARK

THE FOREGOING INSTRUMENT WAS ACKNOWLEDGED BEFORE ME THIS 19th DAY OF SEPT., 1972, WITNESS MY HAND AND OFFICIAL SEAL.

BY COMMISSION EXPIRES 10/20/75 *Jarvis H. Dodge*
NOTARY PUBLIC

SURVEYORS CERTIFICATE

I, WESLEY V. REED, OF CODY, WYOMING, HEREBY CERTIFY THAT BETWEEN SEPTEMBER 9, 1972 AND OCTOBER 2, 1972, THE MOUNTAIN WEST SUBDIVISION II WAS SURVEYED UNDER MY DIRECTION AND IS CORRECTLY DESCRIBED IN THE CERTIFICATE OF DEDICATION, THAT THE SAME IS CORRECTLY SHOWN ON THIS PLAT WHICH IS DRAWN TO THE SCALE INDICATED. DIMENSIONS ARE GIVEN IN FEET AND DECIMALS AND ANY SURPLUS OR DEFICIENCY EXISTING IS DISTRIBUTED UNIFORMLY IN PROPORTION TO THE PLAT DIMENSIONS. DISTANCES SHOWN ALONG CURVED LINES ARE MEASURED ALONG THE ARC.

WYOMING REGISTRATION NO. 537 L.S. *Wesley V. Reed*
WESLEY V. REED

4 October
72 4:30
57
Eric S. Larson
Blaise R. Rickman
25:00

APPROVED THIS 4 DAY OF Oct., 1972, BY THE COMMISSIONERS OF PARK COUNTY, WYOMING SUBJECT TO THE PROVISIONS OF SECTION 5 OF THE PARK COUNTY POLICY ON THE APPROVAL OF SUBDIVISION AND TRIVIAL PLATS AS ADOPTED AUGUST 7, 1962.

ATTEST: *Eva E. Larson*
COUNTY CLERK
BY: *Alison Stutzman*
CHAIRMAN OF COMMISSIONERS

PLAT SHOWING
MOUNTAIN WEST SUBDIVISION II
A SUBDIVISION OF LEFT, A LOT IN
MOUNTAIN WEST SUBDIVISION II, PARK COUNTY, WYOMING

ENGINEERING ASSOCIATES - CODY, WYOMING
CONSULTING ENGINEERS & LAND SURVEYORS

OCTOBER, 1972

P-6-93