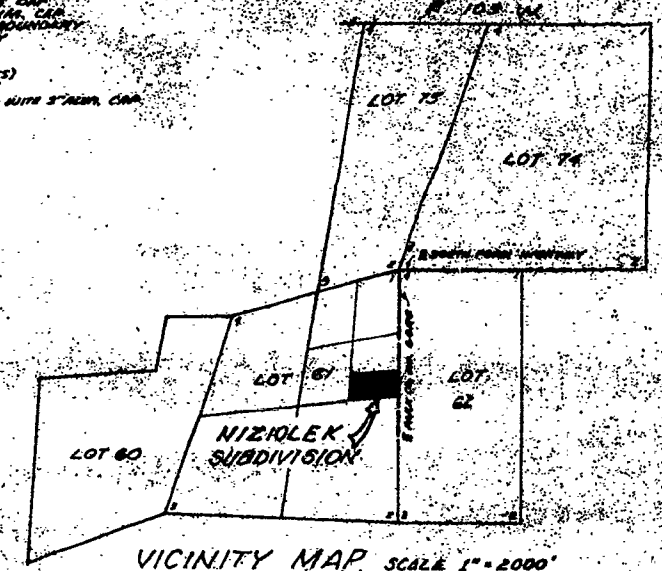


LEGEND
 FOUND. BOUND. CAP.
 PUBLIC. BOUND. CAP.
 SUBDIVISION BOUNDARY
 LOT BOUNDARY
 EASEMENT
 TOTAL LOT 2
 GROSS AREA: (10.00 ACRES)
 NET AREA: (11.77 ACRES)
 1\"/>



NIZIOLEK SUBDIVISION SCALE 1"=100'

COUNTY COMMISSIONER'S CERTIFICATE & SUBDIVISION PERMIT

THIS PLAT IS HEREBY APPROVED AND SUBDIVISION PERMIT ISSUED BY THE BOARD OF COUNTY COMMISSIONERS OF PARK COUNTY, WYOMING, THIS 21ST DAY OF AUGUST, 1964 A.D. FOR PLAT AND RECORDING WITH THE CLERK OF PARK COUNTY, WYOMING, AND FOR THE CONVEYANCE TO THE COUNTY OF PARK THE PUBLIC UTILITIES SHOWN HEREON, SUBJECT TO THE PROVISION THAT THE COUNTY OF PARK WILL NOT BE OBLIGATED TO FINANCE, CONSTRUCT, OR MAINTAIN ANY IMPROVEMENTS WITHIN THIS SUBDIVISION EXCEPT AS SPECIFICALLY ORDERED BY THE COUNTY OF PARK AND FURTHER SAID THAT THE BOARD OF COUNTY COMMISSIONERS WILL NOT FINANCE, ORDER OR CONSTRUCT ANY IMPROVEMENTS NOT SUBMITTED TO THE BOARD OF COUNTY COMMISSIONERS OF PARK AND FURTHER THAT THE COUNTY OF PARK WILL NOT BE OBLIGATED TO FINANCE, CONSTRUCT OR MAINTAIN ANY IMPROVEMENTS NOT SUBMITTED TO THE BOARD OF COUNTY COMMISSIONERS AND ADOPTED BY THE BOARD OF COUNTY COMMISSIONERS OF PARK, WYOMING, ON THE 21ST DAY OF AUGUST, 1964 A.D.

[Signature]
 COUNTY COMMISSIONER
 WITNESS MY HAND AND OFFICIAL SEAL OF THE COUNTY OF PARK THIS 21ST DAY OF AUGUST, 1964 A.D.

PLANNING & ZONING COMMISSION CERTIFICATE

THIS PLAT IS RECOMMENDED AND APPROVED BY THE BOARD OF COUNTY COMMISSIONERS, PARK COUNTY, WYOMING, ON THE 21ST DAY OF AUGUST, 1964 A.D.

COUNTY CLERK'S CERTIFICATE

THIS PLAT HAS BEEN FILED FOR RECORD IN THE OFFICE OF THE CLERK OF PARK COUNTY, WYOMING, AT 11:30 O'CLOCK A.M. ON THE 21ST DAY OF AUGUST, 1964 A.D. AND IS NOW RECORDED IN BOOK 0, PAGE NUMBER 133.

CERTIFICATE OF SURVEYOR

I, PAUL R. CAMPBELL, A LAW SURVEYOR, REGISTERED IN THE STATE OF WYOMING BY REGISTRATION NUMBER 211, U.S. HEREBY CERTIFY THAT BETWEEN MARCH 11, 1964 AND AUGUST 1, 1964 THE NIZIOLEK SUBDIVISION SHOWN HEREON WAS SURVEYED BY PAUL R. CAMPBELL AND CERTIFY THAT THE LAND SURVEYED IS CORRECTLY DESCRIBED IN THE OWNER'S CERTIFICATE OF DEDICATION AND THAT THE SUBDIVISION THEREOF IS CORRECTLY SHOWN ON THIS PLAT AND HAS BEEN PLANNED ACCORDING TO THE PROVISIONS OF THE PUBLIC UTILITIES ACT, WYOMING, AND THE LOCAL ORDINANCES AND ORDINANCES OF THE COUNTY OF PARK, WYOMING, AND THAT ALL ELEMENTS OF THE SURVEY CLOSE TO THE ACCURACY OF THE PLAT, IN THE FOREHAND BE BETTER.

[Signature]
 PAUL R. CAMPBELL
 WYO. L.S. 211
 STATE OF WYOMING)
 COUNTY OF PARK) SS
 THE FOREGOING CERTIFICATE WAS ACKNOWLEDGED BEFORE ME BY PAUL R. CAMPBELL THIS 21ST DAY OF AUGUST, 1964 A.D.
 WITNESS MY HAND AND OFFICIAL SEAL
[Signature]
 NOTARY PUBLIC

NOTES

- THE PUBLIC UTILITIES OWNERS OF ANY LOTS SURVEYED THE NIZIOLEK SUBDIVISION IN THIS PLAT HAVE RIGHTS TO THE NATURAL FLOW OF ANY STREAM OR RIVER WITHIN OR ADJACENT TO THE NIZIOLEK SUBDIVISION, WYOMING, AND SHALL NOT BE OBLIGATED TO MAINTAIN OR IMPROVE THE NATURAL FLOW OF THE STREAM OR RIVER FOR PERSONS LOCATED ON THE BANKS OF THE STREAM OR RIVER.
- BEINGING BASE: S 04° 50' 59" N 1000.14' TO THE EAST 1/4 CORNER AND THE WEST 1/4 CORNER OF LOT 61, RESURVEY T.51N, R.103W, 6th P.M., PARK CO., WYO.

CERTIFICATE of DEDICATION

THE UNDERSIGNED DO HEREBY CERTIFY THAT WE ARE THE OWNERS OF THE REAL PROPERTY DESCRIBED AS FOLLOWS:
 A TRACT OF LAND LOCATED WITHIN LOT 61-H, RESURVEY T.51N, R.103W, 6th P.M., PARK COUNTY, WYOMING, AND BEING MORE PARTICULARLY DESCRIBED AS FOLLOWS:
 BEGINNING AT THE SW CORNER OF SAID LOT 61-H; THENCE S 04° 50' 59" N A DISTANCE OF 1000.14 FEET TO THE SW CORNER OF SAID TRACT; THENCE N 89° 03' 51" E FOR A DISTANCE OF 525.06 FEET TO THE NW CORNER OF SAID TRACT; THENCE N 04° 55' 51" E FOR A DISTANCE OF 1000.45 FEET TO THE NE CORNER OF SAID TRACT; THENCE S 04° 50' 59" E FOR A DISTANCE OF 509.10 FEET TO THE POINT OF BEGINNING; AND CONTAINING 12.77 ACRES OF WHICH 11.77 ACRES ARE IN PUBLIC OR PRIVATE STREET, RIGHT-OF-WAYS, EASEMENTS AND SITES; AND HAVE BEEN PLANNED AND SUBDIVIDED INTO LOTS AND BLOCKS THE NIZIOLEK SUBDIVISION, IN THE COUNTY OF PARK, WYOMING, WITH THE FORCE, COERCION AND ACCORDANCE WITH THE DESIRES OF THE UNDERSIGNED OWNERS AND DO HEREBY GRANT TO PARK COUNTY, WYOMING, FOR THE PUBLIC USE OF THE RIGHT-OF-WAYS SHOWN HEREON AND THE PUBLIC UTILITIES SHOWN AND THE UTILITIES AND THE EASEMENTS, EASEMENTS AND OTHER PURPOSES SO NOTED HEREON AND DO FURTHER STATE THAT WE HEREBY RELEASE AND REINDEMNIFY ALL RIGHTS OF HOMESTEAD AND THAT THIS DEDICATION SHALL BE SUBJECT TO THE CONDITIONS FILED AND RECORDED FOR THIS SUBDIVISION IN THE OFFICE OF THE CLERK OF PARK COUNTY, WYOMING.

EFFECTED THIS 21ST DAY OF AUGUST, 1964 A.D.
 OWNERS:
[Signature] *[Signature]*
 JOHN NIZIOLEK-MOSBAND MARJORIE NIZIOLEK-MOSBAND
 STATE OF WYOMING)
 COUNTY OF PARK) SS
 THE FOREGOING DEDICATION WAS ACKNOWLEDGED BEFORE ME BY JOHN NIZIOLEK AND MARJORIE NIZIOLEK THIS 21ST DAY OF AUGUST, 1964 A.D.
 WITNESS MY HAND AND OFFICIAL SEAL.
[Signature]
 NOTARY PUBLIC

NIZIOLEK SUBDIVISION
 LOCATED IN
 LOT 61-H, RESURVEY T.51N, R.103W
 6th P.M., PARK CO., WYOMING
 PREPARED BY
 CAMPBELL & ASSOCIATES-CODY, WYOMING, - AUGUST, 1964