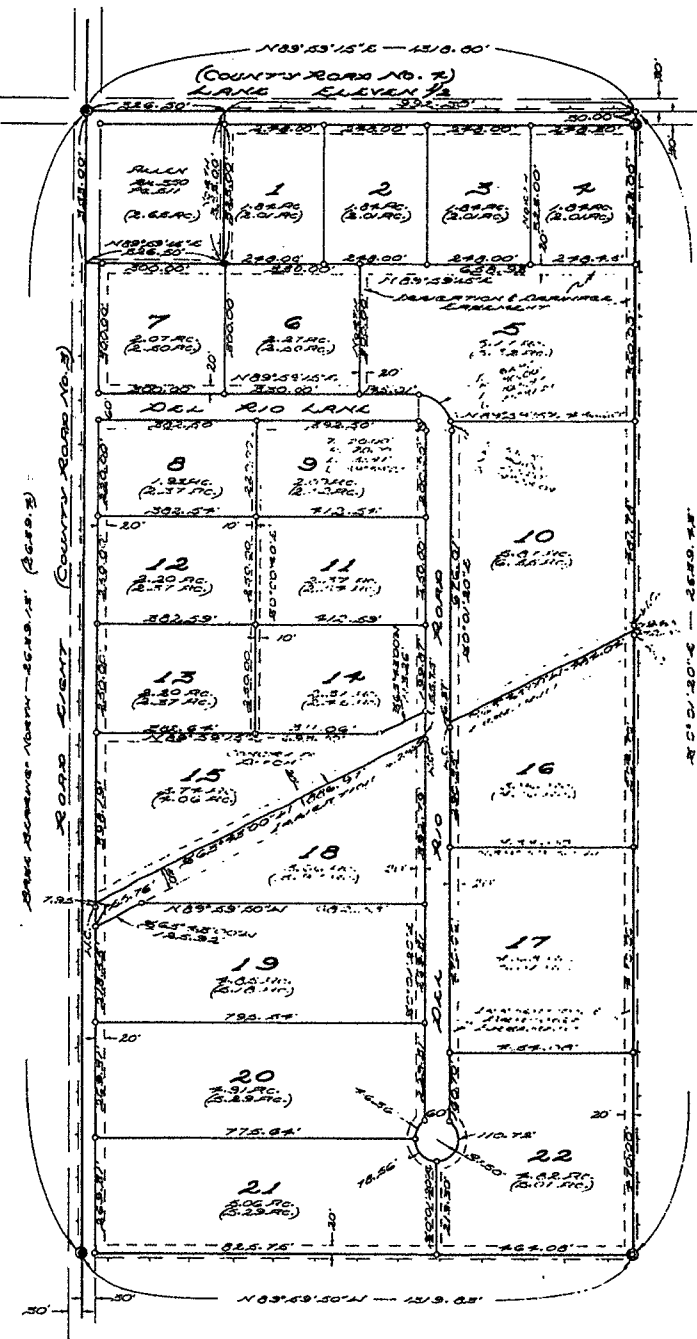


NO PROPOSED PUBLIC SEWAGE DISPOSAL SYSTEM
 NO PROPOSED DOMESTIC WATER SOURCE



SCALE: 1" = 200'

IT IS UNLAWFUL TO DISTURB OR
 DESTROY ANY SURVEY MONUMENT

CERTIFICATE OF SURVEYOR

STATE OF WYOMING }
 COUNTY OF PARK }
 I, PAUL A. BLOUGH, A LAND SURVEYOR REGISTERED IN
 WYOMING BY REGISTRATION NUMBER 2358, L.P. HADLEY
 COMPANY AS FOLLOWS: BETWEEN JUNE 3, 1979 AND FEBRUARY
 9, 1980 THE "NORTH DEL RIO" SUBDIVISION
 SHOWN HEREON WAS SURVEYED BY ME. THE LAND
 SURVEYED IS CORRECTLY DESCRIBED IN THE CHAINED
 COMPUTATIONS OF BEARINGS AND DISTANCES THERE-
 OF AS CORRECTLY SHOWN ON THIS PLAT WHICH IS
 OPEN TO THE PUBLIC INSPECTION. DIMENSIONS ARE
 GIVEN IN FEET AND DECIMALS THEREOF. DIRECTIONS ARE GIVEN
 IN DEGREES, MINUTES AND SECONDS OF ARC AND ARE
 REFERRED TO THE TRUE MERIDIAN WHICH ARE DERIVED
 FROM ASTRONOMICAL OBSERVATIONS MADE AT LOT 29,
 T.55N., R.99W., 1/4TH SECTION WITH THE PARK
 COUNTY SURVEYOR REGULATION AND BELIEVE THAT
 BEARINGS AND DISTANCES ARE CORRECTLY SHOWN
 ON THIS PLAT. MONUMENTS WERE PLACED AT THE
 CORNERS OF LOTS AND AT OTHER POINTS AS NECESSARY
 TO BE RECORDED. COPIES OF THIS SUBDIVISION
 COMPUTATIONS HAVE BEEN RECORDED IN THE OFFICE OF THE
 PARK COUNTY CLERK FOR THE SURVEYOR'S MONUMENT
 RECORDS. I HEREBY CERTIFY THAT THE SUBDIVISION
 IS ACCORDING TO THE REQUIREMENTS OF W.S.
 2-2-15 THROUGH 2-2-22. MONUMENTS SHOWN ON
 ALL LOTS CORRECTLY IDENTIFY THE SURVEY AND
 TRULY REPRESENT THE MONUMENTS AND ARE
 CORRECT HEREON. ALL ELEMENTS OF THIS SURVEY
 COME TO AN ACCURACY OF ONE PART IN ONE
 HUNDRED OR BETTER.

Paul A. Blough
 Paul A. Blough
 LAND SURVEYOR

STATE OF WYOMING }
 COUNTY OF PARK }
 THE FOREGOING CERTIFICATE WAS ACKNOWLEDGED
 BEFORE ME BY PAUL A. BLOUGH THIS 14TH DAY OF
 FEBRUARY, 1980.
 NOTARIAL MY HAND AND OFFICIAL SEAL.

Thomas J. Smith
 Thomas J. Smith
 NOTARY PUBLIC

MY COMMISSION EXPIRES: 5/4/80

LEGEND

- 1" LINE WIDTHS OF LOTS WITHIN THIS PLAT 1/4"
- 2" LINE WIDTHS OF LOTS WITHIN THIS PLAT 1/2"
- 3" LINE WIDTHS OF LOTS WITHIN THIS PLAT 3/4"
- 4" LINE WIDTHS OF LOTS WITHIN THIS PLAT 1"
- 5" LINE WIDTHS OF LOTS WITHIN THIS PLAT 1 1/4"
- 6" LINE WIDTHS OF LOTS WITHIN THIS PLAT 1 1/2"
- 7" LINE WIDTHS OF LOTS WITHIN THIS PLAT 1 3/4"
- 8" LINE WIDTHS OF LOTS WITHIN THIS PLAT 2"
- 9" LINE WIDTHS OF LOTS WITHIN THIS PLAT 2 1/4"
- 10" LINE WIDTHS OF LOTS WITHIN THIS PLAT 2 1/2"
- 11" LINE WIDTHS OF LOTS WITHIN THIS PLAT 2 3/4"
- 12" LINE WIDTHS OF LOTS WITHIN THIS PLAT 3"
- 13" LINE WIDTHS OF LOTS WITHIN THIS PLAT 3 1/4"
- 14" LINE WIDTHS OF LOTS WITHIN THIS PLAT 3 1/2"
- 15" LINE WIDTHS OF LOTS WITHIN THIS PLAT 3 3/4"
- 16" LINE WIDTHS OF LOTS WITHIN THIS PLAT 4"
- 17" LINE WIDTHS OF LOTS WITHIN THIS PLAT 4 1/4"
- 18" LINE WIDTHS OF LOTS WITHIN THIS PLAT 4 1/2"
- 19" LINE WIDTHS OF LOTS WITHIN THIS PLAT 4 3/4"
- 20" LINE WIDTHS OF LOTS WITHIN THIS PLAT 5"
- 21" LINE WIDTHS OF LOTS WITHIN THIS PLAT 5 1/4"
- 22" LINE WIDTHS OF LOTS WITHIN THIS PLAT 5 1/2"

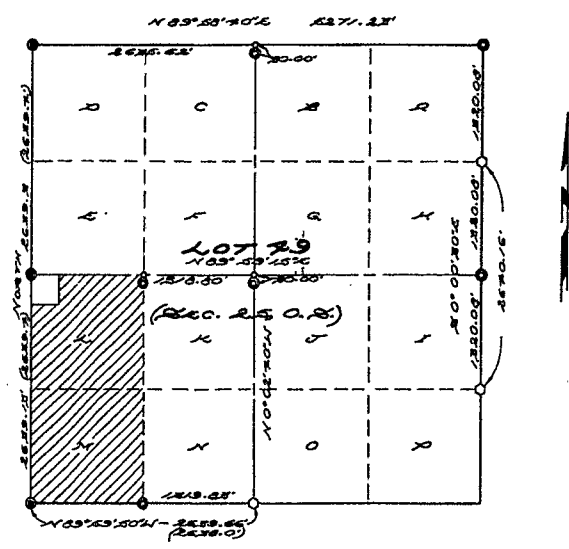
APRIL 13 1980
Rutha Greenfield

SUBDIVISION PERMIT

A SUBDIVISION PERMIT IS HEREBY GRANTED FOR
 THE SUBDIVISION SHOWN HEREON THIS 14TH DAY OF
 FEBRUARY, 1980, BY THE COMMISSIONERS OF PARK
 COUNTY, WYOMING, AND THIS PLAT IS HEREBY RE-
 APPROVED.

Marie Fortner
 Marie Fortner
 COUNTY CLERK

T.55N., R.99W.



VICINITY MAP
 SCALE: 1" = 1000'

CERTIFICATE OF DEDICATION

THE UNDERSIGNED, DO HEREBY CERTIFY AS FOLLOWS: WE
 ARE THE OWNERS OF LOTS 29-L AND 29-M, T.55N., R.99W. OF THE 6TH AM. RESUBDIVISION, PARK
 COUNTY, WYOMING. EXCEPT THEREFROM A PART OF
 LAND DESCRIBED AS THE NORTH DEL RIO, PART OF
 THE NORTH DEL RIO, PART OF LOTS 29-L AND 29-M,
 CONVEYED IN DEED TO US BY THE CLERK
 OF PARK COUNTY, WYOMING. WE HAVE GRANTED
 AND DO HEREBY GRANT TO THE PUBLIC THE RIGHT OF
 WAY THROUGH THE RESUBDIVISION OF LAND SHOWN
 HEREON ON THIS PLAT AS LOTS 29-L AND 29-M
 AND IN ACCORDANCE WITH THE PROVISIONS OF THE
 WYOMING CONSTITUTION AND STATUTES, THE
 RESUBDIVISION SHALL BE KNOWN HEREAFTER AS
 "NORTH DEL RIO". WE HEREBY DEDICATE
 AND SET ASIDE THE HEREIN AS SHOWN HEREON
 TO THE USE OF THE GENERAL PUBLIC. WE HEREBY
 RELEASE AND RELINQUISH ALL RIGHTS OF
 OWNERSHIP.

IN WITNESS WHEREOF WE HAVE HERETOFORE SET
 OUR HANDS THIS 14TH DAY OF FEBRUARY, 1980.

OCTOBER 2 (A FORTYSECOND)
Paul A. Blough *William P. McKinzie*
 Paul A. Blough William P. McKinzie
 (REGISTERED LAND SURVEYOR IN WYO.) (REGISTERED)

STATE OF WYOMING }
 COUNTY OF PARK }
 THE FOREGOING CERTIFICATE WAS ACKNOWLEDGED
 BEFORE ME BY PAUL A. BLOUGH AND WILLIAM P. MCKENZIE
 THIS 14TH DAY OF FEBRUARY, 1980.
 NOTARIAL MY HAND AND OFFICIAL SEAL.

Thomas J. Smith
 Thomas J. Smith
 NOTARY PUBLIC

MY COMMISSION EXPIRES 5/4/80

PLAT SHOWN
 NORTH DEL RIO
 BEING PART OF
 LOTS 29-L & 29-M,
 T.55N., R.99W. OF THE 6TH AM.
 RESUBDIVISION, PARK COUNTY, WYOMING
 REVISION DATE: _____