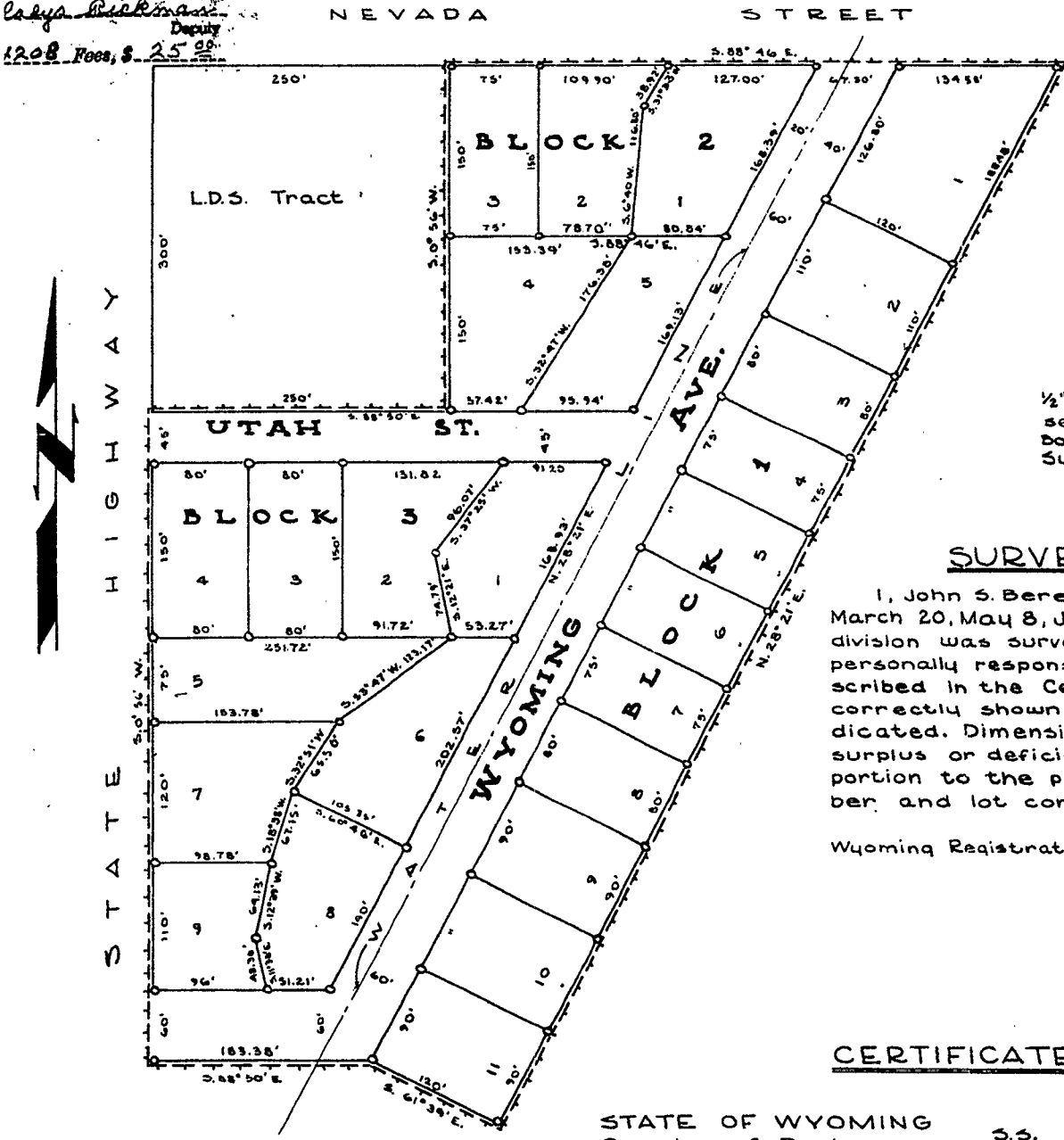


Wyoming,
of Park, ss.
ument was filed for record
7 day of November
at 1:15 o'clock P.M., and
rded in Book 2
on page 173
Edna E. Owen
Register of Deeds
Cody, Wyoming
1208 Fees, \$ 25.00

Bk 4E pg. 47



APPROVALS

Approved this 12 day of August, 1961, by the Town Council of the town of Meeteetse, Wyo- Park County, Wyoming.

Approved this 12 day of August, 1961, by the Commissioners of the town of Meeteetse, Wyo- Park County, Wyoming.

Edna E. Owen Mayor
Frank D. McAllen Chairman

Attest *Rita M. Larkin* Attest *Ken E. Larson*

LEGEND

1/2"x18" GALVANIZED PIPE CORNERS set during survey shown thus: _____

BOUNDARY OF LANDS INCLUDED IN OWEN SUBDIVISION SHOWN THUS: - - - - -

SURVEYORS CERTIFICATE

I, John S. Bereman, of Cody, Wyoming, hereby certify that on March 20, May 8, June 27-30, and July 1 & 5, 1961, the Owen Subdivision was surveyed by Hugo Kuiva, for whose work I stand personally responsible; that the subdivision is correctly described in the Certificate of Dedication; that the same is correctly shown on this plat which is drawn to the scale indicated. Dimensions are given in feet and decimals and any surplus or deficiency existing is distributed uniformly in proportion to the plat dimensions. Each lot bears its own number and lot corners are marked as shown hereon.

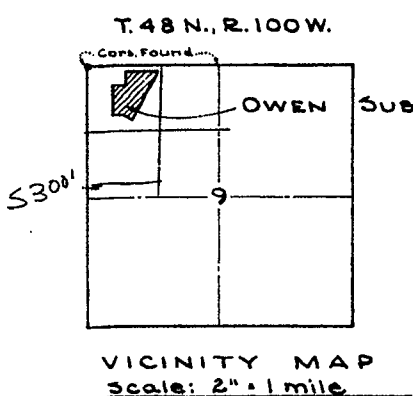
Wyoming Registration No. 355
John S. Bereman
John S. Bereman

CERTIFICATE OF DEDICATION

STATE OF WYOMING ss.
County of Park

We, the undersigned, hereby certify that we are the owners and proprietors of a tract of land within the NW 1/4 NW 1/4 Section 9, T. 48 N., R. 100 W. of the 6th P.M., Wyoming, which tract is more particularly described as follows: From the northwest corner of said Section 9, thence S. 88° 50' E. along the north line of Section 9 for a distance of 750 feet; thence S. 0° 56' W. for a distance of 93.56' to a point on the south line of Nevada Street in the Town of Meeteetse, Wyoming, WHICH IS THE POINT OF BEGINNING OF THE TRACT HEREIN DESCRIBED; thence S. 0° 56' W. for a distance of 300 feet; thence N. 88° 50' W. for a distance of 250 feet, to the east right-of-way line of the Wyoming State Highway designated as Park County Road No. 68e; thence S. 0° 56' W. along said highway right-of-way line for a distance of 560 feet; thence S. 88° 50' E. for a distance of 183.38 feet; thence S. 61° 39' E. for a distance of 120 feet; thence N. 28° 21' E. for a distance of 1028.88 feet to the south line of said Nevada Street; thence westerly along the south line of Nevada Street for a distance of 514.43 feet to the point of beginning. That we have caused said described land to be surveyed and platted as the Owen Subdivision as shown hereon; that the Subdivision as shown on the plat is with the free consent and in accordance with the desires of the undersigned owners and proprietors and that we hereby dedicate and set apart the streets shown hereon to the general public forever. We hereby relinquish all rights of homestead. In witness whereof, we have hereunto set our hands this 27th day of July, 1961.

Sarah E. Owen
Sarah E. Owen
Lloyd K. Owen
Lloyd K. Owen
Greta F. Owen
Greta F. Owen
Angus F. Linton
Angus F. Linton, Legal Guardian of Frank F. Owen, Jr.



PLAT SHOWING OWEN SUBDIVISION
IN SECTION 9, T. 48 N., R. 100 W.
PARK COUNTY, WYOMING

John S. Bereman & Co. - Cody, Wyoming
Engineering Consultants

July, 1961

STATE OF WYOMING ss.
County of Park

On this 29th day of July, 1961, before me personally appeared the persons described in the foregoing instrument and acknowledged that they executed the same as their free act and deed, including the release and waiver of the right of homestead.

James W. Howard
Notary Public
My commission expires December 31, 1962