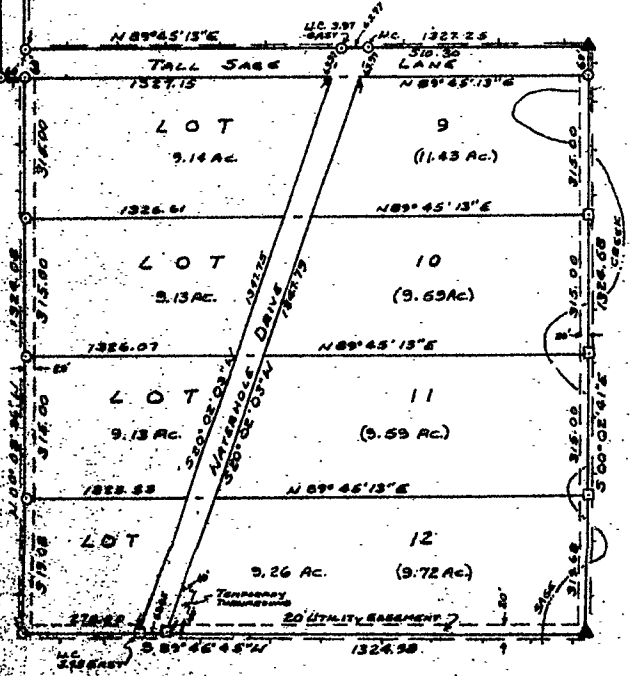


**LEGEND**  
 FOUND BRASS CAP MONUMENT SHOWN THUS  
 FOUND 1" DIAMETER IRON PIPE MONUMENT SHOWN THUS  
 FOUND 3" DIAMETER STEEL CAP MONUMENT SHOWN THUS  
 FOUND 2" DIAMETER IRON PIPE IN CONCRETE SHOWN THUS  
 2" DIAMETER ALUMINUM CAP MONUMENT SET THIS SURVEY SHOWN THUS  
 1" DIAMETER ALUMINUM CAP MONUMENT SET THIS SURVEY SHOWN THUS  
 TOTAL ACREAGE EACH LOT SHOWN THUS  
 ACREAGE EACH LOT EXCLUSIVE OF ROADS SHOWN THUS  
 SUBDIVISION BOUNDARY SHOWN THUS

TOTAL NUMBER OF LOTS IN SUBDIVISION IS 12.

DETAIL MAP  
 SCALE: 1" = 200'



**APPROVAL**  
**SUBDIVISION PERMIT**  
 A SUBDIVISION PERMIT IS HEREBY GRANTED FOR THE SUBDIVISION SHOWN HEREON THIS 30 DAY OF APRIL 1980, BY THE COMMISSIONERS OF PARK COUNTY, WYOMING, AND THIS PLAN IS HEREBY APPROVED.

ATTEST:  
 County Clerk

NO PROPOSED PUBLIC SEWAGE DISPOSAL SYSTEM  
 NO PROPOSED DOMESTIC WATER SOURCE  
 NO PUBLIC MAINTENANCE OF STREETS OR ROADS

Sage Creek #2  
 County says vacation  
 is good -  
 not a subdivision anymore.

**CERTIFICATE OF DEDICATION**

STATE OF WYOMING } S.S.  
 COUNTY OF PARK }  
 THE UNDERSIGNED DO HEREBY WEASE THE OWNERS OF THE FOLLOWING

LOT 57 (SECTION 2 ORIG. SURV.): SW 1/4 SW 1/4  
 LOT 53 (SECTION 10 ORIG. SURV.): SW 1/4 NW 1/4  
 LOT 52 (SECTION 10 ORIG. SURV.): NE 1/4 NE 1/4 - EAST 60 FEET THEREOF.  
 SE 1/4 NE 1/4 - NORTH 60 FEET OF THE EAST 60 FEET THEREOF.

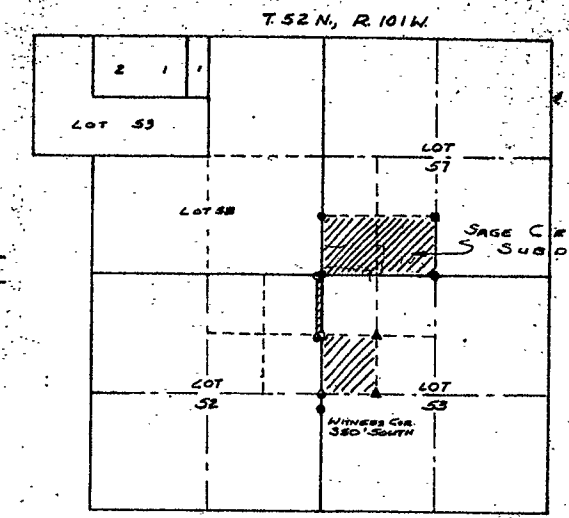
WE HAVE CAUSED SAID LANDS TO BE SUBDIVIDED AND PLATTED AS SHOWN HEREON. THE SUBDIVISION OF SAID LANDS AS APPEARS ON THIS PLAN IS WITH THE FREE CONSENT AND IN ACCORDANCE WITH THE DESIRES OF THE UNDERSIGNED OWNERS AND PROPRIETORS. THE SUBDIVISION SHALL BE KNOWN AS SAGE CREEK SUBDIVISION No. 2. WE HEREBY DEDICATE AND SET APART SUCH SAID LANDS TO THE PUBLIC AS SHOWN HEREON TO THE USE OF THE GENERAL PUBLIC. ALL OTHER ROADS AND EASEMENTS CREATED BY THIS SUBDIVISION ARE FOR THE PRIVATE JOINT USE OF THE OWNERS OF THIS SUBDIVISION. WE HEREBY RELEASE AND RELINQUISH ALL RIGHTS OF HOMESTEAD. IN WITNESS WHEREOF WE HAVE HEREBY SET OUR HANDS THIS 26TH DAY OF FEBRUARY, 1980.

Robert W. (BERT) SCHULTZ  
 IRENE SCHULTZ

STATE OF WYOMING } S.S.  
 COUNTY OF PARK }

THE FOREGOING CERTIFICATE HAS BEEN ACKNOWLEDGED BEFORE ME BY ROBERT W. (BERT) SCHULTZ AND IRENE SCHULTZ THIS 26TH DAY OF FEBRUARY, 1980. WITNESS MY HAND AND OFFICIAL SEAL.

MY COMMISSION EXPIRES: August 3, 1981



**LEGEND**  
 FOUND BRASS CAP MONUMENT SHOWN THUS  
 FOUND 1" DIAMETER IRON PIPE MONUMENT SHOWN THUS  
 FOUND 3" DIAMETER STEEL CAP MONUMENT SHOWN THUS  
 FOUND 2" DIAMETER IRON PIPE IN CONCRETE SHOWN THUS  
 2" DIAMETER ALUMINUM CAP MONUMENT SET THIS SURVEY SHOWN THUS  
 1" DIAMETER ALUMINUM CAP MONUMENT SET THIS SURVEY SHOWN THUS

**CERTIFICATE OF SURVEYOR**

STATE OF WYOMING } S.S.  
 COUNTY OF PARK }

I, WESLEY H. REED, A LAND SURVEYOR REGISTERED IN WYOMING BY REGISTRATION NO. 537 L.S., HEREBY CERTIFY AS FOLLOWS: BETWEEN 14 JANUARY, 1980 AND 23 FEBRUARY, 1980 THE SAGE CREEK SUBDIVISION No. 2 SHOWN HEREON WAS SURVEYED BY ME. THE LAND IS CORRECTLY DESCRIBED IN THE OWNERS CERTIFICATE OF DEDICATION AND THE SUBDIVISION THEREOF IS CORRECTLY SHOWN ON THIS PLAN WHICH IS DRAWN TO THE SCALE INDICATED. DIMENSIONS ARE GIVEN IN FEET AND DECIMALS. DIRECTIONS ARE GIVEN IN DEGREES, MINUTES AND SECONDS OF ARC AND ARE REFERRED TO THE TRUE MERIDIAN WHICH HAS DETERMINED FROM A BEARING OF N89°43'35"E. ALONG THE SOUTH LINE OF LOT 57, EAST OR OBLITERATED LAND CORNER MONUMENTS WERE RESTORED AS REQUIRED. SUBDIVISION OF SECTIONS, LOTS OR TRACTS INTO ALIQUOT PARTS HAS BEEN DONE AS REQUIRED. CERTIFIED LAND CORNER RECORDATION CERTIFICATES HAVE BEEN RECORDED IN THE OFFICE OF THE PARK COUNTY CLERK FOR EVERY SURVEYING MONUMENT RECOVERED DURING THE SURVEY OF THIS SUBDIVISION. IN ACCORDANCE WITH THE REQUIREMENTS OF W.S. 36-11-101 THROUGH 36-11-110. MONUMENTS SHOWN AND ALL LOT CORNERS MARKING THIS SURVEY WERE ACTUALLY SET AND THE MONUMENTS ARE AS DESCRIBED HEREON. ALL CLAIMS OF THE SURVEY CLOSE TO AN ACCURACY OF ONE PART IN FIVE THOUSAND OR BETTER.

Wesley H. Reed  
 WESLEY H. REED

STATE OF WYOMING } S.S.  
 COUNTY OF PARK }

THE FOREGOING CERTIFICATE HAS BEEN ACKNOWLEDGED BEFORE ME BY WESLEY H. REED, THIS 26TH DAY OF FEBRUARY, 1980. WITNESS MY HAND AND OFFICIAL SEAL.

PLAT OF  
 SAGE CREEK SUBDIVISION No. 2

A SUBDIVISION OF  
 SW 1/4 OF LOT 57,  
 SW 1/4 NW 1/4 OF LOT 53  
 PART OF NE 1/4 LOT 52  
 T. 52 N., R. 101 W., 6TH PM.

Cancelled  
 9/17/84