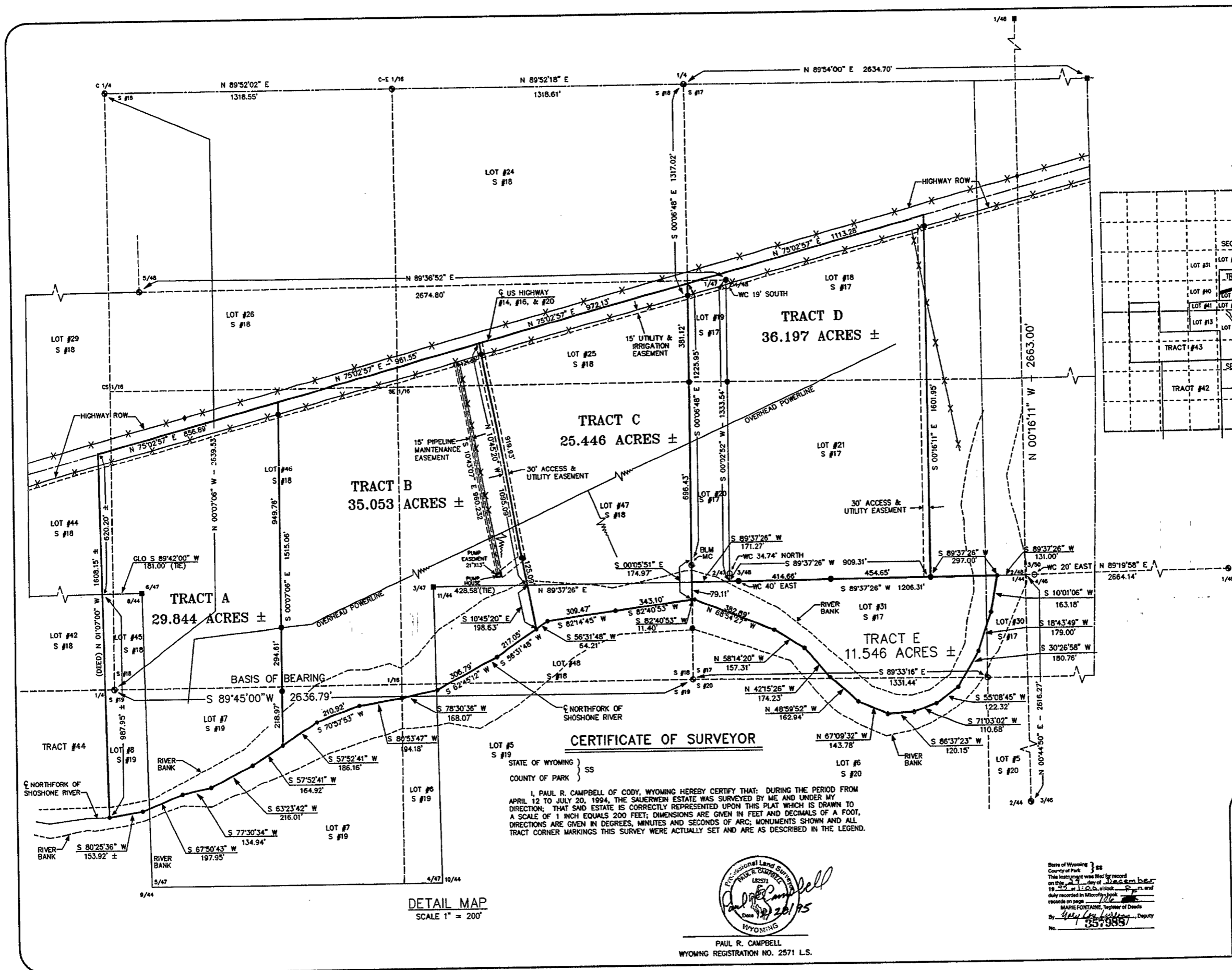
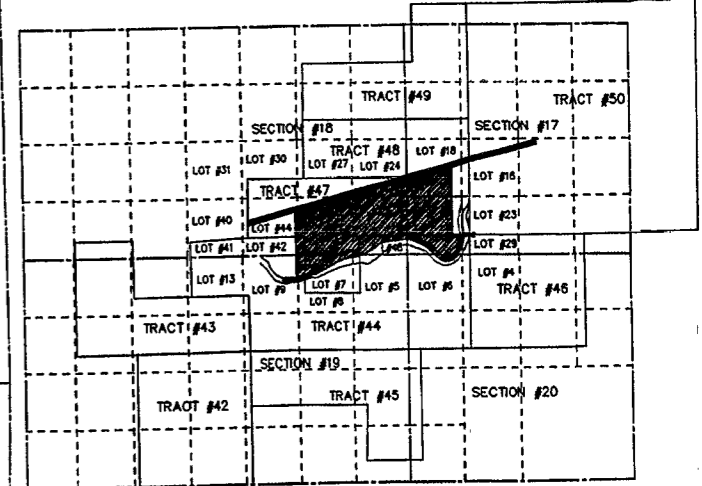


18



T.52N. R.104W.



SCALE 1" = 2000'

LEGEND

- = SET 1-1/2" AL. CAP ON #5X24" REBAR
- ⊙ = FOUND STANDARD BLM BRASS CAP
- ⊙ = FOUND STANDARD PRIVATE BRASS CAP
- = FOUND GLO STONE
- = SET 3-1/4" AL. CAP ON 2-1/2"X30" AL. PIPE
- ◆ = FOUND REBAR AND AL. CAP
- = ANGLE POINT
- MC = MEANDER CORNER
- WC = WITNESS CORNER

CERTIFICATE OF SURVEY

STATE OF WYOMING }
 COUNTY OF PARK } SS

I, PAUL R. CAMPBELL OF CODY, WYOMING HEREBY CERTIFY THAT: DURING THE PERIOD FROM APRIL 12 TO JULY 20, 1994, THE SAUERWEIN ESTATE WAS SURVEYED BY ME AND UNDER MY DIRECTION; THAT SAID ESTATE IS CORRECTLY REPRESENTED UPON THIS PLAT WHICH IS DRAWN TO A SCALE OF 1 INCH EQUALS 200 FEET; DIMENSIONS ARE GIVEN IN FEET AND DECIMALS OF A FOOT, DIRECTIONS ARE GIVEN IN DEGREES, MINUTES AND SECONDS OF ARC; MONUMENTS SHOWN AND ALL TRACT CORNER MARKINGS THIS SURVEY WERE ACTUALLY SET AND ARE AS DESCRIBED IN THE LEGEND.



PAUL R. CAMPBELL
 WYOMING REGISTRATION NO. 2571 L.S.

State of Wyoming }
 County of Park } SS
 This instrument was filed for record on this 11th day of December 1995 at 11:02 a.m. and duly recorded in Microfilm book records on page 357985
 MARIE FONTAINE, Register of Deeds
 By: [Signature] Deputy
 No. 357985

AMENDED RECORD OF SURVEY

SHOWING
 SAUERWEIN ESTATE
 TRACT A, B, C, D, & E
 IN T. 52 N., R. 104 W.,
 6th P.M. PARK COUNTY, WY.

CAMPBELL & ASSOCIATES LAND SURVEYORS
 CODY, WYOMING DECEMBER 28, 1995
 W.O. 9450 V-1, BK-A165, PG-1