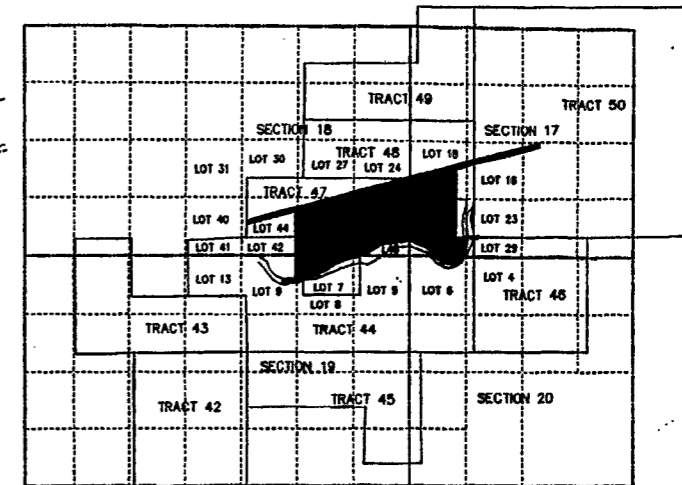


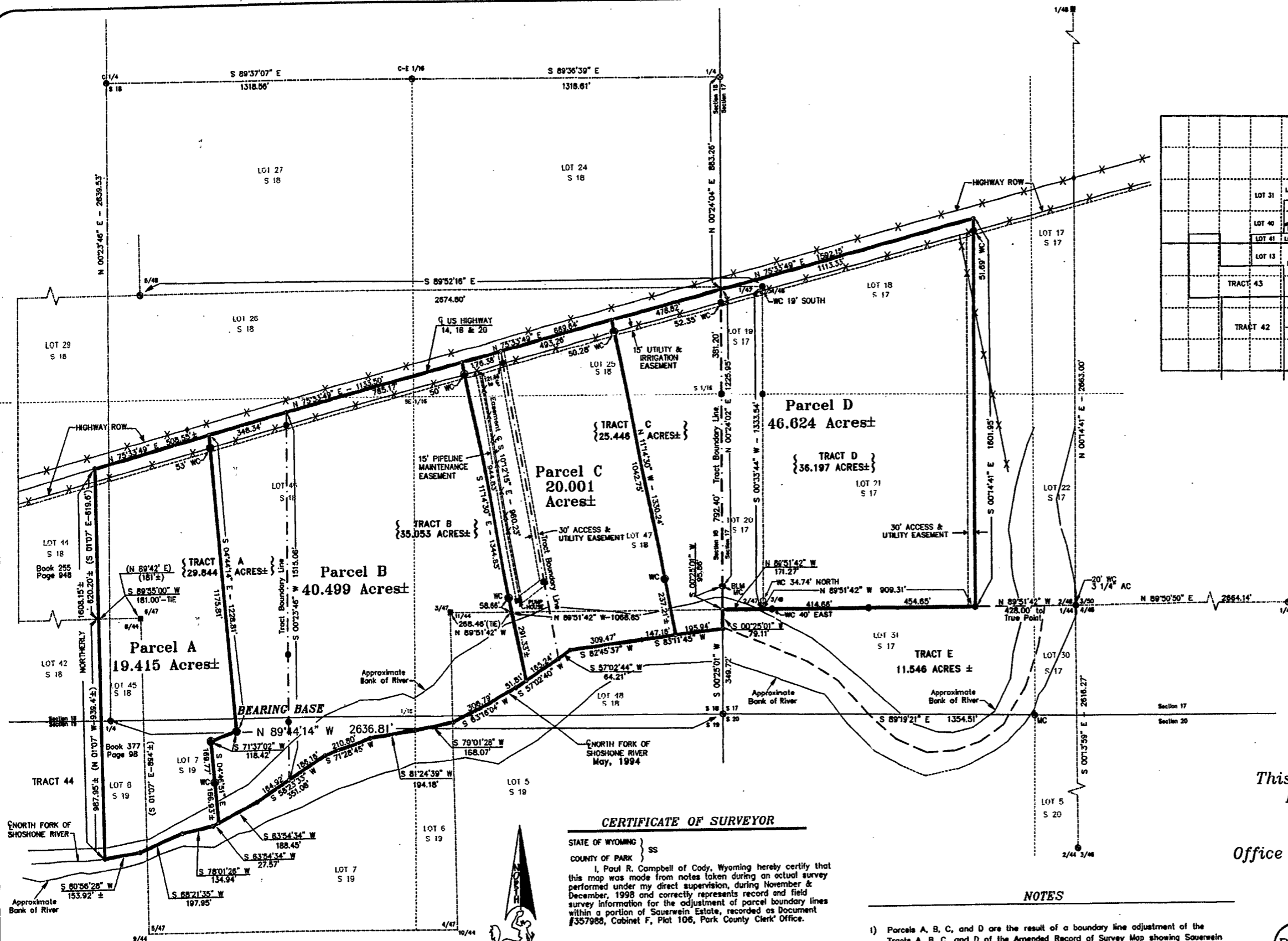
Resurvey
T.52N. R.104W.



LOCATION MAP
SCALE 1" = 2000'

LEGEND

- = Found Standard B.L.M. Brass Cap
- ⊙ = Found Standard Private Brass Cap
- = Found G.L.O. Stone
- ⊗ = SET 2" Alum. Cap on #5 x 24" Rebar THIS Survey
- ⊙ = Found Alum. Cap on #5 x 24" Rebar
- = Found 3-1/4" Alum. Cap on 2 1/2"x30" Alum. Pipe
- ⬢ = Found Rebar & Aluminum Cap
- ⊙ = Angle Point
- MC = Meander Corner
- WC = Witness Corner
- () = Record Dimension
- X-X- = Fence Line
- - - - - = G.L.O. Section Lot line
- - - - - = G.L.O. Tract Line
- - - - - = Sauerwein Estate Tract Line
- - - - - = New Boundary Lines



CERTIFICATE OF SURVEYOR

STATE OF WYOMING } SS
 COUNTY OF PARK }
 I, Paul R. Campbell of Cody, Wyoming hereby certify that this map was made from notes taken during an actual survey performed under my direct supervision, during November & December, 1998 and correctly represents record and field survey information for the adjustment of parcel boundary lines within a portion of Sauerwein Estate, recorded as Document #357988, Cabinet F, Plat 106, Park County Clerk's Office.



PAUL R. CAMPBELL

NOTES

- 1) Parcels A, B, C, and D are the result of a boundary line adjustment of the Tracts A, B, C, and D of the Amended Record of Survey Map showing Sauerwein Estate, recorded as Document # 357988, Cabinet F, Plat 106, Office of the Park County Clerk.
- 2) Bearing Base for this survey is N 89°44'04" W between the southeast corner and the south 1/4 of Section 18. The Bearing Base on Doc. #357988 is S 89°45'00" W corresponding to the same line.
- 3) Book and page numbers for deeds are on file in the Office of the Park County Clerk.
- 4) Centerline of the North Fork of the Shoshone River is Approximate and determined from a May, 1994 survey.

This is an AMENDMENT of
 Doc #1998-8666, in
 Cabinet G, Plat 3
 on file in the
 Office of the Park County Clerk

**AMENDED
 Record of Survey**

SHOWING
BOUNDARY LINE ADJUSTMENTS
 in reference to
 Tracts A, B, C & D
 within
 Sauerwein Estate
 in Resurvey T.52N., R.104W.,
 6th P.M. Park County, WY

DETAIL MAP
SCALE 1" = 200'

State of Wyoming
 County of Park
 This instrument was filed for record on the 12th day of December, 1998 at 10:15 AM.
 and duly recorded in the Plat Book of Park County, Wyoming, Book 377, Page 98.
 W. M. GARDNER, Park County Clerk
 My Comm. Expires 12/31/2001