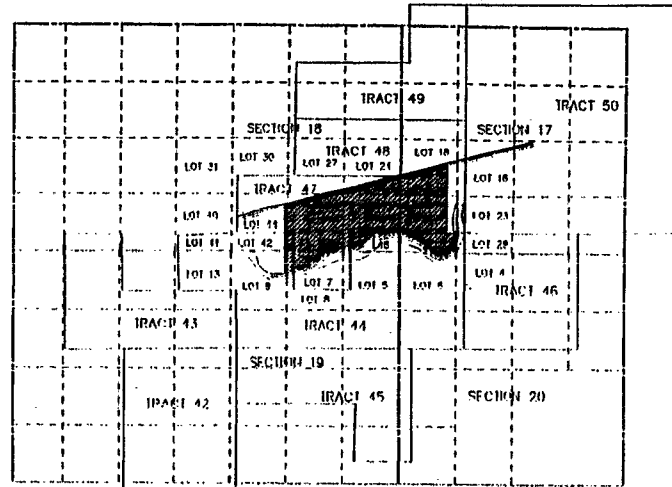


Resurvey
T.52N. R.104W.



LOCATION MAP
SCALE 1" = 2000'

LEGEND

- - Found Standard B.I.M. Brass Cap
- ⊙ - Found Standard Private Brass Cap
- ⊙ - Found G.L.O. Stone
- ⊙ - SE 1/4 Alum. Cap on #5 x 24" Paban BHS Survey
- ⊙ - Found Alum. Cap on #5 x 24" Paban
- ⊙ - Found 3 1/4" Alum. Cap on 2 1/2" x 30" Alum. Pipe
- ⊙ - Found Paban & Aluminum Cap
- - Angle Point
- HC - Handset Corner
- WC - Witness Corner
- () - Record Dimension
- X - Fence Line
- - - - - G.L.O. Section Lot Line
- - - - - G.L.O. Tract Line
- - - - - Sauerwein Estate Tract Line
- - - - - New Boundary Lines

CERTIFICATE OF SURVEYOR

STATE OF WYOMING }
 } SS
COUNTY OF PARK }
I, Paul R. Campbell of Cody, Wyoming hereby certify that this map was made from notes taken during an actual survey performed under my direct supervision during November & December, 1998 and correctly represents record and field survey information for the adjustment of parcel boundary lines within a portion of Sauerwein Estate, recorded as Document # 357988, Cabinet 1, Plat 106, Park County Clerk Office.



PAUL R. CAMPBELL

NOTES

- 1) Parcels A, B, C, and D are the result of a boundary line adjustment of the Tracts A, B, C, and D of the Amended Record of Survey Map showing Sauerwein Estate, recorded as Document # 357988, Cabinet 1, Plat 106, Office of the Park County Clerk.
- 2) Bearing Base for this survey is N 89°44'04" W between the southern corner and the south 1/4 of Section 19. The Bearing Base on Doc. #357988 is S 89°45'00" W corresponding to the same line.
- 3) Book and page numbers for deeds are on file in the Office of the Park County Clerk.
- 4) Centerline of the North Fork of the Shoshone River is Approximate and determined from a Dec. 1994 survey.

DETAIL MAP
SCALE 1" = 200'

Record of Survey

SHOWING
BOUNDARY LINE ADJUSTMENTS
in reference to
Tracts A, B, C & D
within
Sauerwein Estate
in Resurvey T.52N., R.104W.,
6th P.M. Park County, WY

97

December 11, 1998
Paul R. Campbell
1097-86166