

Certificate

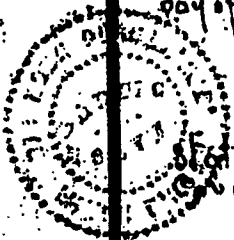
State of Wyoming
County of Big Horn ss.

I, C.E. Hayden, of Cody Wyoming, being duly sworn depose and say that the following plat correctly represents the location and description of Schwob's Addition to Cody Wyoming which covers 597 feet along the west side of the S.E. 1/4 of the S.E. 1/4 of Section 29 Township 53 N Range 101 West of 11th P.M. That the streets are north and south and the avenues are east and west. That the S.E. Corner of said subdivision is a Government Corner and that the subdivision is rectangular and 1320 feet each way. That the measurement was made with a new steel chain tested correct and further that the plat was surveyed by instruction of the owner of the said land.

C.E. Hayden

Signed and sworn to before me this 20th day of April A.D. 1906

Frank K. Hoyt
Notary public



State of Wyoming ss.
County of Big Horn ss.

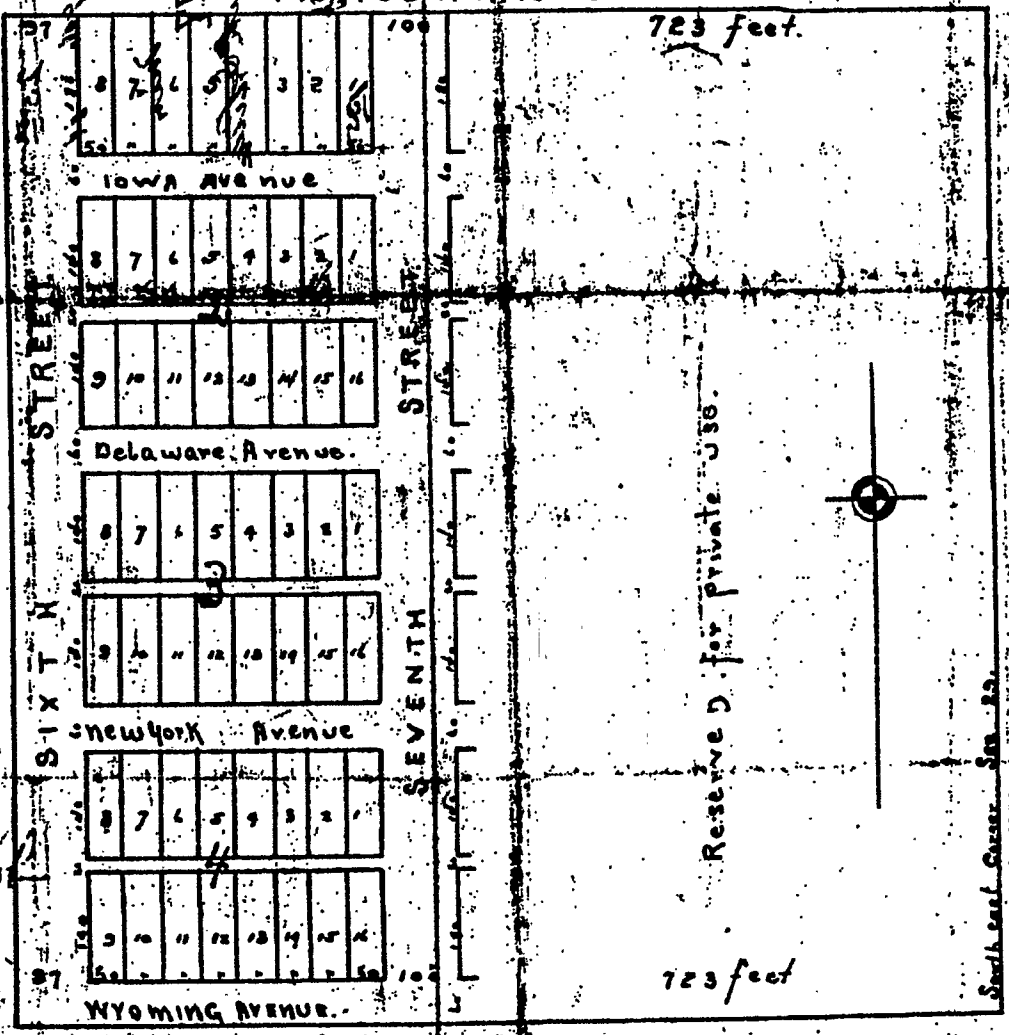
I, Jacob M. Schwob, being duly sworn: say that the survey of the following described tract of land, to wit: 597 feet along the west side of the S.E. 1/4 of the S.E. 1/4 of Section 29 Township 53 N. Range 101 W. and known as Schwob's Addition to Cody Wyoming is made with my full consent and that this plat is filed in accordance with my full desire.

Signed and sworn to this 20th day of April A.D. 1906

Jacob M. Schwob
owner & proprietor
Frank K. Hoyt
Notary Public
County Clerk

SCHWOB'S ADDITION
TO
CODY
WYOMING

J.M. SCHWOB owner.
597 feet on west side of S.E. 1/4 of S.E. 1/4 of Section 29
TWP. 53 N. R. 101 W



#10,7958
Location of Plat December 20, 1902,
Recorded in Book 274, Page 91
by Husky Oil Company

For records, see Big Horn County Deeds
Book 9, Page 280 No. 22154