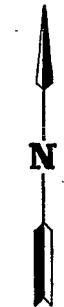
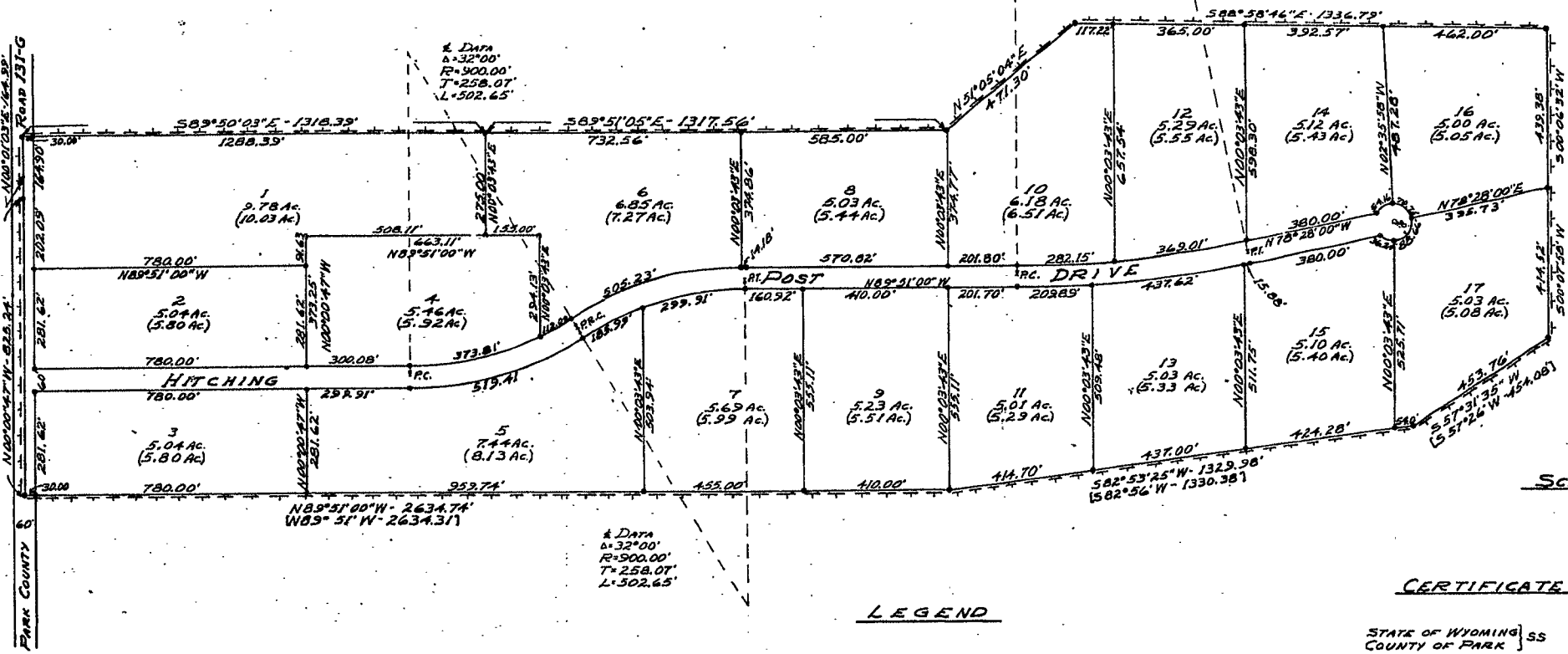


LOCATION MAP  
SCALE: 1" = 500'



SCALE: 1" = 200'



**LEGEND**

BOUNDARY OF "SHAPAR-EL ESTATES" \_\_\_\_\_  
 MONUMENTS FOUND IN PLACE \_\_\_\_\_  
 BEARINGS AND DISTANCES OF RECORD \_\_\_\_\_ [S 82° 56' W - 130.38]  
 BEARINGS AND DISTANCES TO MONUMENTS FOUND IN PLACE \_\_\_\_\_ [S 82° 53' 25" W - 1329.98]  
 GROSS LOT ACREAGE TO ROAD CENTERLINES \_\_\_\_\_ (5.51 Ac.)  
 NET LOT ACREAGE WITHIN LOT BOUNDARIES \_\_\_\_\_ 5.23 Ac.

**CERTIFICATE OF DEDICATION**

STATE OF WYOMING } ss  
 COUNTY OF PARK

WE THE UNDERSIGNED DO HEREBY CERTIFY THAT WE ARE THE OWNERS AND PROPRIETORS OF FARM UNIT "C", ACCORDING TO THE FARM UNIT PLAT LOCATED IN SECTIONS 21 AND 22, PARBURY, TOWNSHIP 53 NORTH, RANGE 101 WEST OF THE 6TH PRINCIPAL MERIDIAN, PARK COUNTY, WYOMING, BEING MORE PARTICULARLY DESCRIBED AS FOLLOWS:

SECTION 21: SW 1/4 SW 1/4 NE 1/4, SW 1/4 SW 1/4 NE 1/4, NW 1/4 SW 1/4 NE 1/4, NW 1/4 SE 1/4 NE 1/4, NE 1/4 SW 1/4 NE 1/4, AND NW 1/4 SW 1/4 NE 1/4;  
 SECTION 22: LOTS 9, 10, AND 12.

THAT WE HAVE CAUSED SAID DESCRIBED LAND TO BE SURVEYED AND PLATTED AS SHOWN HEREON AS THE "SHAPAR-EL ESTATES", THAT THE SUBDIVISION AS APPEARS ON THIS PLAT IS WITH THE FREE CONSENT AND IN ACCORDANCE WITH THE DESIRES OF THE UNDERSIGNED OWNERS AND PROPRIETORS; AND WE HEREBY DEDICATE AND SET APART THE STREETS AND EASEMENTS SHOWN HEREON TO THE USE OF THE GENERAL PUBLIC. WE HEREBY RELEASE AND RELINQUISH ALL RIGHTS OF HOMESTEAD.

IN WITNESS WHEREOF, WE HAVE HEREUNTO SET OUR HAND THIS 17th DAY OF March, 1976.

William E. Ross      John T. Ross  
 William E. Ross      John T. Ross  
Weldon Arthur      Weldon Arthur  
 Weldon Arthur      Weldon Arthur  
George Parker      George Parker  
 George Parker      George Parker

STATE OF WYOMING } ss  
 COUNTY OF PARK

THE FOREGOING INSTRUMENT WAS ACKNOWLEDGED BEFORE ME BY WILLIAM E. ROSS AND JOHN T. ROSS, WELDON ARTHUR AND GEORGE PARKER, AND GEORGE PARKER AND JOHN T. ROSS THE LILLDAY OF March, 1976. WITNESS MY HAND AND OFFICIAL SEAL.

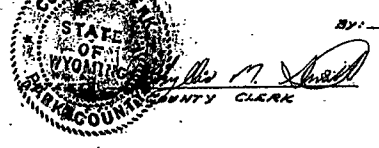
My Commission Expires: November 4, 1979  
 Notary Public

**NO PROPOSED PUBLIC SEWAGE DISPOSAL SYSTEM  
 NO PROPOSED DOMESTIC WATER SOURCE**

State of Wyoming } ss  
 County of Park  
 This instrument was filed for record on the 3 day of March, 1976 at 3:15 o'clock P.M. and duly recorded in Book 108 records on page 108  
Phyllis M. Smith  
 Register of Deeds  
 By Edna Kessler  
 Deputy  
 No. (SP) 768 Fees, \$25.00

**APPROVALS**

APPROVED THIS 3 DAY OF March, 1976, BY THE COMMISSIONERS OF PARK COUNTY, WYOMING, SUBJECT TO THE PROVISIONS OF THE PARK COUNTY POLICY ON MAINTAINING AND IMPROVING COUNTY ROADS, ADOPTED MARCH 5, 1975.



By: W. B. ...  
 CHAIRMAN

**CERTIFICATE OF SURVEYOR**

STATE OF WYOMING } ss  
 COUNTY OF PARK

I, NORMAN L. SMITH OF CODY, WYOMING, HEREBY CERTIFY THAT DURING THE PERIOD COMMENCING ON JANUARY 26, 1976 AND ENDING ON FEBRUARY 13, 1976 THE "SHAPAR-EL ESTATES" WAS SURVEYED BY ME AND UNDER MY DIRECTION; THAT SAID SUBDIVISION IS CORRECTLY DESCRIBED IN THE OWNER'S CERTIFICATE OF DEDICATION ON THIS PLAT WHICH IS DRAWN TO A SCALE OF 1" = 200'. THE DIMENSIONS OF LOTS AND WIDTHS OF STREETS ARE GIVEN IN FEET AND DECIMALS OF A FOOT, AND ANY SURPLUS OR DEFICIENCY IS DISTRIBUTED UNIFORMLY IN PROPORTION TO THE MEASUREMENTS SHOWN ON THE PLAT. EACH LOT BEARS ITS OWN NUMBER. ALL LOT CORNERS SET THIS SURVEY ARE 1/2" X 20" REBAR WITH ALUMINUM CAPS MARKED TO INDICATE EACH LOT NUMBER. ALL BEARINGS ARE BASED ON AN INITIAL BEARING OF N 89° 51' 00" W ALONG THE SOUTH LINE OF SAID SUBDIVISION (THAT PORTION WITHIN SAID SECTION 21, BEING IDENTICAL WITH THE NORTH LINE OF SCHNEIDER SUBDIVISION RECORDED IN PARK COUNTY, WYOMING).

WYOMING REGISTRATION NO. 523 L.S. Norman L. Smith  
 NORMAN L. SMITH

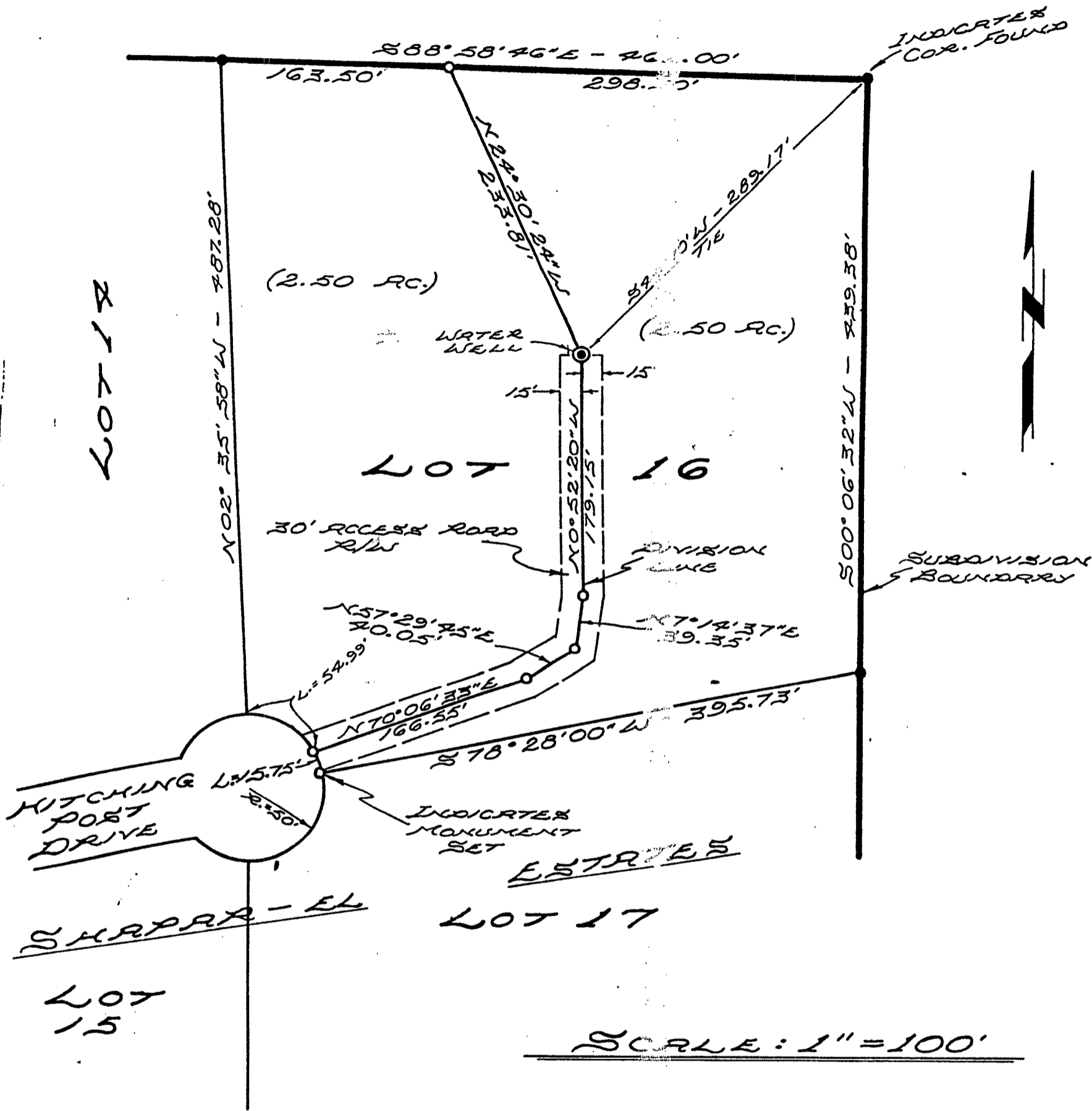


PLAT NO.	1071 15
DATE	1-20-76
PREPARED BY	1-11-76
FILED	2-11-76
OTHERS	

PLAT SHOWING  
**SHAPAR-EL ESTATES**  
 IN SECTIONS 21 & 22, T.53N., R.101W.  
 OF THE 6th P.M., PARK COUNTY, WYOMING  
 NORMAN L. SMITH      LAND SURVEYOR  
 CODY, WYOMING      FEBRUARY, 1976

T. 53 N., R. 21 W.

BOOK 170 PAGE 804



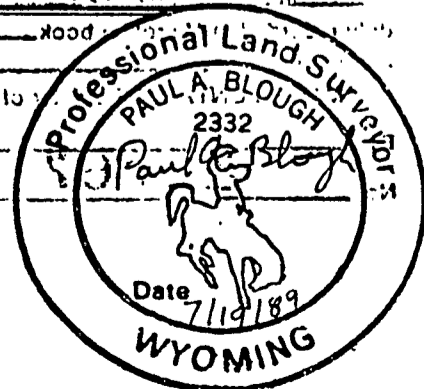
SCALE: 1" = 100'

This instrument was filed for record in the County of Park State of Wyoming

EXHIBIT

ARRAN FRAYLEY  
 CODY, WYOMING  
 PLAT SHOWING  
 DIVISION OF LOT 16  
 IN SHARRAR-EL ESTATE  
 PARK COUNTY, WYOMING

HOLM, BLOUGH & CO. — ENGINEERING & SURVEYING  
 CODY, WYOMING JAN., 1988



BOOK NO. 170 PAGE NO. 804-11