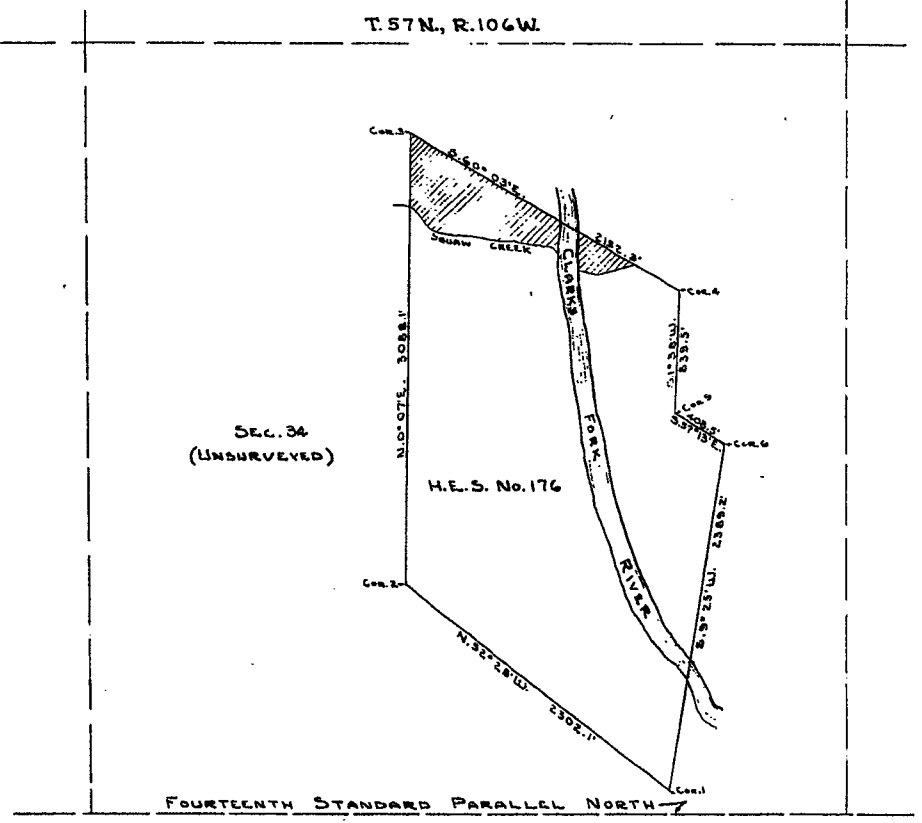


SCALE 1" = 100'
LEGEND

- Stone Corners of H.E.S. No. 176.....—○—
- Boundary of Subdivision.....—+—+—+—
- Access Easements.....—- - - - -



LOCATION MAP
 SCALE 1" = 660'

CERTIFICATE OF DEDICATION

STATE OF WYOMING } ss
 County of Park }
 We, the undersigned Alvin Cary and Garnet E. Cary, husband and wife, do hereby certify that we are the owners of H.E.S. No. 176, T. 57N., R. 106W. of the G.P.M. Wyoming and that we have caused a portion of said H.E.S. No. 176 to be surveyed and plotted as shown hereon; that the plot of "Squaw Creek Subdivision" is with the free consent and in accordance with the desires of the owners and proprietors and shall be known as "Squaw Creek Subdivision" in H.E.S. No. 176, Park County, Wyoming; that we hereby set apart all access easements as shown hereon for the use of ingress and egress for the subdivision.
 IN WITNESS WHEREOF we have hereunto set our hands this 2 day of January, 1962.
 Alvin Cary
 Garnet E. Cary

CERTIFICATE OF SURVEYOR

I, Jack Thornburgh, of Cody, Wyoming (hereby certified) that during the period from September 20 to September 22, 1961, the Squaw Creek Subdivision was surveyed by me; that said subdivision is correctly shown on this plat which is drawn to a scale of 1 inch equals 100 feet. The access easements and lots are dimensioned in feet and decimals of feet, and any surplus or deficiency existing is distributed within in proportion to the dimensions shown on this plat. Each lot bears its own number. The lot corners are marked by 3/4" galvanized pipe driven firmly in the ground.
 Jack Thornburgh
 Wyoming Reg. No. 528

APPROVAL

Approved this 6 day of February, 1962, by the Commissioner of Park County, Wyoming.
 By: Harold Kinrade
 Chairman
 Attest: Edna E. Ragan
 County Clerk

State of Wyoming, } ss
 County of Park, }
 This instrument was filed for record on the 24 day of April, 1962, at 12:25 o'clock P.M., and duly recorded in Book 2, records on page 177.
 By: Gladys Pickens
 Deputy Register of Deeds
 No. 125482 Fees, \$ 25.00

PLAT SHOWING
SQUAW CREEK SUBDIVISION
 IN HOMESTEAD ENTRY SURVEY NO. 176
 PARK COUNTY, WYOMING