

DETAIL MAP  
Scale: 11/200

**SURVEYORS' CERTIFICATE**

I, John W. Becker, of Cody, Wyoming hereby certify that between November 5 and November 18, 1968 the Stockhill Subdivision was surveyed by me and is correctly described in the Certificate of Dedication, that the same is correctly shown on this plat which is drawn to the scale indicated. Dimensions are given in feet and decimals and any surplus or deficiency existing is distributed uniformly in proportion to the plat dimensions.

The corners of Lot 67 were re-established using methods based upon instructions contained in the Bureau of Land Management Manual entitled Restoration of Lost or Obliterated Corners and Subdivision of Sections. The location map shows the existing corners found in place. Corners or witness corners re-established during this survey are marked as shown in the legend.

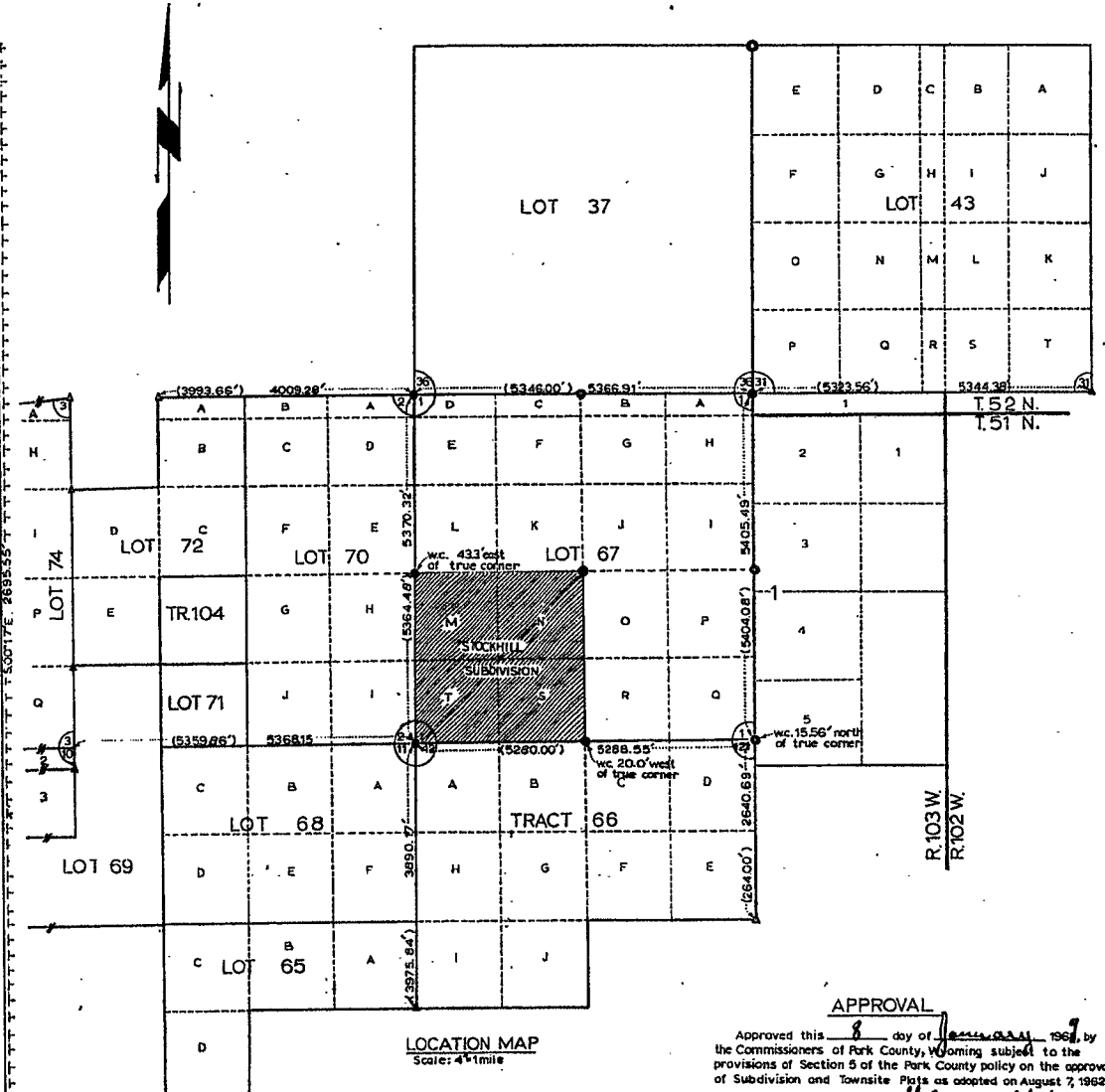
The bearings shown on this plat were deflected from a bearing, determined by solar observation, of S.00°09'W. along the east line of Lot 67 T.51N., R.103W.

Wyoming Registration No. 484 L.S. John W. Becker  
John W. Becker

**LEGEND**

- Stone corners found in place during this survey shown thus:  $\Delta$
- Brass cap corners found in place during this survey shown thus:  $\bullet$
- Brass cap corners set during this survey shown thus:  $\odot$
- 1/2" x 18" pipe corners set during this survey shown thus:  $\circ$
- Rail Road spike set in pavement during this survey shown thus:  $\bullet$
- Witness corners set during this survey shown thus:  $\circ$
- Distances as shown on G.L.O. Plats shown thus: (5359.66')
- Distances as chained in the field during this survey shown thus: 5368.15'
- Subdivision boundary shown thus:  $\cdots\cdots\cdots$
- Original section numbers shown thus:  $\text{---} \text{---} \text{---}$

**NOTE:** Bearings determined during this survey were deflected from a bearing of S.00°09'W. along the east line of lot 67 which was determined by Solar observation.



LOCATION MAP  
Scale: 4 1/2 miles

**CERTIFICATE OF DEDICATION**

STATE OF ILLINOIS ss.  
County of T.51 N., R.103 W.

We, the undersigned do hereby certify that we are owners and proprietors of SW 1/4 Section 11, T.51N., R.103W. of the S.10-T.4N., Wyoming according to the Original Government Survey and now Lots 67M, 67N, 67S and 67T of said township and Range according to the Government Resurvey, more particularly described as follows:

Beginning at the SW Corner of Lot 67T; thence N.00° 43' W. for 2688.52 feet to the NW Corner of Lot 67M; thence N.89° 54' E. for 2664.38 feet to the NE Corner of Lot 67N; thence S.00° 17' E. for 2695.55 feet to the SE Corner of Lot 67S; thence N.89° 56' W. for 2644.27 feet more or less to the point of beginning. Containing 164.0 acres more or less.

The bearings for the above described lots were deflected from a bearing, determined by solar observation, of S.00°09'W. along the east line of Lot 67, T.51N., R.103W.

That we have caused said described tract of land to be surveyed and plotted as shown hereon; that the above described or foregoing subdivision as appears on this plat is with free consent and in accordance with the desires of the undersigned owners and proprietors and shall be known as the Stockhill Subdivision.

We hereby release and relinquish all rights of homestead.

In witness whereof we have hereunto set our hands this \_\_\_\_\_ day of \_\_\_\_\_ 1968.

Thomas G. Ellledge      Constance Ives Ellledge  
Thomas G. Ellledge      Constance Ives Ellledge

The foregoing instrument was acknowledged before me this \_\_\_\_\_ day of \_\_\_\_\_ 1968.



**APPROVAL**

Approved this 8 day of January, 1968, by the Commissioners of Park County, Wyoming subject to the provisions of Section 5 of the Park County policy on the approval of Subdivision and Townsite Plats as adopted on August 7, 1962.

By Almond Stutzman  
Chairman

Attest: Eva E. Larson  
County Clerk

69 9:00 January 8  
E  
Eva E. Larson  
Almond Stutzman  
122693 25

PLAT SHOWING  
**STOCKHILL SUBDIVISION**  
LOTS 67M, 67N, 67S, 67T.  
T.51 N., R.103 W.  
PARK COUNTY, WYOMING

LIVINGSTON ENGINEERING - CODY, WYOMING  
CONSULTING CIVIL ENGINEERS AND LAND SURVEYORS

My Commission Expires 12/1/72  
November 1968