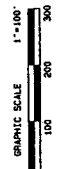
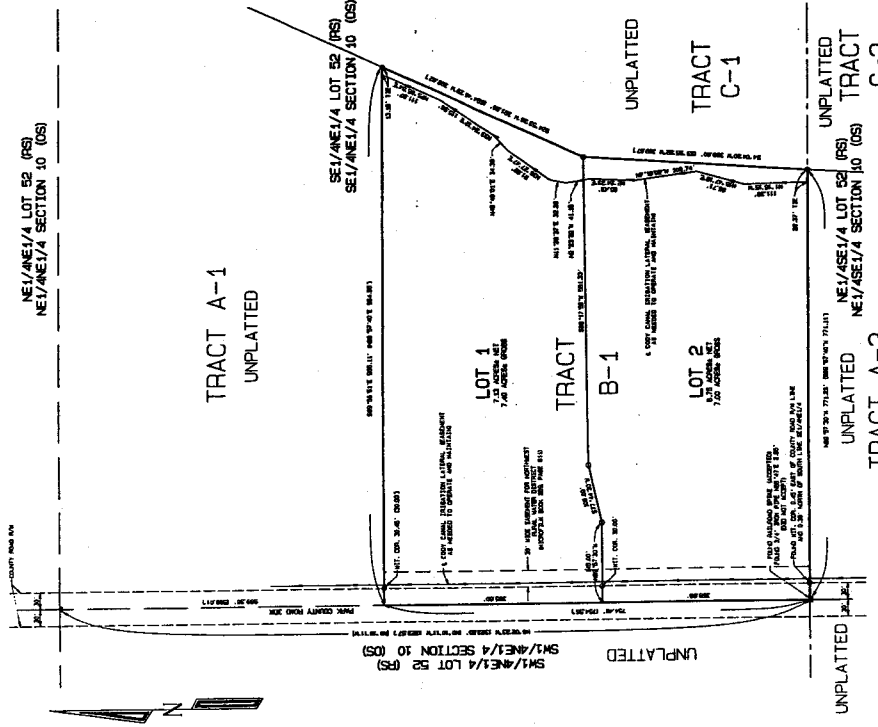


T. 52 N., R. 101 W.  
(RESURVEY)

NE1/4NE1/4 LOT 52 (RS)  
NE1/4NE1/4 SECTION 10 (OS)



NO PUBLIC SEWAGE DISPOSAL SYSTEM PROPOSED.  
NO PROPOSED PUBLIC DOMESTIC WATER SOURCE.  
THERE ARE NO ROADS PROPOSED AS A PART OF THIS SUBDIVISION.

**PLANNING CONDITIONS FOR STRAIT FAMILY TRUST SS-31**

1. THE PLANNING CONDITIONS SET FORTH HEREIN ARE TO BE CONSIDERED AS PART OF THE PLANNING CONDITIONS FOR THIS SUBDIVISION.
2. THE PLANNING CONDITIONS SET FORTH HEREIN ARE TO BE CONSIDERED AS PART OF THE PLANNING CONDITIONS FOR THIS SUBDIVISION.
3. THE PLANNING CONDITIONS SET FORTH HEREIN ARE TO BE CONSIDERED AS PART OF THE PLANNING CONDITIONS FOR THIS SUBDIVISION.
4. THE PLANNING CONDITIONS SET FORTH HEREIN ARE TO BE CONSIDERED AS PART OF THE PLANNING CONDITIONS FOR THIS SUBDIVISION.
5. THE PLANNING CONDITIONS SET FORTH HEREIN ARE TO BE CONSIDERED AS PART OF THE PLANNING CONDITIONS FOR THIS SUBDIVISION.
6. THE PLANNING CONDITIONS SET FORTH HEREIN ARE TO BE CONSIDERED AS PART OF THE PLANNING CONDITIONS FOR THIS SUBDIVISION.
7. THE PLANNING CONDITIONS SET FORTH HEREIN ARE TO BE CONSIDERED AS PART OF THE PLANNING CONDITIONS FOR THIS SUBDIVISION.
8. THE PLANNING CONDITIONS SET FORTH HEREIN ARE TO BE CONSIDERED AS PART OF THE PLANNING CONDITIONS FOR THIS SUBDIVISION.
9. THE PLANNING CONDITIONS SET FORTH HEREIN ARE TO BE CONSIDERED AS PART OF THE PLANNING CONDITIONS FOR THIS SUBDIVISION.
10. THE PLANNING CONDITIONS SET FORTH HEREIN ARE TO BE CONSIDERED AS PART OF THE PLANNING CONDITIONS FOR THIS SUBDIVISION.

**APPROVAL AND SUBDIVISION PERMIT**

THIS PLAT HAS BEEN APPROVED AND THE SUBDIVISION PERMIT GRANTED BY THE BOARD OF COUNTY COMMISSIONERS AND THE BOARD OF HEALTH AND SANITATION OF PARK COUNTY, WYOMING, ON THIS 20th DAY OF DECEMBER, 2003.

BY: *[Signature]*  
BOARD COUNTY CLERK

DATE: December 20, 2003

**RECORDER'S ACCEPTANCE**

THIS PLAT HAS BEEN ACCEPTED FOR FILING IN THE OFFICE OF THE PARK COUNTY CLERK AND RECORDS ON THIS 21st DAY OF DECEMBER, 2003 AND FILED FOR RECORD IN BOOK 31, PAGE 152.

BY: *[Signature]*  
PARK COUNTY CLERK

DATE: December 21, 2003

**PLANNING COMMISSION RECOMMENDATION**

THE PLANNING COMMISSION HAS REVIEWED THE PLAT AND RECOMMENDS APPROVAL OF THE PLAT AND SUBDIVISION PERMIT GRANTED BY THE BOARD OF COUNTY COMMISSIONERS AND THE BOARD OF HEALTH AND SANITATION OF PARK COUNTY, WYOMING.

BY: *[Signature]*  
PLANNING COMMISSION SECRETARY

DATE: December 20, 2003

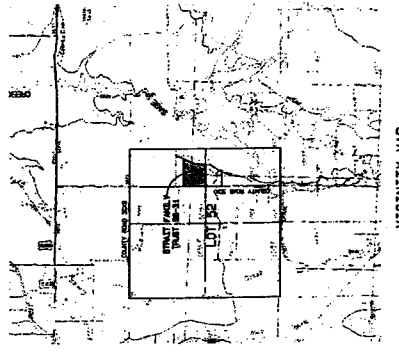
**BOARD OF COUNTY COMMISSIONERS APPROVAL AND SUBDIVISION PERMIT**

THIS PLAT IS HEREBY APPROVED AND THE SUBDIVISION PERMIT GRANTED BY THE BOARD OF COUNTY COMMISSIONERS AND THE BOARD OF HEALTH AND SANITATION OF PARK COUNTY, WYOMING, ON THIS 20th DAY OF DECEMBER, 2003.

BY: *[Signature]*  
BOARD COUNTY CLERK

DATE: December 20, 2003

T. 52 N., R. 101 W.  
(RESURVEY)



**VICINITY MAP**

SCALE: 1" = 800'

**CERTIFICATE OF DEDICATION**

THE LANDS OF THE PUBLIC DOMAIN, SUBJECT TO THE RIGHTS OF THE FEDERAL GOVERNMENT, ARE HEREBY DEDICATED TO THE PUBLIC DOMAIN OF THE STATE OF WYOMING, TO BE USED AS A PUBLIC ROAD, TO BE KNOWN AS THE STRAIT FAMILY TRUST ROAD, AND SHOWN HEREON.

BY: *[Signature]*  
COUNTY CLERK

DATE: December 21, 2003

**LEGEND**

- INDICATES NEARBY TOWN, ALTHOUGH NOT SHOWN.
- INDICATES NEARBY SECTION, ALTHOUGH NOT SHOWN.
- INDICATES NEARBY TOWNSHIP, ALTHOUGH NOT SHOWN.
- INDICATES NEARBY COUNTY, ALTHOUGH NOT SHOWN.
- INDICATES NEARBY STATE, ALTHOUGH NOT SHOWN.

**ESSENTIALS OF RECORDS**

1. THE PLAT IS FILED IN BOOK 31, PAGE 152.

**SURVEYOR'S CERTIFICATE**

I, the undersigned, being a duly qualified and licensed Surveyor of the State of Wyoming, do hereby certify that the above described plat and subdivision permit were prepared and filed in accordance with all applicable laws and regulations of the State of Wyoming.

BY: *[Signature]*  
SURVEYOR

DATE: December 20, 2003

STRAIT FAMILY TRUST SS-31  
PLAT SHOWING  
IN THE SE1/4NE1/4 OF LOT 52 (RESURVEY) BEING  
THE SE1/4NE1/4 OF SECTION 10 (ORIGINAL SURVEY),  
T. 52 N., R. 101 W., 6TH P.M., PARK COUNTY, WYOMING

WOLFE, BLOOM AND COMPANY  
REGISTERED PROFESSIONAL SURVEYORS  
301 W. 10TH STREET  
CODY, WYOMING 82414

7-12-07