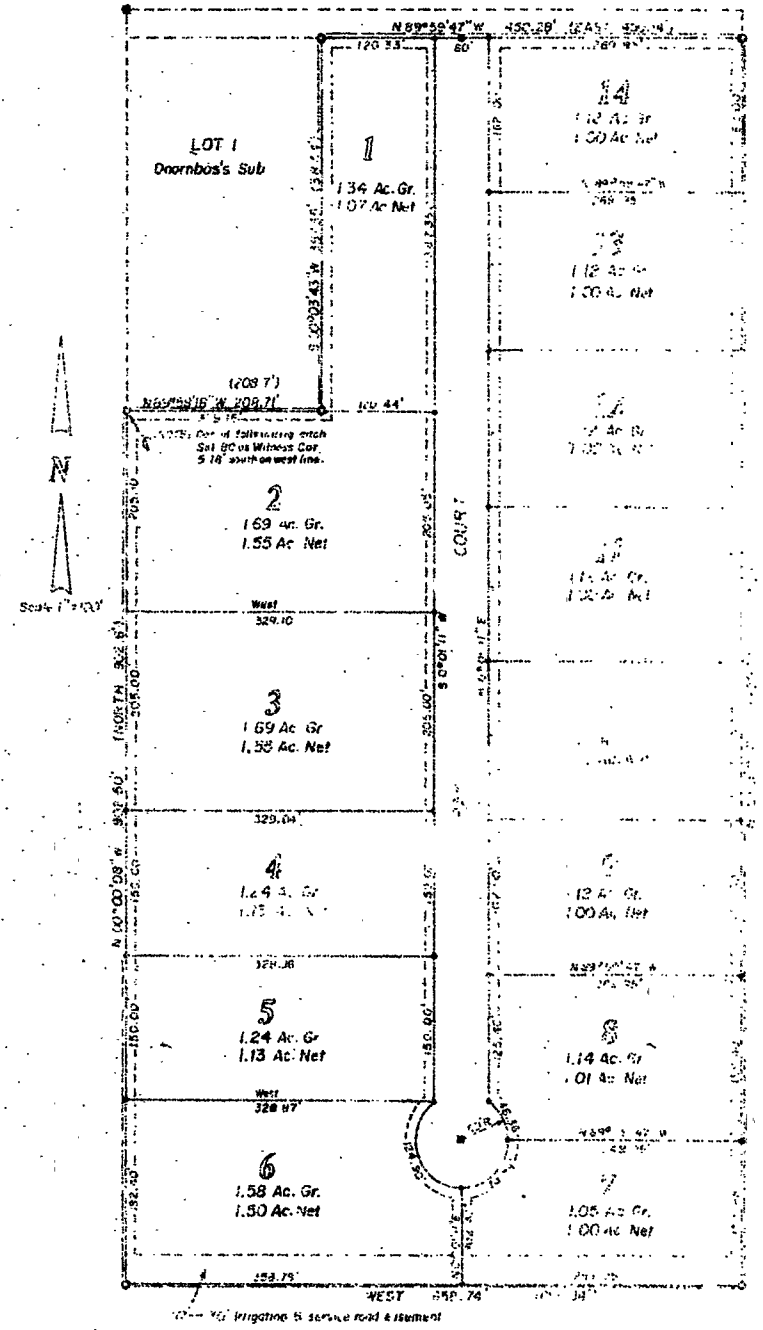


COUNTY ROAD L 9th (R.O.W. Fee waived)



LEGEND

- Standard Brass Cap and or plate
- Standard Brass Cap of this survey
- Steel (Imp set in concrete) (sub. boundary)
- Aluminum cap set on No. 10 iron, 18" long
- Subdivision Boundary
- Recorded Bearing and/or distance
- Survey of this survey
- North of L 9th
- Not to be used in metallic cap after road construction

DECLARATION OF DONOR

I, the undersigned, do hereby certify that the property described as Lot 2, Doornbos's Subdivision of Lot 5, T14N, R30W, S24E, Park County, Wyoming, was surveyed and plotted as shown hereon. The subdivision was made in accordance with the desires of the undersigned owners and pursuant to the provisions of the Wyoming Subdivision Act. We hereby dedicate and set apart the road and easements as shown hereon for the general public. We hereby waive and relinquish all rights of homestead.

Roger W. Gann
 Roger W. Gann
Rhoda K. Gann
 Rhoda K. Gann

Witness my hand and official seal this 24th day of August, 1982, at Park County, Wyoming.

The undersigned hereby certify as follows: We are the owners of the property described as Lot 1-4, Doornbos's Subdivision of Lot 5, T14N, R30W, S24E, Park County, Wyoming. We have caused said lands to be surveyed and plotted as shown hereon. The subdivision was made in accordance with the desires of the undersigned owners and pursuant to the provisions of the Wyoming Subdivision Act. We hereby dedicate and set apart the road and easements as shown hereon for the general public. We hereby waive and relinquish all rights of homestead.

Donald R. Lange
 Donald R. Lange
Sandra G. Lange
 Sandra G. Lange

Witness my hand and official seal this 24th day of August, 1982, at Park County, Wyoming.

Donald R. Lange
 Donald R. Lange
Sandra G. Lange
 Sandra G. Lange

Witness my hand and official seal this 24th day of August, 1982, at Park County, Wyoming.

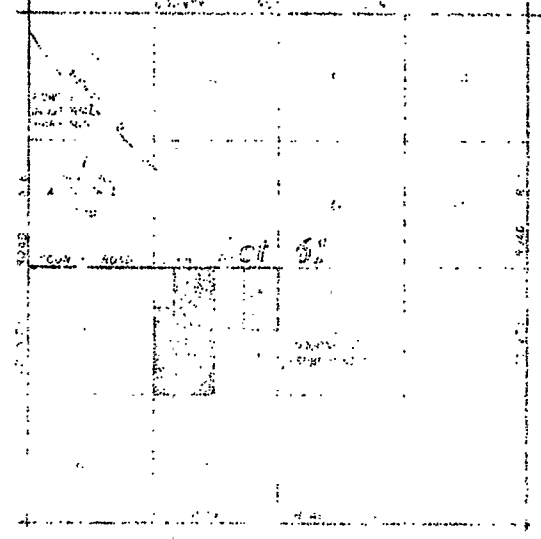
Donald R. Lange
 Donald R. Lange
Sandra G. Lange
 Sandra G. Lange

CERTIFICATE OF SURVEYOR

I, Richard E. Myrick, a professional engineer and land surveyor registered in Wyoming by certificate number 1001, do hereby certify that the subdivision shown on this map was surveyed and plotted as shown hereon. The subdivision was made in accordance with the desires of the undersigned owners and pursuant to the provisions of the Wyoming Subdivision Act. I am familiar with the Park County Subdivision Regulations and believe the subdivision shown hereon complies with the provisions of said regulations. Subdivision of sections, lots or tracts into aliquot parts was done as required. Certified and correct according to the provisions of the Wyoming Subdivision Act. The accuracy of the survey is to the nearest one-tenth of an inch on a scale of one inch equals one hundred feet.

Richard E. Myrick
 Richard E. Myrick

Witness my hand and official seal this 24th day of August, 1982, at Park County, Wyoming.



Approved by the County Clerk of Park County, Wyoming, this 24th day of August, 1982.

[Signature]
 County Clerk

The purchase of any lots with this plat shall be subject to the provisions of the Wyoming Subdivision Act, and the purchaser shall be deemed to have accepted the terms of the plat and to have agreed to comply with the provisions of the Wyoming Subdivision Act.

Sunny Vale Subdivision

NO PROPOSED PUBLIC SEWAGE DISPOSAL SYSTEM