

T. 54 N., R. 101 W.
(RESURVEY)

T. 54 N., R. 101 W.
(RESURVEY)

CERTIFICATE OF DEDICATION

WE, THE UNDERSIGNED OWNERS, HEREBY CERTIFY THAT WE ARE THE OWNERS AND PROPRIETORS OF THE LANDS COVERED BY HERETOFORE RECORDED AS DOCUMENT NO. 2003-2720 IN THE RECORDS OF THE CLERK AND RECORDER OF PARK COUNTY, STATE OF WYOMING DESCRIBED AS

PARCEL 1
LOTS 1 AND 2 OF THE '55-08' SUBDIVISION, ACCORDING TO THE PLAT RECORDED IN BOOK "G" OF PLATS, PAGE 78, ACCORDING TO THE RECORDS OF THE COUNTY CLERK AND RECORDER OF PARK COUNTY, STATE OF WYOMING.

PARCEL 2
TOWNSHIP 54 NORTH, RANGE 101 WEST, 6TH P.M., PARK COUNTY, WYOMING, ACCORDING TO THE RECORDS OF THE COUNTY CLERK AND RECORDER OF PARK COUNTY, STATE OF WYOMING:

THAT PART OF PARK UNIT "N", ACCORDING TO THE PARK UNIT PLAT, BEING DESCRIBED AS FOLLOWS:
SECTION 13; LOTS 6, 15, SW1/4SE1/4

EXCEPTING THEREFROM THAT PART OF LOT 6 OF SECTION 13 MORE PARTICULARLY DESCRIBED AS FOLLOWS:
BEGINNING AT THE SOUTHWEST CORNER OF LOT 6 WHICH IS MARKED BY A 1 1/2" INCH DIAMETER IRON PIPE; THENCE S 89°45'07"N., ALONG THE SOUTH LINE OF LOT 6, FOR 207.50 FEET TO A 1 1/2" INCH ALUMINUM CAP MONUMENT; THENCE N 16°28'15"E., FOR 816.20 FEET TO A 1 1/2" INCH ALUMINUM CAP MONUMENT; THENCE N 23°22'58"W., FOR 204.11 FEET TO A 1 1/2" INCH ALUMINUM CAP MONUMENT; THENCE S 61°15'14"E., FOR 100.00 FEET TO A 1 1/2" INCH ALUMINUM CAP MONUMENT; THENCE S 21°56'21"E., FOR 88.00 FEET TO A POINT ON THE NORTH LINE OF LOT 6. THIS POINT MARKED BY A 1 1/2" INCH ALUMINUM CAP MONUMENT; THENCE N 89°33'12"E., ALONG THE NORTH LINE OF LOT 6, FOR 300.00 FEET TO A POINT ON THE SOUTHWEST CORNER OF LOT 6, WHICH IS MARKED WITH A 1 1/2" INCH DIAMETER IRON PIPE; THENCE S 28°25'11"W., ALONG THE EAST LINE OF LOT 6, FOR 648.33 FEET, MORE OR LESS, TO THE POINT OF BEGINNING.

AND FURTHER EXCEPTING THAT PART OF LOT 15 OF SECTION 13 MORE PARTICULARLY DESCRIBED AS FOLLOWS:

BEGINNING AT THE NORTHWEST CORNER OF LOT 15 WHICH IS MARKED BY A 3/4" INCH DIAMETER IRON PIPE; THENCE S 89°25'11"W., ALONG THE EAST LINE OF LOT 15, FOR 277.70 FEET TO THE SOUTHWEST CORNER OF LOT 15, WHICH IS MARKED BY A 1 1/2" INCH ALUMINUM CAP MONUMENT; THENCE N 23°22'58"W., FOR 144.18 FEET TO A 1 1/2" INCH ALUMINUM CAP MONUMENT; THENCE S 61°15'14"E., FOR 100.00 FEET TO A POINT ON THE NORTH LINE OF LOT 15. THIS POINT MARKED BY A 1 1/2" INCH ALUMINUM CAP MONUMENT; THENCE N 89°33'12"E., ALONG THE NORTH LINE OF LOT 15, FOR 300.00 FEET TO A POINT ON THE SOUTH LINE OF LOT 15. THIS POINT MARKED BY A 1 1/2" INCH ALUMINUM CAP MONUMENT; THENCE N 89°33'12"E., ALONG THE NORTH LINE OF LOT 15, FOR 648.33 FEET, MORE OR LESS, TO THE POINT OF BEGINNING.

AND FURTHER EXCEPTING LOTS 1 AND 2 OF THE '88-08' SUBDIVISION, ACCORDING TO THE PLAT RECORDED IN BOOK "58" OF PLATS, PAGE 78, ACCORDING TO THE RECORDS OF THE COUNTY CLERK AND RECORDER OF PARK COUNTY, STATE OF WYOMING.

SAID PARCEL 2 FURTHER SHOWN AS REMAINDER PARCEL ON '88-08' SUBDIVISION PLAT.

THAT WE HAVE CAUSED SAID SUBDIVISION PLAT TO BE AMENDED AS SHOWN HEREON. SAID LOT 1 AS AMENDED IS SHOWN AS LOT 101 AND SAID LOT 2 AS AMENDED IS SHOWN AS LOT 102. THE AMENDMENT OF SAID SUBDIVISION NO. 8 HAS BEEN MADE THAT THE AMENDMENT TO SAID SUBDIVISION NO. 8 IS WITH THE CONSENT OF THE OWNERS AND PROPRIETORS AND BY THESE PRESENTS DO HEREBY DEDICATE TO THE COUNTY OF PARK, STATE OF WYOMING FOR THE USE BY THE PUBLIC, THE PORTIONS OF LAND LABELED AS SHOWN HEREON FOR USE AS SANITARY AND STREET DRAINAGE. THE PORTIONS OF LAND LABELED AS UTILITY EASEMENTS TO THE COUNTY OF PARK FOR USE BY UTILITY COMPANIES IN THE INSTALLATION OF UTILITY LINES AND FACILITIES AND HEREBY DEDICATE THOSE PORTIONS OF LAND LABELED AS DRAINAGE EASEMENTS TO THE COUNTY OF LOT 101 AND 102 FOR INSTALLATION OF SANITARY AND STREET DRAINAGE FACILITIES.

IN WITNESS WHEREOF, WE HAVE HEREON SET OUR HANDS AND AFFIXED OUR SIGNS AND SEALS OF OFFICE, THIS 17th DAY OF JUNE, 2003.

BY COMMISSIONER: *[Signature]*
STATE OF WYOMING
COUNTY OF PARK

THE FOREGOING CERTIFICATE OF DEDICATION WAS ACKNOWLEDGED BEFORE ME THIS 17th DAY OF JUNE, 2003 BY STANLEY S. PETERS AND LINDA CLIFFRON PETERS

WITNESSED BY ME AND OFFICIAL SEAL:
[Signature]
NOTARY PUBLIC
BY COMMISSIONER: *[Signature]*

BY COMMISSIONER: *[Signature]*

BY COMMISSIONER: *[Signature]*

BY COMMISSIONER: *[Signature]*

BY COMMISSIONER: *[Signature]*

BY COMMISSIONER: *[Signature]*

BY COMMISSIONER: *[Signature]*

BY COMMISSIONER: *[Signature]*

BY COMMISSIONER: *[Signature]*

BY COMMISSIONER: *[Signature]*

BY COMMISSIONER: *[Signature]*

BY COMMISSIONER: *[Signature]*

BY COMMISSIONER: *[Signature]*

BY COMMISSIONER: *[Signature]*

BY COMMISSIONER: *[Signature]*

BY COMMISSIONER: *[Signature]*

BY COMMISSIONER: *[Signature]*

BY COMMISSIONER: *[Signature]*

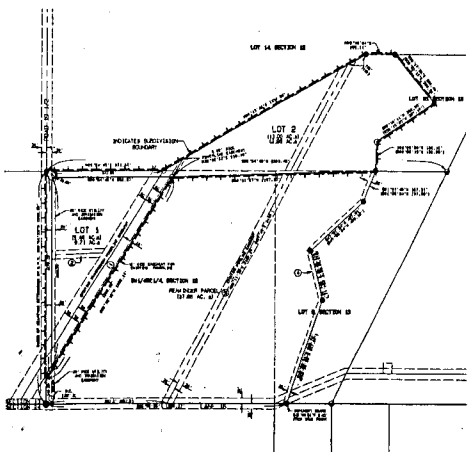
BY COMMISSIONER: *[Signature]*

BY COMMISSIONER: *[Signature]*

BY COMMISSIONER: *[Signature]*

BY COMMISSIONER: *[Signature]*

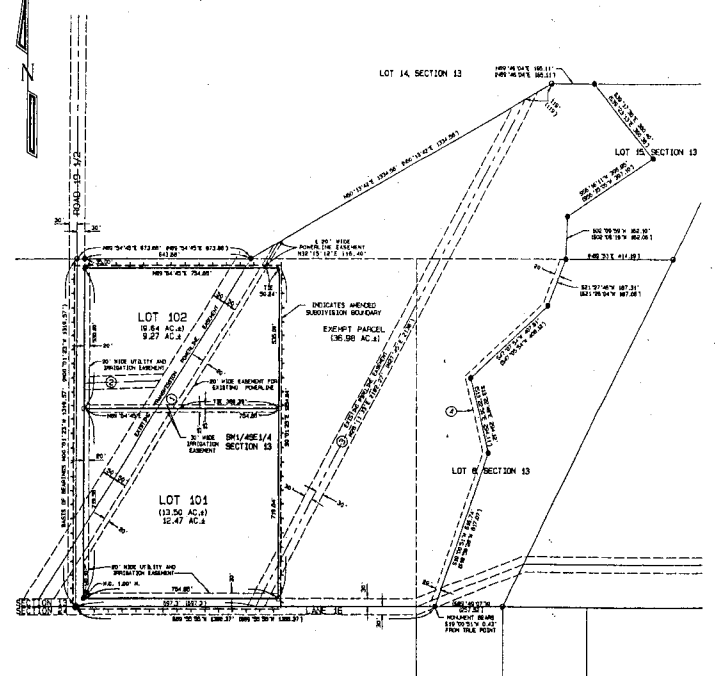
BY COMMISSIONER: *[Signature]*



SIMPLE SUBDIVISION NO. 8
RECORDED IN PLAT CABINET "D" ON PAGE 78
UNDER RECEIPTION NUMBER 2003-2221
GRAPHIC SCALE 1"=300'
0 300 600 900

CLERK AND RECORDER'S ACCEPTANCE
THIS AMENDED PLAT WAS ACCEPTED IN THE OFFICE OF THE CLERK AND RECORDER, PARK COUNTY, WYOMING AT 3:03 O'CLOCK P.M. ON THIS 17th DAY OF JUNE, 2003, FILED FOR RECORDING IN BOOK DR PLAT CABINET 6 AT PAGE 134 AND RECORDED AS COMPUTER RECORD DOCUMENT NUMBER 2003-2221.
WYOMING COUNTY CLERK AND RECORDER
[Signature]

BOARD OF COUNTY COMMISSIONERS APPROVAL AND SUBDIVISION PERMIT
THIS AMENDED PLAT IS HEREBY APPROVED AND THE SUBDIVISION PERMIT GRANTED BY THE BOARD OF COUNTY COMMISSIONERS OF PARK COUNTY, WYOMING, THIS 17th DAY OF JUNE, 2003.
[Signature]
ATTEST:
[Signature]
PARK COUNTY CLERK
DATE: June 17, 2003



AMENDED PLAT SIMPLE SUBDIVISION NO. 8
ENCOMPASSING 23.14 ACRES, TOTAL
GRAPHIC SCALE 1"=200'
0 200 400 800

SURVEYOR'S CERTIFICATE
I, PAUL A. BLOOM, BEING A REGISTERED LAND SURVEYOR IN THE STATE OF WYOMING, DO HEREBY CERTIFY THAT THIS AMENDED PLAT AND SURVEY OF SIMPLE SUBDIVISION NO. 8 WAS MADE BY ME AND UNDER MY SUPERVISION AND THAT BOTH ARE ACCURATE TO THE BEST OF MY KNOWLEDGE AND IN COMPLIANCE WITH ALL STATE AND COUNTY STATUTORY PROVISIONS AND REGULATIONS.
DATED THIS 17th DAY OF JUNE, 2003
[Signature]
PAUL A. BLOOM
REGISTERED LAND SURVEYOR
WYOMING REGISTRATION NO. 2332 LB



-PLAT SHOWING-
AMENDED PLAT OF SIMPLE SUBDIVISION NO. 8
IN LOT 6, LOT 15, AND THE SW1/4SE1/4 OF SECTION 13, T. 54 N., R. 101 W. OF THE 6th P.M. PARK COUNTY, WYOMING, RESURVEY

HERN M. BLOOM AND COMPANY