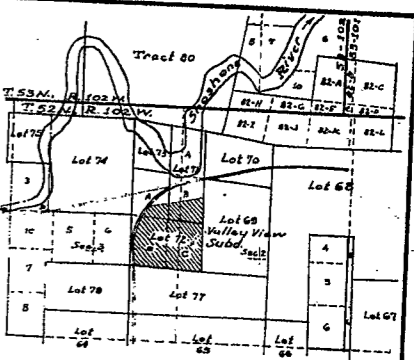


Legend:-

- Boundaries of Valley View Subdivision, shown thus: [Symbol]
- Stone Corners found in place, shown thus: [Symbol]
- Bress Cap Corners found in place, shown thus: [Symbol]
- Bress Cap Corners set by this survey, shown thus: [Symbol]
- 1 1/4" Iron Pipe Corners set by this survey, and driven to ground level, shown thus: [Symbol]
- Bearings and Distances of Record, shown thus: [Symbol]
- Bearings and Distances based on monuments found in place or set by this survey, shown thus: [Symbol]
- Highway Right of Way Markers found in place, shown thus: [Symbol]



Certificate of Surveyor

STATE OF WYOMING } ss.
County of Park }

I, William H. Greaver, a Land Surveyor, registered in Wyoming by registration No. 1335, L.S., hereby certify as follows: that this Amended Plat of the Valley View Subdivision, in Township 52 North, Range 102 West of the 6th P.M., in Park County, Wyoming, was made from the notes of an actual survey, made by me during the period from the 25th of May, 1973, to the 26th of August, 1973, in order to correct certain technical deficiencies in the original plat of the Valley View Subdivision, and that this plat accurately reflects the results of a survey that certain obliterated land corners were marked as shown by a 1 1/4" iron pipe. The land surveyed is correctly described in the annexed plat and the same is correctly shown on this plat, which is drawn to a scale of 1 inch to 100 feet, and the subdivision thereof is also shown on this plat, which is drawn to a scale of 1 inch to 100 feet. Dimensions are given in feet and decimals of feet. Bearings are given in degrees, minutes, and seconds of arc, and are referred to the true meridian which was determined by astronomical observations at the corner of Lot 72, Resurvey, and the West boundary of the Amended Plat of Valley View Subdivision, No. 2, Certified Land Corner Reservation Certificate, made by me during the period from the 25th of May, 1973, to the 26th of August, 1973, in accordance with the requirements of the Wyoming Statutes, and the monuments are as described herein. All elements of this survey were actually set, and the monuments are as described herein. All elements of this survey were actually set, and the monuments are as described herein. All elements of this survey were actually set, and the monuments are as described herein.

Witness my hand and official seal, this 29th day of August, 1973.

My commission expires: 7-17-82

William H. Greaver
Surveyor

Certificate of Dedication

STATE OF WYOMING } ss.
County of Park }

This certifies that Owl, Inc., a Wyoming Corporation, and persons whose signatures are affixed to this Certificate of Dedication and to the Certificate of Joinder, which accompany this plat, are the owners of a parcel of land shown on this plat, as the Amended Plat of the Valley View Subdivision, in Township 52 North, Range 102 West of the 6th P.M., in Park County, Wyoming, and that said parcel of land is hereby dedicated to the use of the general public, and that the same shall be known as the Rio Vista Avenue. The dedication is made for the purpose of creating a public highway and the same shall be known as the Rio Vista Avenue. The dedication is made for the purpose of creating a public highway and the same shall be known as the Rio Vista Avenue. The dedication is made for the purpose of creating a public highway and the same shall be known as the Rio Vista Avenue.

Witness my hand and official seal, this 29th day of August, 1973.

Vern Wagner, President, Owl, Inc.
M. Eleanor Atkinson, Secretary, Owl, Inc.

My commission expires: 7-17-82

Madeline J. Outten, Notary Public

STATE OF WYOMING } ss.
County of Park }

The foregoing certificate was acknowledged before me by Vern Wagner, and M. Eleanor Atkinson, this 29th day of August, 1973.

My commission expires: 7-17-82

Madeline J. Outten, Notary Public

Subdivision Permit

A subdivision permit is hereby granted for the subdivision shown hereon, this 29th day of August, 1973, by the Commissioners of Park County, Wyoming, and this plat is hereby approved.

Notary Public

Approval:

Approved this 29th day of August, 1973, by the City Council of Cody, Wyoming.

Hon. George Frank, Mayor

Attest: [Signature]

Amended Plat of the Valley View Subdivision, being parts of Lot 71 B, Lots 72-A, B, C, and a small part of Lot 77, Resurvey, in T. 52 N., R. 102 W., of the 6th P.M., in Park County, Wyoming.

William H. Greaver, Surveyor
Cody, Wyoming.

Scale: 1 Inch = 100 feet.