

T.52 N. - R.104 W. & R.105 W.

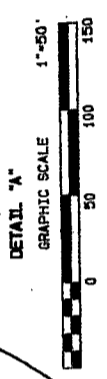
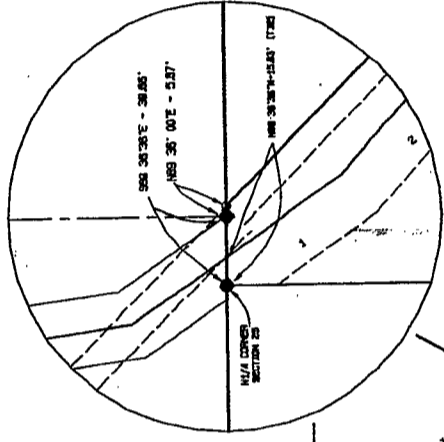
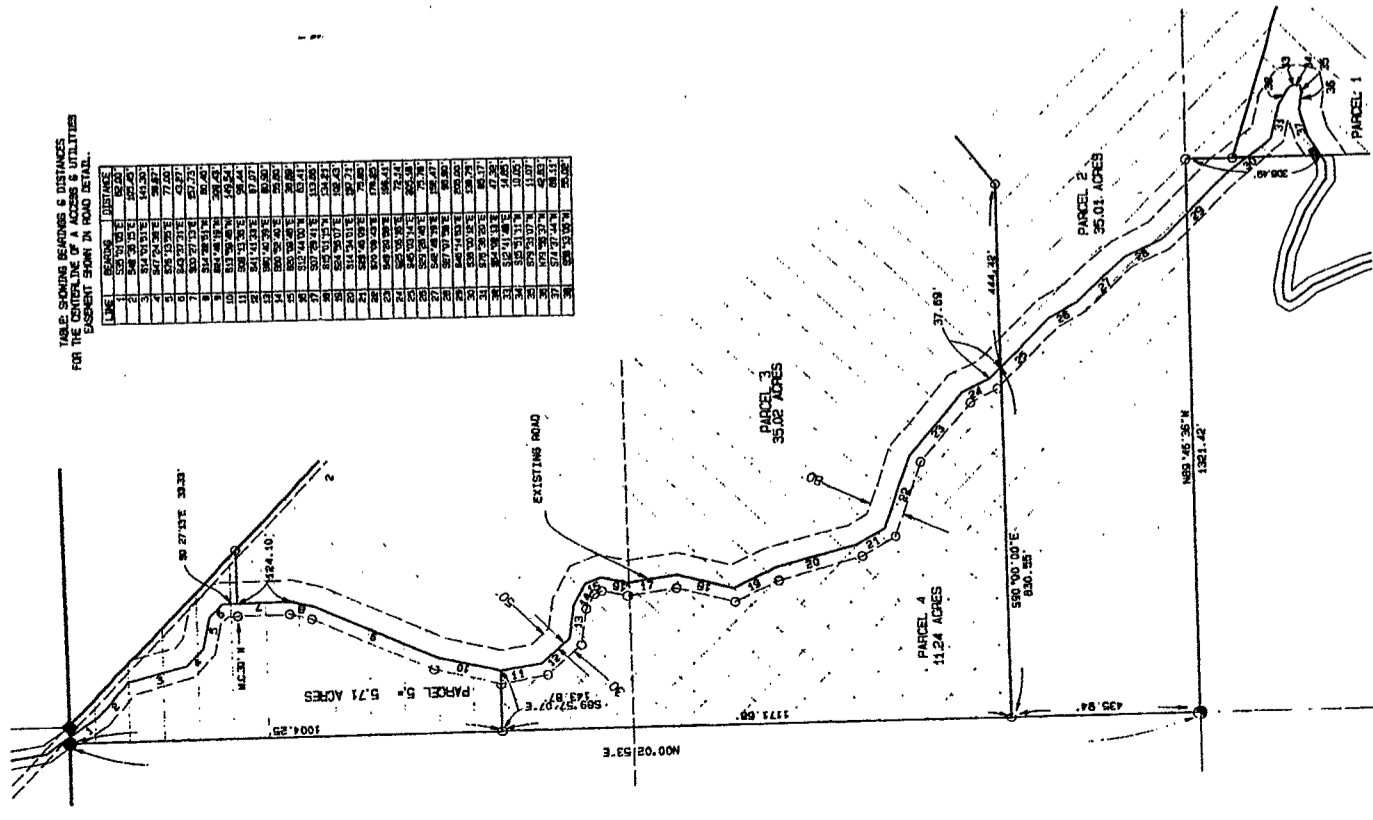
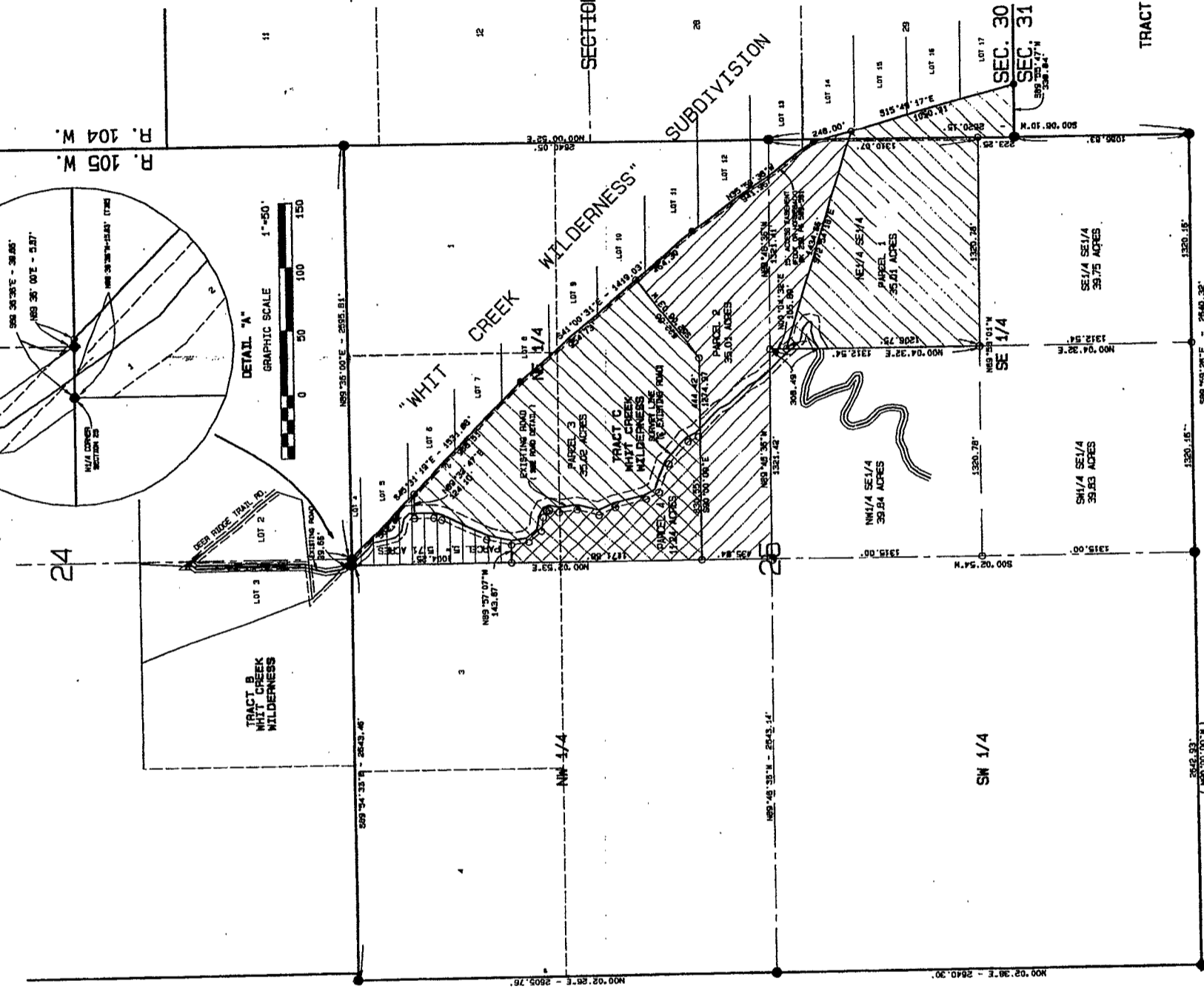
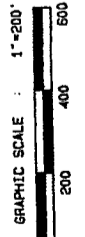


TABLE SHOWING BEARINGS & DISTANCES FOR THE CENTERLINE OF A ACCESS & UTILITIES EASEMENT SHOWN IN ROAD DETAIL.

LINE	BEARING	DISTANCE
1	S89°57'07"W	143.87'
2	S89°57'07"W	143.87'
3	S74°51'51"E	141.24'
4	S67°52'38"E	99.87'
5	S67°52'38"E	99.87'
6	S49°52'31"E	42.97'
7	S49°52'31"E	42.97'
8	S30°52'31"E	87.73'
9	S30°52'31"E	87.73'
10	S13°52'31"E	149.24'
11	S13°52'31"E	149.24'
12	S06°52'31"E	177.45'
13	S06°52'31"E	177.45'
14	S00°52'31"E	205.66'
15	S00°52'31"E	205.66'
16	S00°52'31"E	205.66'
17	S00°52'31"E	205.66'
18	S00°52'31"E	205.66'
19	S00°52'31"E	205.66'
20	S00°52'31"E	205.66'
21	S00°52'31"E	205.66'
22	S00°52'31"E	205.66'
23	S00°52'31"E	205.66'
24	S00°52'31"E	205.66'
25	S00°52'31"E	205.66'
26	S00°52'31"E	205.66'
27	S00°52'31"E	205.66'
28	S00°52'31"E	205.66'
29	S00°52'31"E	205.66'
30	S00°52'31"E	205.66'
31	S00°52'31"E	205.66'
32	S00°52'31"E	205.66'
33	S00°52'31"E	205.66'
34	S00°52'31"E	205.66'
35	S00°52'31"E	205.66'
36	S00°52'31"E	205.66'
37	S00°52'31"E	205.66'
38	S00°52'31"E	205.66'
39	S00°52'31"E	205.66'
40	S00°52'31"E	205.66'



ACCESS AND UTILITY DETAIL. SHOWING ACCESS & UTILITIES EASEMENT. EASEMENT IS ALSO THE COMMON BOUNDARIES BETWEEN PARCELS 3 & PARCELS 4 & 5.



- LEGEND**
- INDICATES REBAR WITH 2" ALUM. CAP NET
 - INDICATES REBAR WITH ALUM. CAP FOUND
 - INDICATES BRASS CAP FOUND
 - INDICATES 2 1/2" JUNK PIPE FOUND
 - INDICATES STONE FOUND
 - INDICATES 8 1/2" ALUM. PIPE WITH 3" ALUM. CAP NET
 - BASES OF BEARINGS SHOWN THIS ()

State of Wyoming
County of Park
I, PHIL A. BLOUGH, Surveyor
No. 1997-5825

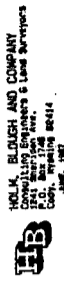
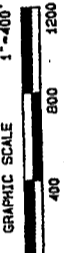
CERTIFICATE OF SURVEYOR

STATE OF WYOMING
COUNTY OF PARK
I, PHIL A. BLOUGH OF COOT, WYOMING DO HEREBY CERTIFY THAT THIS PLAT WAS PREPARED FROM FIELD NOTES TAKEN DURING THE COURSE OF A SURVEY MADE BY ME OR UNDER MY CLOSE PERSONAL SUPERVISION AND THAT THE MONUMENTS FOUND ON SET ARE AS SHOWN.
WYOMING L.S. REGISTRATION NO. 2338
PHIL A. BLOUGH



PHIL CAMPBELL
WAPITI, WYOMING
PLAT SHOWING
RECORD OF SURVEY

IN
TRACT C OF THE "WHIT CREEK WILDERNESS" SUBDIVISION
IN
SECTION 25, T.52 N., R.105 W.
AND
SECTION 30, T.52 N., R.104 W.
PARK COUNTY, WYOMING



PHIL BLOUGH AND COMPANY
CONSULTING ENGINEERS & LAND SURVEYORS
100 N. 17th St., Suite 204
Casper, WY 82401
PHONE: 338-2444
FAX: 338-2446