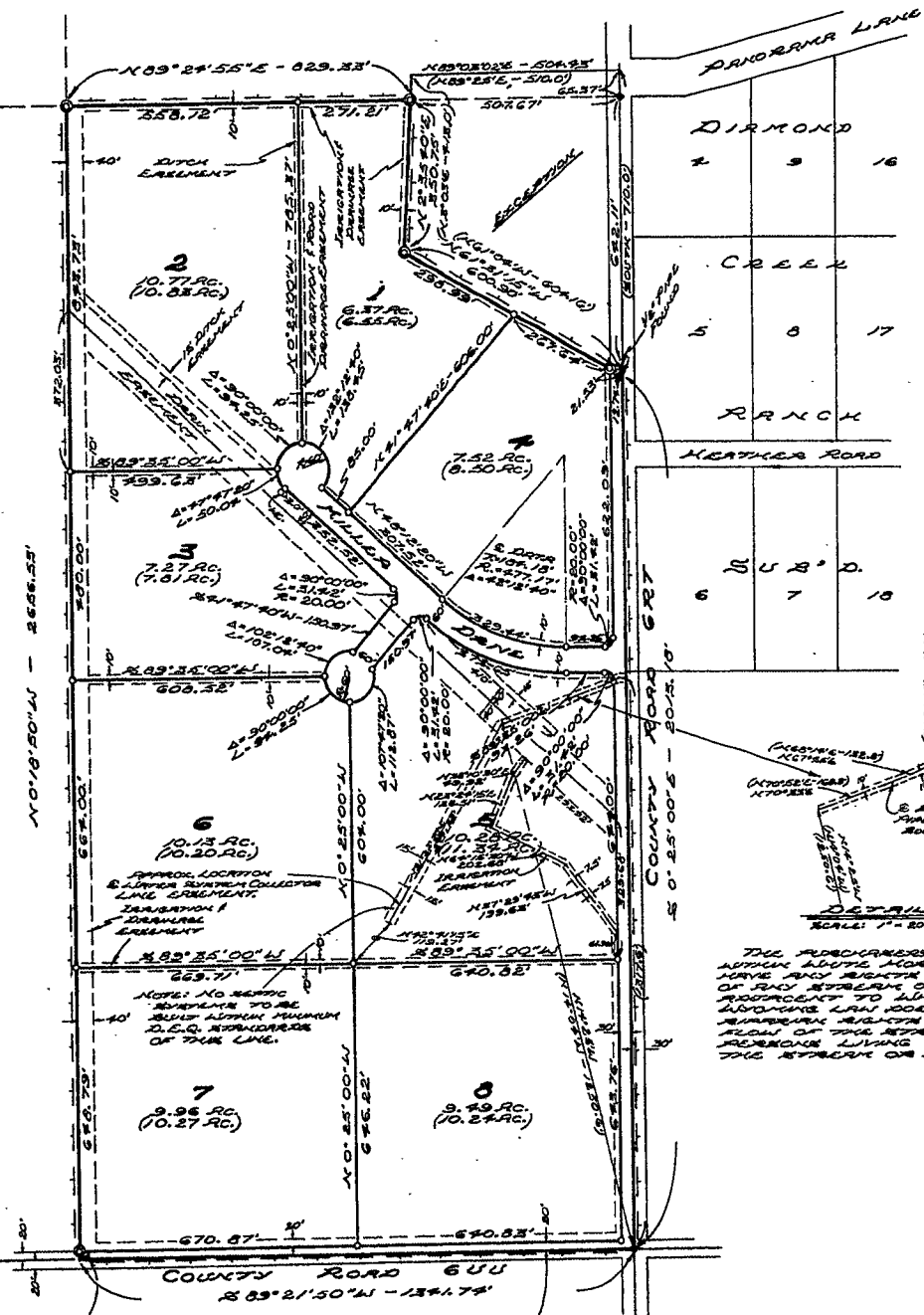


T. 52 N., R. 103 W.



1" LINE FOUND 5/11/88 ON EAST POINT OF LOT 1 OF THIS SUB'D.

LEGEND

- TOTAL NUMBER OF LOTS IN THIS SUB'D. 8
TOTAL NUMBER OF ACRES IN THIS SUB'D. 75.74
DRAINAGE CANALS FOUND
RAILROAD TRACK FOUND
1/2" DIA. REBAR FOUND
3/8" x 20" REBAR WALLUM. CAN. NET
NET LOT ACREAGE 72.7 AC
GROSS LOT ACREAGE TO E. OF STREET (7.81 AC.)
DIMENSIONS OF RECORD (N89°25'E-510.0)

SCALE: 1" = 200'

PLANNING AND ZONING COMMISSION CERTIFICATE

THIS PLAT IS RECOMMENDED FOR APPROVAL BY THE BOARD OF COUNTY COMMISSIONERS, PARK COUNTY, WYOMING, ON THIS 16th DAY OF SEPTEMBER, 1986 P.M.

COUNTY CLERK'S CERTIFICATE

THIS PLAT WAS FILED FOR THE PUBLIC RECORD IN THE OFFICE OF THE CLERK, PARK COUNTY, WYOMING, AT 11:00 O'CLOCK A.M. ON THE 16th DAY OF SEPTEMBER, 1986 P.M. AND IS DEPOSITED IN BOOK F, PAGE NUMBER 34.

CERTIFICATE OF DEDICATION

THE UNDERSIGNED, DO HEREBY CERTIFY THAT WE ARE THE OWNERS OF THE REAL PROPERTY DESCRIBED AS FOLLOWS: ALL OF LOT 37-I AND 37-P IN T. 52 N., R. 103 W. OF THE 6TH P.M. PARK COUNTY, WYOMING...

EXECUTED THIS 25th DAY OF SEPTEMBER, 1986 P.M.

Charles Miller, Jeanne J. Miller (Signatures)

STATE OF WYOMING } ss
COUNTY OF PARK } ss
THE FOREGOING DEDICATION WAS ACKNOWLEDGED BEFORE ME BY CHARLES MILLER AND JEANNE J. MILLER, HUSBAND AND WIFE, THIS 25th DAY OF SEPTEMBER, 1986 P.M.

WITNESS MY HAND AND OFFICIAL SEAL.
Notary Public (Signature)

MY COMMISSION EXPIRES: Sept. 26, 1988

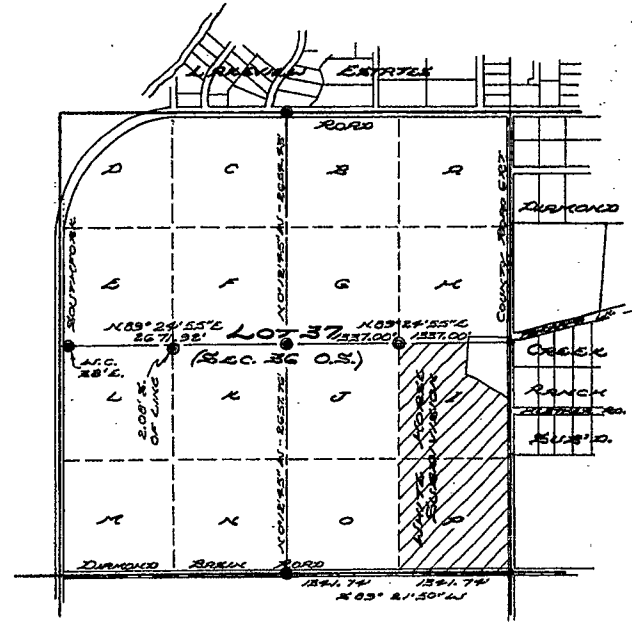
COUNTY COMMISSIONERS CERTIFICATE AND SUBDIVISION PERMIT

THIS PLAT IS HEREBY APPROVED AND SUBDIVISION PERMIT ISSUED BY THE BOARD OF COUNTY COMMISSIONERS OF PARK COUNTY, WYOMING, THIS 30th DAY OF SEPTEMBER, 1986 P.M., FOR THE REASON AND RECORDS WITH THE CLERK OF PARK COUNTY, WYOMING, AND FOR THE CONFORMANCE TO THE COUNTY OF PARK THE PUBLIC DEDICATION...

DATED THIS 30th DAY OF SEPTEMBER, 1986 P.M.
Notary Public (Signature)

ADDRESS MY HAND AND OFFICIAL SEAL OF THE COUNTY OF PARK THIS 30th DAY OF SEPTEMBER, 1986 P.M.

ATTEST: Marie Fontaine, Park County Clerk



VICINITY MAP SCALE: 1" = 1000'

CERTIFICATE OF SURVEYOR

I, PAUL R. BLOUGH, A LEAD SURVEYOR, REGISTERED IN THE STATE OF WYOMING BY REGISTRATION NUMBER 2338 L.S. HEREBY CERTIFY THAT I HAVE SURVEYED THIS PLAT JULY 16, 1986 AND JULY 31, 1986 THE WHITE HORSE SUBDIVISION...

IN WITNESS WHEREOF I HAVE SET MY HAND AND SEAL THIS 30th DAY OF July, 1986, P.M.

Paul R. Blough (Signature)

STATE OF WYOMING } ss
COUNTY OF PARK } ss

THE FOREGOING CERTIFICATE WAS ACKNOWLEDGED BEFORE ME BY PAUL R. BLOUGH THIS 30th DAY OF July, 1986, P.M.

WITNESS MY HAND AND OFFICIAL SEAL.
Notary Public (Signature)

MY COMMISSION EXPIRES: September 26, 1988

PLAT SHOWING WHITE HORSE SUBDIVISION BEING PART OF LOT 37-I AND ALL OF LOT 37-P, T. 52 N., R. 103 W., OF THE 6TH P.M. RESERVE PARK COUNTY, WYOMING. HOLM, BLOUGH & CO. CONSULTING ENGINEERS JULY, 1986

NO PUBLIC OR CENTRAL SEWER DISPOSAL SYSTEM PROPOSED